

Product Datasheet

Complement C3c Antibody (013E-498.2.3 (10-02A)) - BSA Free NB100-64339

Unit Size: 0.05 mg

Store at 4C short term. Aliquot and store at -20C long term. Avoid freeze-thaw cycles.

www.novusbio.com



technical@novusbio.com

Reviews: 1 Publications: 1

Protocols, Publications, Related Products, Reviews, Research Tools and Images at:
www.novusbio.com/NB100-64339

Updated 2/21/2025 v.20.1

Earn rewards for product
reviews and publications.

Submit a publication at www.novusbio.com/publications

Submit a review at www.novusbio.com/reviews/destination/NB100-64339



NB100-64339

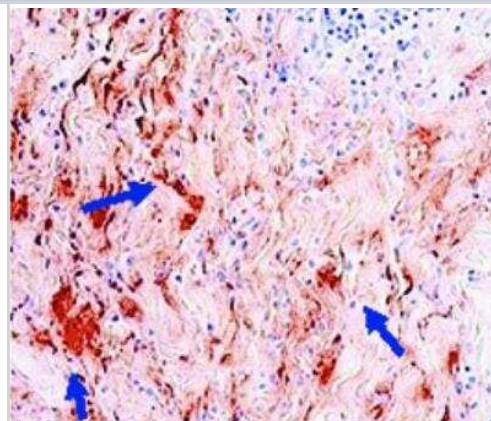
Complement C3c Antibody (013E-498.2.3 (10-02A)) - BSA Free

Product Information	
Unit Size	0.05 mg
Concentration	1.0 mg/ml
Storage	Store at 4C short term. Aliquot and store at -20C long term. Avoid freeze-thaw cycles.
Clonality	Monoclonal
Clone	013E-498.2.3 (10-02A)
Preservative	0.1% Sodium Azide
Isotype	IgG1
Purity	Protein A purified
Buffer	Borate buffered saline (pH 8.4)
Product Description	
Host	Mouse
Gene ID	718
Gene Symbol	C3
Species	Human
Specificity/Sensitivity	NB100-64339 recognizes 135 kDa complement component 3c (C3c), present in blood serum. C3c is generated over the course of complement activation, where convertase C4b2a (classical pathway) and convertase C3bBb (alternative pathway) cleave C3 to C3b and C3a. C3b is further degraded into iC3b and C3dg/C3d. iC3b is then slowly cleaved (possibly by factor I) to form C3c (beta chain + alpha' chain fragment 1 + alpha' chain fragment 2), C3dg and C3f. C3 is crucial in the induction of tolerance generated when an antigen is introduced into immunoprivileged sites and this is exploited by pathogens and cancer cells to evade the immune system by inhibiting complement activation.
Immunogen	Human C3 from normal serum, highly purified by chromatography
Product Application Details	
Applications	Western Blot, ELISA, Flow Cytometry, Immunohistochemistry, Immunohistochemistry-Frozen
Recommended Dilutions	Western Blot 1:100-1:2000, Flow Cytometry 1:10-1:1000, ELISA 1:100-1:2000, Immunohistochemistry 1:10-1:500, Immunohistochemistry-Frozen 1:10-1:500
Application Notes	In Western Blot binds both C3c and C3 and so is not suitable for all ELISA applications.



Images

Immunohistochemistry-Frozen: Complement C3c Antibody (10-02A)
[NB100-64339] - Human dermis stained with Complement C3c Antibody.
IHC-Fr image submitted by a verified customer review.



Publications

Janssen BJ, Huizinga EG, Raaijmakers HC et al. Structures of complement component C3 provide insights into the function and evolution of immunity. *Nature*. 2005-09-01 [PMID: 16177781]



Novus Biologicals USA

10730 E. Briarwood Avenue
Centennial, CO 80112
USA
Phone: 303.730.1950
Toll Free: 1.888.506.6887
Fax: 303.730.1966
nb-customerservice@bio-techne.com

Bio-Techne Canada

21 Canmotor Ave
Toronto, ON M8Z 4E6
Canada
Phone: 905.827.6400
Toll Free: 855.668.8722
Fax: 905.827.6402
canada.inquires@bio-techne.com

Bio-Techne Ltd

19 Barton Lane
Abingdon Science Park
Abingdon, OX14 3NB, United Kingdom
Phone: (44) (0) 1235 529449
Free Phone: 0800 37 34 15
Fax: (44) (0) 1235 533420
info.EMEA@bio-techne.com

General Contact Information

www.novusbio.com
Technical Support: nb-technical@bio-techne.com
Orders: nb-customerservice@bio-techne.com
General: novus@novusbio.com

Products Related to NB100-64339

HAF007	Goat anti-Mouse IgG Secondary Antibody [HRP]
NB720-B	Rabbit anti-Mouse IgG (H+L) Secondary Antibody [Biotin]
NBP1-97005-0.5mg	Mouse IgG1 Isotype Control (MG1)
210-TA-005	TNF-alpha [Unconjugated]

Limitations

This product is for research use only and is not approved for use in humans or in clinical diagnosis. Primary Antibodies are guaranteed for 1 year from date of receipt.

For more information on our 100% guarantee, please visit www.novusbio.com/guarantee

Earn gift cards/discounts by submitting a review: www.novusbio.com/reviews/submit/NB100-64339

Earn gift cards/discounts by submitting a publication using this product:
www.novusbio.com/publications

