

Product Datasheet

CD21 Antibody (LB21) [FITC]

NB100-63575

Unit Size: 0.1 mg

Store at 4C short term. Aliquot and store at -20C long term. Avoid freeze-thaw cycles.

www.novusbio.com



technical@novusbio.com

Protocols, Publications, Related Products, Reviews, Research Tools and Images at:
www.novusbio.com/NB100-63575

Updated 3/4/2021 v.20.1

Earn rewards for product
reviews and publications.

Submit a publication at www.novusbio.com/publications

Submit a review at www.novusbio.com/reviews/destination/NB100-63575



NB100-63575

CD21 Antibody (LB21) [FITC]

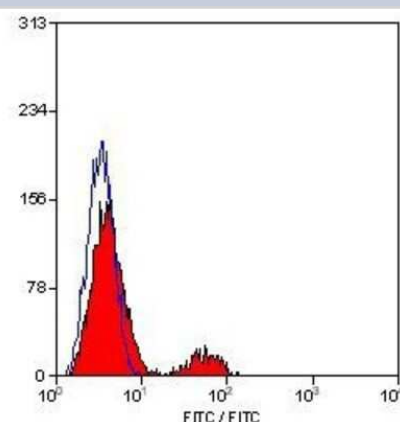
Product Information	
Unit Size	0.1 mg
Concentration	0.1 mg/ml
Storage	Store at 4C short term. Aliquot and store at -20C long term. Avoid freeze-thaw cycles.
Clonality	Monoclonal
Clone	LB21
Preservative	0.09% Sodium Azide
Isotype	IgG1
Conjugate	FITC
Purity	Protein A or G purified
Buffer	PBS (pH 7.4) and 1.0% BSA

Product Description	
Host	Mouse
Gene ID	1380
Gene Symbol	CR2
Species	Human, Bovine, Feline, Goat, Mustelid, Sheep
Reactivity Notes	Reacts with Human. Cross reacts with Sheep, Mink, Bovine, Goat and Cat.
Marker	Histiocytic Marker
Specificity/Sensitivity	NB100-65323 is a 14kD cell surface glycoprotein expressed by mature B cells and by follicular dendritic cells. The molecule acts as a receptor for complement components C3d, C3dg and iC3b, as well as for Epstein Barr Virus. It forms part of a large signal transduction complex in association with CD19.
Immunogen	Human IM9 cell line.

Product Application Details	
Applications	Flow Cytometry
Recommended Dilutions	Flow Cytometry 1:10-1:1000
Application Notes	The epitope recognised by this antibody is reported to be sensitive to formaldehyde fixation and tissue processing. The use of acetone fixation for frozen sections is recommended.

Images

Flow Cytometry: CD21 Antibody (LB21) [FITC] [NB100-63575] - Staining of human peripheral blood lymphocytes with MOUSE ANTI HUMAN CD21:FITC.





Novus Biologicals USA

10730 E. Briarwood Avenue
Centennial, CO 80112
USA
Phone: 303.730.1950
Toll Free: 1.888.506.6887
Fax: 303.730.1966
novus@novusbio.com

Bio-Techne Canada

21 Canmotor Ave
Toronto, ON M8Z 4E6
Canada
Phone: 905.827.6400
Toll Free: 855.668.8722
Fax: 905.827.6402
canada.inquires@bio-techne.com

Bio-Techne Ltd

19 Barton Lane
Abingdon Science Park
Abingdon, OX14 3NB, United Kingdom
Phone: (44) (0) 1235 529449
Free Phone: 0800 37 34 15
Fax: (44) (0) 1235 533420
info.EMEA@bio-techne.com

General Contact Information

www.novusbio.com
Technical Support: technical@novusbio.com
Orders: orders@novusbio.com
General: novus@novusbio.com

Limitations

This product is for research use only and is not approved for use in humans or in clinical diagnosis. Primary Antibodies are guaranteed for 1 year from date of receipt.

For more information on our 100% guarantee, please visit www.novusbio.com/guarantee

Earn gift cards/discounts by submitting a review: www.novusbio.com/reviews/submit/NB100-63575

Earn gift cards/discounts by submitting a publication using this product:
www.novusbio.com/publications

