

Product Datasheet

Integrin beta 1/CD29 Antibody (12G10) - BSA Free NB100-63255

Unit Size: 0.1 mg

Store at 4C short term. Aliquot and store at -20C long term. Avoid freeze-thaw cycles.

www.novusbio.com



technical@novusbio.com

Reviews: 1 Publications: 2

Protocols, Publications, Related Products, Reviews, Research Tools and Images at:
www.novusbio.com/NB100-63255

Updated 2/21/2025 v.20.1

**Earn rewards for product
reviews and publications.**

Submit a publication at www.novusbio.com/publications

Submit a review at www.novusbio.com/reviews/destination/NB100-63255



NB100-63255

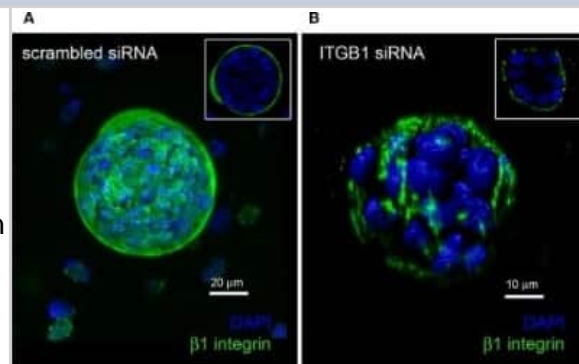
Integrin beta 1/CD29 Antibody (12G10) - BSA Free

| Product Information | |
|-----------------------------|---|
| Unit Size | 0.1 mg |
| Concentration | 1.0 mg/ml |
| Storage | Store at 4C short term. Aliquot and store at -20C long term. Avoid freeze-thaw cycles. |
| Clonality | Monoclonal |
| Clone | 12G10 |
| Preservative | 0.09% Sodium Azide |
| Isotype | IgG1 |
| Purity | Protein G purified |
| Buffer | PBS |
| Product Description | |
| Host | Mouse |
| Gene ID | 3688 |
| Gene Symbol | ITGB1 |
| Species | Human |
| Reactivity Notes | Predicted cross-reactivities: Mink, Rabbit |
| Marker | Stem Cell Marker |
| Specificity/Sensitivity | NB100-63255 recognises the human beta1 integrin. This has been shown to bind to a ligand induced binding site, binding being increased in the presence of fibronectin ligand. This also enhances alpha 5 - beta 1 - fibronectin interactions. |
| Immunogen | Purified human beta1 integrin preparation from HT1080 fibrosarcoma cell extract |
| Product Application Details | |
| Applications | ELISA, Flow Cytometry, Immunohistochemistry, Immunohistochemistry-Frozen, Knockdown Validated |
| Recommended Dilutions | Flow Cytometry 1:25-1:50, ELISA 10 ug/mL, Immunohistochemistry 1:10-1:500, Immunohistochemistry-Frozen 1:10-1:500, Knockdown Validated |

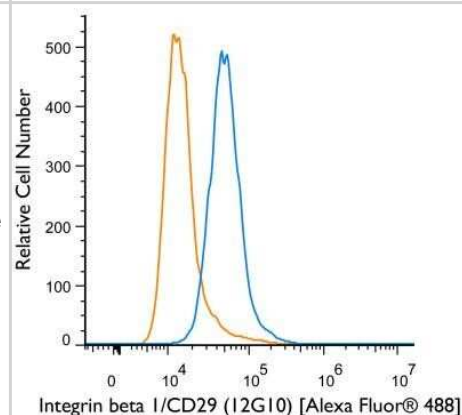


Images

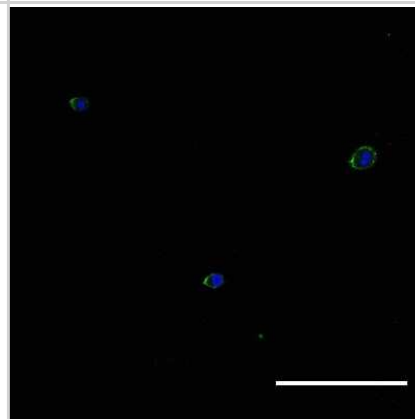
Immunocytochemistry/Immunofluorescence: Integrin beta 1/CD29 Antibody (12G10) [NB100-63255] - Quantification of knockdown of Beta1 integrin in hS/PC microstructures. hS/PC microstructures formed in HA-based hydrogels and were transfected with scrambled siRNA or ITGB1 siRNA. Immunocytochemistry was used to determine Beta1 integrin expression and spatial distribution of Beta1 integrin 46 h post-transfection. Image analysis software was used to quantify Beta1 integrin expression at microstructure surfaces from confocal micrographs and coverage indices were calculated for scrambled siRNA (A) and ITGB1 siRNA (B) groups where a 63% reduction in Beta1 integrin expression at microstructure surfaces was quantified. Image collected and cropped by CiteAb from the following publication (<https://www.frontiersin.org/article/10.3389/fcell.2019.00224/full>) licensed under a CC-BY license.



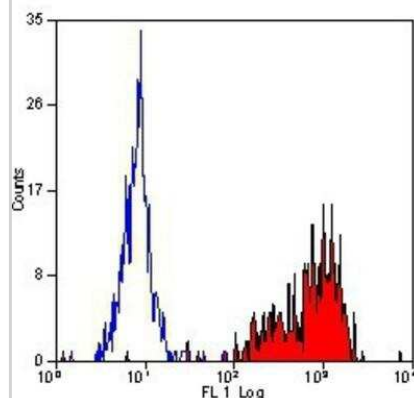
Flow Cytometry: Integrin beta 1/CD29 Antibody (12G10) [NB100-63255] - Flow Cytometry: Integrin beta 1/CD29 Antibody (12G10) [Alexa Fluor 488] [NB100-63255AF488] - A cell surface stain was performed on A549 cells with Integrin beta 1/CD29 (12G10) antibody NB100-63255AF488 (blue) and a matched isotype control NBP1-97005AF488 (orange). Cells were incubated in an antibody dilution of 5 ug/mL for 20 minutes at room temperature. Both antibodies were conjugated to Alexa Fluor 488. Image using the Alexa Fluor 488 form of this antibody.



Immunocytochemistry/Immunofluorescence: Integrin beta 1/CD29 Antibody (12G10) [NB100-63255] - Human salivary gland progenitor cells express integrin beta 1 by day 1 in three-dimensional hyaluronan-based hydrogels. Image from verified customer review.



Flow Cytometry: Integrin beta 1/CD29 Antibody (12G10) [NB100-63255] - Staining of human peripheral blood monocytes with MOUSE ANTI HUMAN CD29.



Publications

Hakanpää L, Abouelezz A, Lenaerts AS et al. Reticular adhesions are assembled at flat clathrin lattices and opposed by active integrin $\alpha 5 \beta 1$ The Journal of cell biology 2023-08-07 [PMID: 37233325]

Wu D, Witt RL, Harrington DA, Farach-Carson MC Dynamic Assembly of Human Salivary Stem/Progenitor Microstructures Requires Coordinated $\alpha 1 \beta 1$ Integrin-Mediated Motility Front Cell Dev Biol 2019-10-16 [PMID: 31750298] (WB, ICC/IF, Human)





Novus Biologicals USA

10730 E. Briarwood Avenue
Centennial, CO 80112
USA
Phone: 303.730.1950
Toll Free: 1.888.506.6887
Fax: 303.730.1966
nb-customerservice@bio-techne.com

Bio-Techne Canada

21 Canmotor Ave
Toronto, ON M8Z 4E6
Canada
Phone: 905.827.6400
Toll Free: 855.668.8722
Fax: 905.827.6402
canada.inquires@bio-techne.com

Bio-Techne Ltd

19 Barton Lane
Abingdon Science Park
Abingdon, OX14 3NB, United Kingdom
Phone: (44) (0) 1235 529449
Free Phone: 0800 37 34 15
Fax: (44) (0) 1235 533420
info.EMEA@bio-techne.com

General Contact Information

www.novusbio.com
Technical Support: nb-technical@bio-techne.com
Orders: nb-customerservice@bio-techne.com
General: novus@novusbio.com

Products Related to NB100-63255

| | |
|------------------|---|
| NBL1-12069 | Integrin beta 1/CD29 Overexpression Lysate |
| HAF007 | Goat anti-Mouse IgG Secondary Antibody [HRP] |
| NB720-B | Rabbit anti-Mouse IgG (H+L) Secondary Antibody [Biotin] |
| NBP1-97005-0.5mg | Mouse IgG1 Isotype Control (MG1) |

Limitations

This product is for research use only and is not approved for use in humans or in clinical diagnosis. Primary Antibodies are guaranteed for 1 year from date of receipt.

For more information on our 100% guarantee, please visit www.novusbio.com/guarantee

Earn gift cards/discounts by submitting a review: www.novusbio.com/reviews/submit/NB100-63255

Earn gift cards/discounts by submitting a publication using this product:
www.novusbio.com/publications

