

Product Datasheet

XPF Antibody NB100-60679

Unit Size: 0.1 ml

Store at 4C. Do not freeze.

www.novusbio.com



technical@novusbio.com

Publications: 3

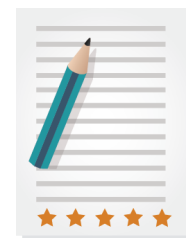
Protocols, Publications, Related Products, Reviews, Research Tools and Images at:
www.novusbio.com/NB100-60679

Updated 10/23/2024 v.20.1

Earn rewards for product
reviews and publications.

Submit a publication at www.novusbio.com/publications

Submit a review at www.novusbio.com/reviews/destination/NB100-60679



NB100-60679

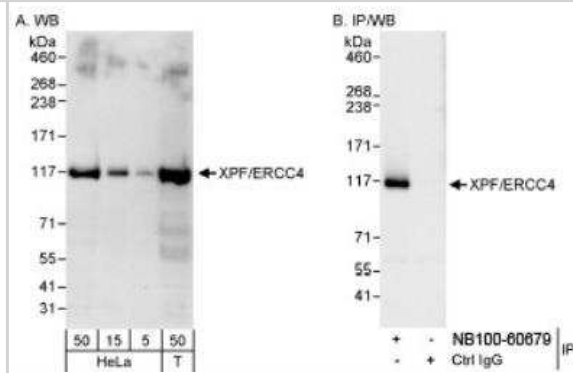
XPF Antibody

Product Information	
Unit Size	0.1 ml
Concentration	0.2 mg/ml
Storage	Store at 4C. Do not freeze.
Clonality	Polyclonal
Preservative	0.09% Sodium Azide
Isotype	IgG
Purity	Immunogen affinity purified
Buffer	TBS and 0.1% BSA
Target Molecular Weight	104 kDa
Product Description	
Host	Rabbit
Gene ID	2072
Gene Symbol	ERCC4
Species	Human
Immunogen	The immunogen recognized by this antibody maps to a region between residue 855 and 905 of human xeroderma pigmentosum, complementation group F using the numbering given in entry AAB07689.1 (GeneID 2072).
Product Application Details	
Applications	Western Blot, ELISA, Immunohistochemistry, Immunohistochemistry-Paraffin, Immunoprecipitation
Recommended Dilutions	Western Blot 1:2000-1:10000, ELISA 1:100-1:2000, Immunohistochemistry 1:100-1:500, Immunoprecipitation 2-5 ug/mg lysate, Immunohistochemistry-Paraffin 1:100-1:500
Application Notes	ELISA reactivity reported in scientific literature (PMID:20812782). Epitope retrieval with citrate buffer pH6.0 is recommended for FFPE tissue sections.

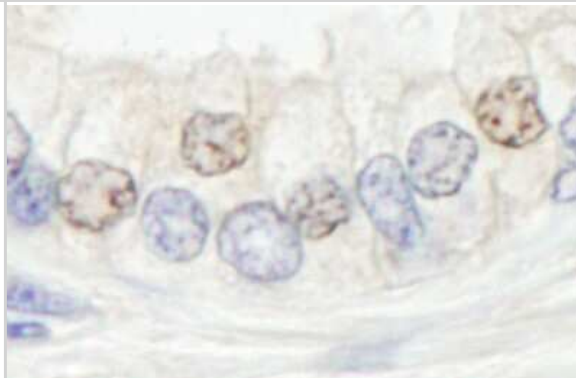


Images

Western Blot: XPF Antibody [NB100-60679] - Detection of Human XPF/ERCC4 on HeLa whole cell lysate using NB100-60679.



Immunohistochemistry-Paraffin: XPF Antibody [NB100-60679] - Human prostate carcinoma. Antibody: Affinity purified rabbit anti- XPF/ERCC4 used at a dilution of 1:200 (1ug/ml). Detection: DAB



Publications

Kuo MS, Adam J, Dorvault N, Robin A. A novel antibody-based approach to detect the functional ERCC1-202 isoform. *DNA Repair (Amst.)*. 2018-02-11 [PMID: 29482102] (Human)

Su CH, Chu WC, Lan KH et al. Gemcitabine causes telomere attrition by stabilizing TRF3 *Eur J Cancer* 2012-06-13 [PMID: 22704123] (IP, WB, Human)

Earley JN, Turchi JJ. Interrogation of Nucleotide Excision Repair Capacity: Impact on Platinum-Based Cancer Therapy *Antioxid Redox Signal* 2011-06-15 [PMID: 20812782] (ELISA, Human)



Novus Biologicals USA

10730 E. Briarwood Avenue
Centennial, CO 80112
USA
Phone: 303.730.1950
Toll Free: 1.888.506.6887
Fax: 303.730.1966
nb-customerservice@bio-techne.com

Bio-Techne Canada

21 Canmotor Ave
Toronto, ON M8Z 4E6
Canada
Phone: 905.827.6400
Toll Free: 855.668.8722
Fax: 905.827.6402
canada.inquires@bio-techne.com

Bio-Techne Ltd

19 Barton Lane
Abingdon Science Park
Abingdon, OX14 3NB, United Kingdom
Phone: (44) (0) 1235 529449
Free Phone: 0800 37 34 15
Fax: (44) (0) 1235 533420
info.EMEA@bio-techne.com

General Contact Information

www.novusbio.com
Technical Support: nb-technical@bio-techne.com
Orders: nb-customerservice@bio-techne.com
General: novus@novusbio.com

Products Related to NB100-60679

NBL1-10322	XPF Overexpression Lysate
HAF008	Goat anti-Rabbit IgG Secondary Antibody [HRP]
NB7160	Goat anti-Rabbit IgG (H+L) Secondary Antibody [HRP]
NBP2-24891	Rabbit IgG Isotype Control

Limitations

This product is for research use only and is not approved for use in humans or in clinical diagnosis. Primary Antibodies are guaranteed for 1 year from date of receipt.

For more information on our 100% guarantee, please visit www.novusbio.com/guarantee

Earn gift cards/discounts by submitting a review: www.novusbio.com/reviews/submit/NB100-60679

Earn gift cards/discounts by submitting a publication using this product:
www.novusbio.com/publications

