

# Product Datasheet

## cleavage stimulation factor Antibody - BSA Free NB100-60443

Unit Size: 100 ul

Store at 4C. Do not freeze.

[www.novusbio.com](http://www.novusbio.com)



[technical@novusbio.com](mailto:technical@novusbio.com)

Reviews: 1

Protocols, Publications, Related Products, Reviews, Research Tools and Images at:  
[www.novusbio.com/NB100-60443](http://www.novusbio.com/NB100-60443)

Updated 2/21/2025 v.20.1

Earn rewards for product  
reviews and publications.

Submit a publication at [www.novusbio.com/publications](http://www.novusbio.com/publications)

Submit a review at [www.novusbio.com/reviews/destination/NB100-60443](http://www.novusbio.com/reviews/destination/NB100-60443)



**NB100-60443**

cleavage stimulation factor Antibody - BSA Free

Product Information	
Unit Size	100 ul
Concentration	1.0 mg/ml
Storage	Store at 4C. Do not freeze.
Clonality	Polyclonal
Preservative	0.09% Sodium Azide
Isotype	IgG
Purity	Immunogen affinity purified
Buffer	Tris-Citrate/Phosphate (pH 7.0 - 8.0)

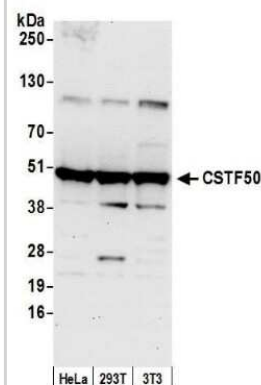
Product Description	
Host	Rabbit
Gene ID	1477
Gene Symbol	CSTF1
Species	Human, Mouse
Immunogen	The immunogen recognized by this antibody maps to a region between residue 75 and 125 of human cleavage stimulation factor, 3' pre-RNA, subunit 1, 50kDa using the numbering given in entry NP_001315.1 (GenelD 1477 ).

Product Application Details	
Applications	Western Blot, Immunohistochemistry, Immunohistochemistry-Paraffin, Immunoprecipitation
Recommended Dilutions	Western Blot 1:1000 - 1:5000, Immunohistochemistry 1:1000 - 1:5000, Immunoprecipitation 2 - 10 ug/mg lysate, Immunohistochemistry-Paraffin 1:1000 - 1:5000
Application Notes	Epitope retrieval with citrate buffer pH 6.0 is recommended for FFPE tissue sections.

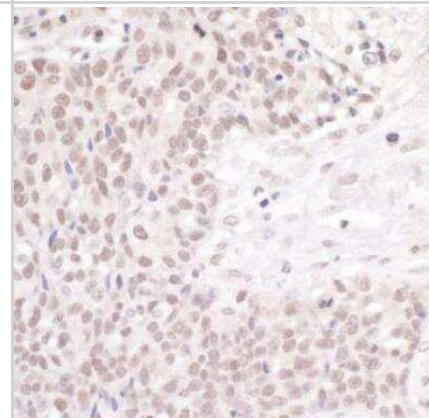


## Images

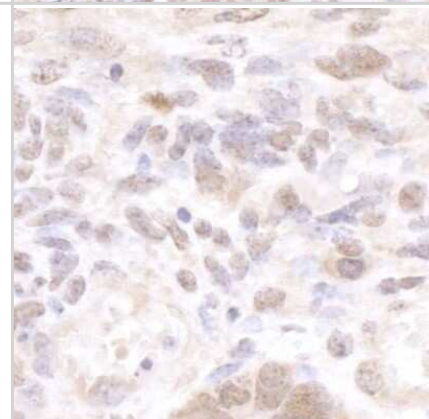
**Western Blot: cleavage stimulation factor Antibody [NB100-60443] -** Detection of human and mouse CSTF50 by western blot. Samples: Whole cell lysate (50 ug) from HeLa, HEK293T, and mouse NIH 3T3 cells prepared using NETN lysis buffer. Antibody: Affinity purified rabbit anti-CSTF50 antibody NB100-60443 used for WB at 0.4 ug/ml. Detection: Chemiluminescence with an exposure time of 30 seconds.



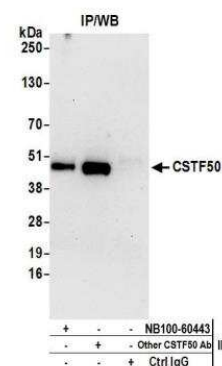
**Immunohistochemistry-Paraffin: cleavage stimulation factor Antibody [NB100-60443] -** FFPE section of human ovarian carcinoma. Antibody: Affinity purified rabbit anti-CSTF50 used at a dilution of 1:5,000 (0.2ug/ml). Detection: DAB



**Immunohistochemistry-Paraffin: cleavage stimulation factor Antibody [NB100-60443] -** Detection of mouse CSTF50 by immunohistochemistry. Sample: FFPE section of mouse teratoma. Antibody: Affinity purified rabbit anti-CSTF50 (NB100-60443). Detection: DAB



**Immunoprecipitation: cleavage stimulation factor Antibody [NB100-60443] -** Detection of human CSTF50 by western blot of immunoprecipitates. Samples: Whole cell lysate (0.5 or 1.0 mg per IP reaction; 20% of IP loaded) from Hela cells prepared using NETN lysis buffer. Antibodies: Affinity purified rabbit anti-CSTF50 antibody NB100-60443 used for IP at 6 ug per reaction. CSTF50 was also immunoprecipitated by another rabbit anti-CSTF50 antibody. For blotting immunoprecipitated CSTF50, NB100-60443 was used at 1 ug/ml. Detection: Chemiluminescence with an exposure time of 30 seconds.





### **Novus Biologicals USA**

10730 E. Briarwood Avenue  
Centennial, CO 80112  
USA  
Phone: 303.730.1950  
Toll Free: 1.888.506.6887  
Fax: 303.730.1966  
nb-customerservice@bio-techne.com

### **Bio-Techne Canada**

21 Canmotor Ave  
Toronto, ON M8Z 4E6  
Canada  
Phone: 905.827.6400  
Toll Free: 855.668.8722  
Fax: 905.827.6402  
canada.inquires@bio-techne.com

### **Bio-Techne Ltd**

19 Barton Lane  
Abingdon Science Park  
Abingdon, OX14 3NB, United Kingdom  
Phone: (44) (0) 1235 529449  
Free Phone: 0800 37 34 15  
Fax: (44) (0) 1235 533420  
info.EMEA@bio-techne.com

### **General Contact Information**

www.novusbio.com  
Technical Support: nb-technical@bio-techne.com  
Orders: nb-customerservice@bio-techne.com  
General: novus@novusbio.com

### **Products Related to NB100-60443**

---

NBL1-09555	cleavage stimulation factor Overexpression Lysate
HAF008	Goat anti-Rabbit IgG Secondary Antibody [HRP]
NB7160	Goat anti-Rabbit IgG (H+L) Secondary Antibody [HRP]
NBP2-24891	Rabbit IgG Isotype Control

---

### **Limitations**

This product is for research use only and is not approved for use in humans or in clinical diagnosis. Primary Antibodies are guaranteed for 1 year from date of receipt.

For more information on our 100% guarantee, please visit [www.novusbio.com/guarantee](http://www.novusbio.com/guarantee)

Earn gift cards/discounts by submitting a review: [www.novusbio.com/reviews/submit/NB100-60443](http://www.novusbio.com/reviews/submit/NB100-60443)

Earn gift cards/discounts by submitting a publication using this product:  
[www.novusbio.com/publications](http://www.novusbio.com/publications)

