

Product Datasheet

XPV/DNA polymerase eta Antibody NB100-60424

Unit Size: 0.1 ml

Store at 4C. Do not freeze.

www.novusbio.com



technical@novusbio.com

Publications: 3

Protocols, Publications, Related Products, Reviews, Research Tools and Images at:
www.novusbio.com/NB100-60424

Updated 10/23/2024 v.20.1

Earn rewards for product
reviews and publications.

Submit a publication at www.novusbio.com/publications

Submit a review at www.novusbio.com/reviews/destination/NB100-60424



NB100-60424

XPV/DNA polymerase eta Antibody

| Product Information | |
|-------------------------|-----------------------------|
| Unit Size | 0.1 ml |
| Concentration | 0.2 mg/ml |
| Storage | Store at 4C. Do not freeze. |
| Clonality | Polyclonal |
| Preservative | 0.09% Sodium Azide |
| Isotype | IgG |
| Purity | Immunogen affinity purified |
| Buffer | TBS and 0.1% BSA |
| Target Molecular Weight | 78 kDa |

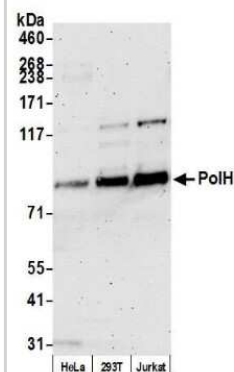
| Product Description | |
|---------------------|--|
| Host | Rabbit |
| Gene ID | 5429 |
| Gene Symbol | POLH |
| Species | Human |
| Immunogen | The immunogen recognized by this antibody maps to a region between residue 690 and 713 of human polymerase (DNA directed), eta using the numbering given in entry NP_006493.1 (GeneID 5429). |

| Product Application Details | |
|-----------------------------|---|
| Applications | Western Blot, Immunoprecipitation |
| Recommended Dilutions | Western Blot 1:2000 -1:10000, Immunoprecipitation 2-10 ug/mg lysate |

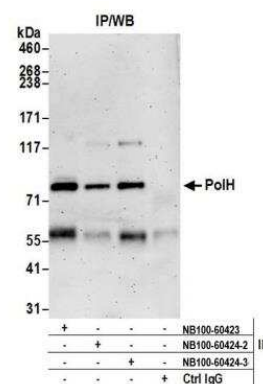


Images

Western Blot: XPV/DNA polymerase eta Antibody [NB100-60424] -
 Detection of human PolH by western blot. Samples: Whole cell lysate (50 ug) from HeLa, HEK293T, and Jurkat cells prepared using NETN lysis buffer. Antibody: Affinity purified Rabbit anti-PolH antibody NB100-60424 used for WB at 0.1 ug/ml. Detection: Chemiluminescence with an exposure time of 3 minutes.



Immunoprecipitation: XPV/DNA polymerase eta Antibody [NB100-60424] -
 Detection of human XPV/DNA polymerase eta/PolH by western blot of immunoprecipitates. Samples: Whole cell lysate (1.0 mg per IP reaction; 20% of IP loaded) from HeLa cells prepared using NETN lysis buffer. Antibodies: Affinity purified Rabbit anti-PolH antibody NB100-60424 (lot 3) used for IP at 6 ug per reaction. PolH was also immunoprecipitated by a previous lot of this antibody (lot 2) and rabbit anti-PolH antibody NB100-60423. For blotting immunoprecipitated PolH, NB100-60424 was used at 0.1 ug/ml. Chemiluminescence with an exposure time of 3 minutes.



Publications

Ihle M Connections between stem cell features, EMT, DNA Replication and DNA damage response: mechanisms and therapeutic implication Thesis 2021-01-01 (WB, PLA, ICC/IF, Rabbit)

Barkley LR, Palle K, Durando M et al. c-Jun N-terminal kinase-mediated Rad18 phosphorylation facilitates Pol? recruitment to stalled replication forks. Mol Biol Cell 2012-05-01 [PMID: 22456510]

Day TA, Palle K, Barkley LR et al. Phosphorylated Rad18 directs DNA polymerase ? to sites of stalled replication. J Cell Biol 2010-11-01 [PMID: 21098111]



Novus Biologicals USA

10730 E. Briarwood Avenue
Centennial, CO 80112
USA
Phone: 303.730.1950
Toll Free: 1.888.506.6887
Fax: 303.730.1966
nb-customerservice@bio-techne.com

Bio-Techne Canada

21 Canmotor Ave
Toronto, ON M8Z 4E6
Canada
Phone: 905.827.6400
Toll Free: 855.668.8722
Fax: 905.827.6402
canada.inquires@bio-techne.com

Bio-Techne Ltd

19 Barton Lane
Abingdon Science Park
Abingdon, OX14 3NB, United Kingdom
Phone: (44) (0) 1235 529449
Free Phone: 0800 37 34 15
Fax: (44) (0) 1235 533420
info.EMEA@bio-techne.com

General Contact Information

www.novusbio.com
Technical Support: nb-technical@bio-techne.com
Orders: nb-customerservice@bio-techne.com
General: novus@novusbio.com

Products Related to NB100-60424

| | |
|--------------------|---|
| HAF008 | Goat anti-Rabbit IgG Secondary Antibody [HRP] |
| NB7160 | Goat anti-Rabbit IgG (H+L) Secondary Antibody [HRP] |
| NBP2-24891 | Rabbit IgG Isotype Control |
| H00005429-P01-10ug | Recombinant Human XPV/DNA polymerase eta GST (N-Term) Protein |

Limitations

This product is for research use only and is not approved for use in humans or in clinical diagnosis. Primary Antibodies are guaranteed for 1 year from date of receipt.

For more information on our 100% guarantee, please visit www.novusbio.com/guarantee

Earn gift cards/discounts by submitting a review: www.novusbio.com/reviews/submit/NB100-60424

Earn gift cards/discounts by submitting a publication using this product:
www.novusbio.com/publications

