

Product Datasheet

CEP350 Antibody NB100-59811

Unit Size: 100 ul

Store at 4C. Do not freeze.

www.novusbio.com



technical@novusbio.com

Publications: 8

Protocols, Publications, Related Products, Reviews, Research Tools and Images at:
www.novusbio.com/NB100-59811

Updated 12/20/2023 v.20.1

**Earn rewards for product
reviews and publications.**

Submit a publication at www.novusbio.com/publications

Submit a review at www.novusbio.com/reviews/destination/NB100-59811



NB100-59811**CEP350 Antibody**

Product Information	
Unit Size	100 ul
Concentration	1.0 mg/ml
Storage	Store at 4C. Do not freeze.
Clonality	Polyclonal
Preservative	0.09% Sodium Azide
Isotype	IgG
Purity	Immunogen affinity purified
Buffer	Tris-Citrate/Phosphate (pH 7.0 - 8.0)
Target Molecular Weight	351 kDa

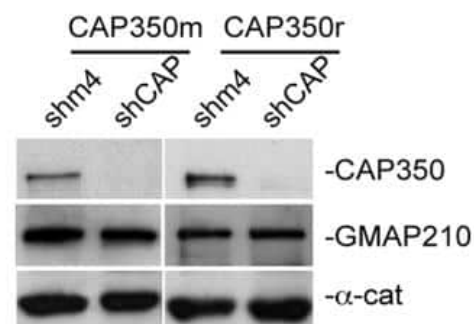
Product Description	
Host	Rabbit
Gene ID	9857
Gene Symbol	CEP350
Species	Human, Mouse, Canine
Reactivity Notes	Canine reactivity reported in scientific literature (PMID: 25764135). Mouse reactivity reported in scientific literature (PMID: 28625565).
Immunogen	The immunogen recognized by this antibody maps to a region between residue 3066 and 3116 of human centrosome-associated protein 350 using the numbering given in entry NP_055625.3 (GenelD 9857).

Product Application Details	
Applications	Western Blot, Immunocytochemistry/ Immunofluorescence, Immunoprecipitation, Knockdown Validated
Recommended Dilutions	Western Blot 1:100-1:2000, Immunocytochemistry/ Immunofluorescence 1:10-1:2000, Immunoprecipitation 2-5 ug/mg lysate, Knockdown Validated
Application Notes	This antibody is not recommended for crude preparations but can be used to blot CAP350 in enriched sources. ICC/IF, WB reactivity reported in (PMID: 20861314).

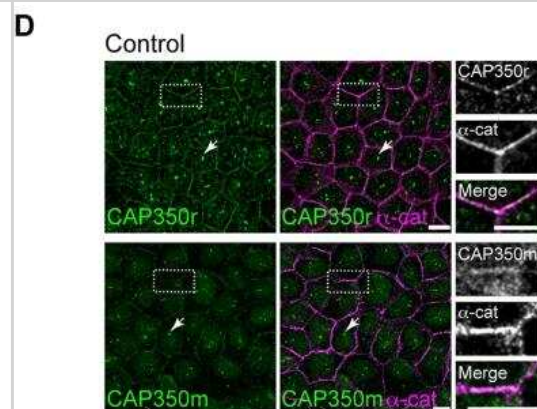


Images

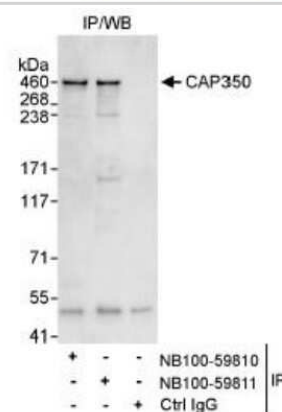
Knockdown Validated: CEP350 Antibody [NB100-59811] - Representative WB of MDCKII cells with CAP350m and CAP350r (NB100-911) antibodies showing efficient depletion of CAP350 in cells infected with shCAP350 (shCAP) lentiviruses compared to those infected with control shm4 lentivirus. GMAP210 was used as a loading control. Alpha-catenin levels were also examined. Image collected and cropped by CiteAb from the following publication (<https://dx.plos.org/10.1371/journal.pbio.1002087>) licensed under a CC-BY license.



Immunocytochemistry/Immunofluorescence: CEP350 Antibody [NB100-59811] - Control MDCKII cells processed by IF with either anti-CAP350 rabbit antibody (CAP350r, top panels, NB100-911) or anti-CAP350 mouse antibody (CAP350m, bottom) and alpha-catenin antibodies. At right, high-magnification images of the boxed areas showing single labellings and merged images. Image collected and cropped by CiteAb from the following publication (<https://dx.plos.org/10.1371/journal.pbio.1002087>) licensed under a CC-BY license.



Immunoprecipitation: CEP350 Antibody [NB100-59811] - Detection of Human CAP350 on HeLa whole cell lysate using NB100-59811. CAP350 was also immunoprecipitated by rabbit anti-CAP350 antibody NB100-59810.



Publications

Tischer T, Yang J, Barford D The APC/C targets the Cep152-Cep63 complex at the centrosome to regulate mitotic spindle assembly Journal of cell science 2021-12-08 [PMID: 34878135] (WB)

Ryu H, Lee H, Lee J, et al. The molecular dynamics of subdistal appendages in multi-ciliated cells Nature communications 2021-01-27 [PMID: 33504787] (IP, Mouse)

Tischer T, Yang J, Barford D Negative feedback between the APC/C and Cep152 at the centrosome regulates mitotic spindle assembly BioRxiv 2020-01-01 (WB, Human)

Tu HQ, Qin XH, Liu ZB et al. Microtubule asters anchored by FSD1 control axoneme assembly and ciliogenesis Nat Commun 2018-12-11 [PMID: 30538248] (ICC/IF, Human)

Wang L, Failler M, Fu W, Dynlacht BD. A distal centriolar protein network controls organelle maturation and asymmetry. Nat Commun. 2018-09-26 [PMID: 30258116] (ICC/IF, Human)

kanie T, Abbott kL, Mooney NA et al. The CEP19-RABL2 GTPase Complex Binds IFT-B to Initiate Intraflagellar Transport at the Ciliary Base. Dev. Cell. 2017-07-10 [PMID: 28625565] (ICC/IF, Mouse)

Gavilan MP, Arjona M, Zurbano A et al. Alpha-catenin-Dependent Recruitment of the Centrosomal Protein CAP350 to Adherens Junctions Allows Epithelial Cells to Acquire a Columnar Shape. PLoS Biol. 2015-03-01 [PMID: 25764135] (ICC/IF, WB, Canine)

Korzeniewski N, Cuevas R, Duensing A, Duensing S. Daughter centriole elongation is controlled by proteolysis. Mol Biol Cell 2010-11-15 [PMID: 20861314] (WB, ICC/IF, Human)





Novus Biologicals USA

10730 E. Briarwood Avenue
Centennial, CO 80112
USA
Phone: 303.730.1950
Toll Free: 1.888.506.6887
Fax: 303.730.1966
nb-customerservice@bio-techne.com

Bio-Techne Canada

21 Canmotor Ave
Toronto, ON M8Z 4E6
Canada
Phone: 905.827.6400
Toll Free: 855.668.8722
Fax: 905.827.6402
canada.inquires@bio-techne.com

Bio-Techne Ltd

19 Barton Lane
Abingdon Science Park
Abingdon, OX14 3NB, United Kingdom
Phone: (44) (0) 1235 529449
Free Phone: 0800 37 34 15
Fax: (44) (0) 1235 533420
info.EMEA@bio-techne.com

General Contact Information

www.novusbio.com
Technical Support: nb-technical@bio-techne.com
Orders: nb-customerservice@bio-techne.com
General: novus@novusbio.com

Limitations

This product is for research use only and is not approved for use in humans or in clinical diagnosis. Primary Antibodies are guaranteed for 1 year from date of receipt.

For more information on our 100% guarantee, please visit www.novusbio.com/guarantee

Earn gift cards/discounts by submitting a review: www.novusbio.com/reviews/submit/NB100-59811

Earn gift cards/discounts by submitting a publication using this product:
www.novusbio.com/publications

