

Product Datasheet

Bcl-xL Antibody NB100-56103

Unit Size: 0.05 ml

Store at 4C short term. Aliquot and store at -20C long term. Avoid freeze-thaw cycles.

www.novusbio.com



technical@novusbio.com

Protocols, Publications, Related Products, Reviews, Research Tools and Images at:
www.novusbio.com/NB100-56103

Updated 11/21/2020 v.20.1

Earn rewards for product
reviews and publications.

Submit a publication at www.novusbio.com/publications

Submit a review at www.novusbio.com/reviews/destination/NB100-56103



NB100-56103

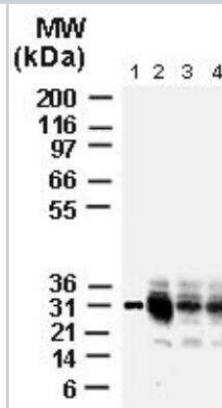
Bcl-xL Antibody

| Product Information | |
|-----------------------------|--|
| Unit Size | 0.05 ml |
| Concentration | This product is unpurified. The exact concentration of antibody is not quantifiable. |
| Storage | Store at 4C short term. Aliquot and store at -20C long term. Avoid freeze-thaw cycles. |
| Clonality | Polyclonal |
| Preservative | 0.05% Sodium Azide |
| Isotype | IgG |
| Purity | Unpurified |
| Buffer | Whole antisera |
| Product Description | |
| Host | Rabbit |
| Gene ID | 598 |
| Gene Symbol | BCL2L1 |
| Species | Human, Mouse, Rat, Canine |
| Immunogen | A recombinant human Bcl-XL protein without the N-terminal transmembrane portion was used as immunogen. |
| Product Application Details | |
| Applications | Western Blot, Immunohistochemistry, Immunohistochemistry-Frozen, Immunohistochemistry-Paraffin, Immunoprecipitation |
| Recommended Dilutions | Western Blot 1:1000 - 1:2000, Immunohistochemistry, Immunoprecipitation, Immunohistochemistry-Paraffin 1:1000 - 1:5000, Immunohistochemistry-Frozen |
| Application Notes | WB: 1:1000-1:2000~; IHC (paraffin): 1:1000-1:5000~; IHC (frozen): Users should optimize according to model and immunodetection system used (secondary reagents)~; IP: 1:50-1:200 |

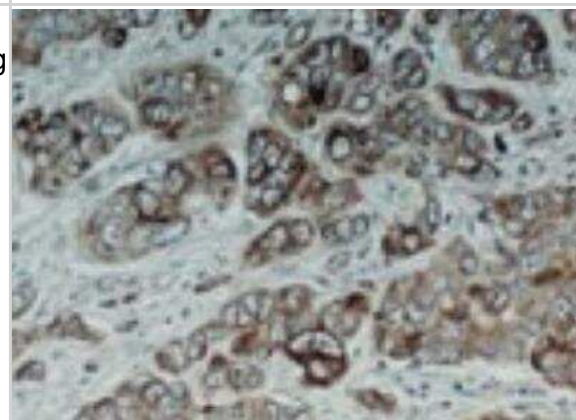


Images

Western Blot: Bcl-xL Antibody [NB100-56103] - Analysis of Bcl-X using this antibody. Lane 1: lysates from isolated rat liver mitochondria. Lanes 2-4: rat brain tissue lysates, cortex (lane 2), basal ganglia (lane 3), and cerebellum (lane 4). The antibody detected Bcl-XL at ~30 kDa.



Immunohistochemistry-Paraffin: Bcl-xL Antibody [NB100-56103] - FFPE human colon carcinoma tissue section stained for Bcl-X expression using this antibody at 1:2000. Hematoxylin-eosin counterstain.



Immunohistochemistry-Paraffin: Bcl-xL Antibody [NB100-56103] - FFPE normal human colon epithelium tissue section stained for Bcl-X expression at 1:2000. Hematoxylin-eosin counterstain. A coarse granular Bcl-X staining pattern associated with the mitochondria is observed.





Novus Biologicals USA

10730 E. Briarwood Avenue
Centennial, CO 80112
USA

Phone: 303.730.1950
Toll Free: 1.888.506.6887
Fax: 303.730.1966
novus@novusbio.com

Bio-Techne Canada

21 Canmotor Ave
Toronto, ON M8Z 4E6
Canada

Phone: 905.827.6400
Toll Free: 855.668.8722
Fax: 905.827.6402
canada.inquires@bio-techne.com

Bio-Techne Ltd

19 Barton Lane
Abingdon Science Park
Abingdon, OX14 3NB, United Kingdom
Phone: (44) (0) 1235 529449
Free Phone: 0800 37 34 15
Fax: (44) (0) 1235 533420
info.EMEA@bio-techne.com

General Contact Information

www.novusbio.com
Technical Support: technical@novusbio.com
Orders: orders@novusbio.com
General: novus@novusbio.com

Limitations

This product is for research use only and is not approved for use in humans or in clinical diagnosis. Primary Antibodies are guaranteed for 1 year from date of receipt.

For more information on our 100% guarantee, please visit www.novusbio.com/guarantee

Earn gift cards/discounts by submitting a review: www.novusbio.com/reviews/submit/NB100-56103

Earn gift cards/discounts by submitting a publication using this product:
www.novusbio.com/publications

