

Product Datasheet

SETD1A Antibody - BSA Free

NB100-558

Unit Size: 100 ul

Store at 4C. Do not freeze.

www.novusbio.com



technical@novusbio.com

Publications: 5

Protocols, Publications, Related Products, Reviews, Research Tools and Images at:
www.novusbio.com/NB100-558

Updated 2/21/2025 v.20.1

Earn rewards for product
reviews and publications.

Submit a publication at www.novusbio.com/publications

Submit a review at www.novusbio.com/reviews/destination/NB100-558



NB100-558

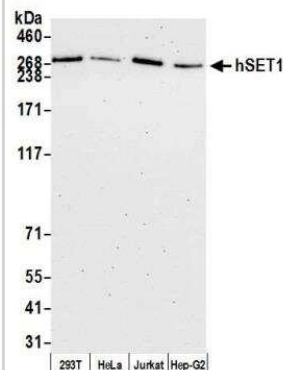
SETD1A Antibody - BSA Free

Product Information	
Unit Size	100 ul
Concentration	1.0 mg/ml
Storage	Store at 4C. Do not freeze.
Clonality	Polyclonal
Preservative	0.09% Sodium Azide
Isotype	IgG
Purity	Immunogen affinity purified
Buffer	Tris-Citrate/Phosphate (pH 7.0 - 8.0)
Product Description	
Host	Rabbit
Gene ID	9739
Gene Symbol	SETD1A
Species	Human, Mouse
Immunogen	A synthetic peptide which maps to a region between residues 1200 and 1250 of human hSET1 (KIAA0339) using the numbering given in TrEMBL entry O15047 (GeneID 9739).
Product Application Details	
Applications	Western Blot, Immunohistochemistry, Immunohistochemistry-Paraffin, Immunoprecipitation, Chromatin Immunoprecipitation (ChIP), Chromatin Immunoprecipitation Sequencing
Recommended Dilutions	Western Blot 1:10000 - 1:25000, Immunohistochemistry 1:2000 - 1:10000, Immunoprecipitation 2-10 ug/mg lysate, Immunohistochemistry-Paraffin 1:2000 - 1:10000, Chromatin Immunoprecipitation (ChIP) 10 ug, Chromatin Immunoprecipitation Sequencing

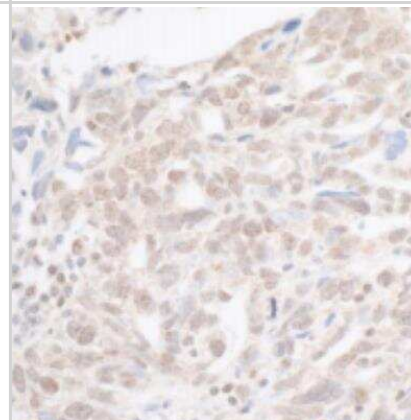


Images

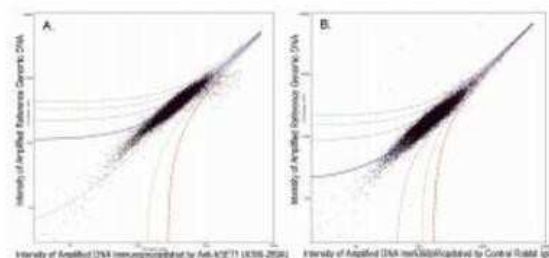
Western Blot: SETD1A Antibody [NB100-558] - Detection of human hSET1 by western blot. Samples: Whole cell lysate (10 ug) from HEK293T, HeLa, Jurkat, and Hep-G2 cells prepared using NETN lysis buffer. Antibody: Affinity purified rabbit anti-hSET1 antibody A300-289A (lot A300-289A-6) used for WB at 0.04 ug/ml. Detection: Chemiluminescence with an exposure time of 75 seconds.



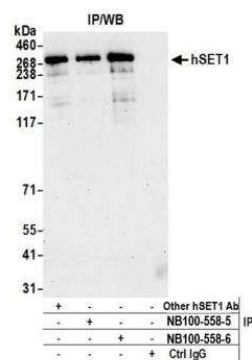
Immunohistochemistry-Paraffin: SETD1A Antibody [NB100-558] - Section of human ovarian carcinoma. Antibody: Affinity purified rabbit anti-hSET1 used at 1:5,000 (0.2 ug/ml). Secondary: HRP-conjugated goat anti-rabbit IgG. Substrate: DAB.



Chromatin Immunoprecipitation: SETD1A Antibody [NB100-558] - Chromatin Immunoprecipitation: SETD1A Antibody [NB100-558] - ChIP-chip scatter plot of anti-hSET1 (NB100-558) enriched DNA binding sites versus input reference DNA. A. 10 mcg of NB100-558 was used to immunoprecipitate chromatin from K562 cells per Ren et al (Genes Dev. 2002 16: 245-256). Immunoprecipitated DNA and reference DNA were amplified via ligation-mediated PCR and the products labeled with fluorescent dUTPs. The labeled ChIP and reference DNA were pooled, hybridized to a DNA microarray, and analyzed. Data points below the +3 SD curve (red line) represent significantly enriched binding sites. B. As a control, a similar experiment was performed using normal rabbit IgG. Compared to the anti-hSET1 ChIP, normal rabbit IgG showed little enrichment.



Immunoprecipitation: SETD1A Antibody [NB100-558] - Detection of human hSET1 by western blot of immunoprecipitates. Samples: Whole cell lysate (1.0 mg per IP reaction; 20% of IP loaded) from HEK293T cells prepared using NETN lysis buffer. Antibodies: Affinity purified rabbit anti-hSET1 antibody NB100-558 (lot NB100-558-6) used for IP at 6 ug per reaction. hSET1 was also immunoprecipitated by a previous lot of this antibody (lot NB100-558-5) and another rabbit anti-hSET1 antibody. For blotting immunoprecipitated hSET1, the other antibody was used at 1:1000. Detection: Chemiluminescence with an exposure time of 30 seconds.



Publications

Wang Z, Yuan H, Roth M et al. SIRT1 deacetylase promotes acquisition of genetic mutations for drug resistance in CML cells. *Oncogene* 2012-03-01 [PMID: 22410779]

El Mansouri FE, Chabane N, Zayed N et al. Contribution of H3K4 methylation by SET-1A to interleukin-1-induced cyclooxygenase 2 and inducible nitric oxide synthase expression in human osteoarthritis chondrocytes. *Arthritis Rheum* 2011-01-01 [PMID: 20862685]

El-Osta A, Brasacchio D, Yao D et al. Transient high glucose causes persistent epigenetic changes and altered gene expression during subsequent normoglycemia. *J Exp Med* 2008-09-01 [PMID: 18809715]

Lee JH, Tate CM, You JS et al. Identification and characterization of the human Set1B histone H3-Lys4 methyltransferase complex. *J Biol Chem* 2007-05-01 [PMID: 17355966]

Jacinto FV, Ballestar E, Esteller M. Impaired recruitment of the histone methyltransferase DOT1L contributes to the incomplete reactivation of tumor suppressor genes upon DNA demethylation. *Oncogene* 2009-11-26 [PMID: 19734945] (Chemotaxis, Human)





Novus Biologicals USA

10730 E. Briarwood Avenue
Centennial, CO 80112
USA
Phone: 303.730.1950
Toll Free: 1.888.506.6887
Fax: 303.730.1966
nb-customerservice@bio-techne.com

Bio-Techne Canada

21 Canmotor Ave
Toronto, ON M8Z 4E6
Canada
Phone: 905.827.6400
Toll Free: 855.668.8722
Fax: 905.827.6402
canada.inquires@bio-techne.com

Bio-Techne Ltd

19 Barton Lane
Abingdon Science Park
Abingdon, OX14 3NB, United Kingdom
Phone: (44) (0) 1235 529449
Free Phone: 0800 37 34 15
Fax: (44) (0) 1235 533420
info.EMEA@bio-techne.com

General Contact Information

www.novusbio.com
Technical Support: nb-technical@bio-techne.com
Orders: nb-customerservice@bio-techne.com
General: novus@novusbio.com

Products Related to NB100-558

HAF008	Goat anti-Rabbit IgG Secondary Antibody [HRP]
NB7160	Goat anti-Rabbit IgG (H+L) Secondary Antibody [HRP]
NBP2-24891	Rabbit IgG Isotype Control
NBP2-49281PEP	SETD1A Recombinant Protein Antigen

Limitations

This product is for research use only and is not approved for use in humans or in clinical diagnosis. Primary Antibodies are guaranteed for 1 year from date of receipt.

For more information on our 100% guarantee, please visit www.novusbio.com/guarantee

Earn gift cards/discounts by submitting a review: www.novusbio.com/reviews/submit/NB100-558

Earn gift cards/discounts by submitting a publication using this product:
www.novusbio.com/publications

