

Product Datasheet

HR6A/UBE2A Antibody - BSA Free NB100-554

Unit Size: 100 ul

Store at 4C. Do not freeze.

www.novusbio.com



technical@novusbio.com

Protocols, Publications, Related Products, Reviews, Research Tools and Images at:
www.novusbio.com/NB100-554

Updated 2/21/2025 v.20.1

Earn rewards for product
reviews and publications.

Submit a publication at www.novusbio.com/publications

Submit a review at www.novusbio.com/reviews/destination/NB100-554



NB100-554

HR6A/UBE2A Antibody - BSA Free

Product Information	
Unit Size	100 ul
Concentration	1.0 mg/ml
Storage	Store at 4C. Do not freeze.
Clonality	Polyclonal
Preservative	0.09% Sodium Azide
Isotype	IgG
Purity	Immunogen affinity purified
Buffer	Tris-Citrate/Phosphate (pH 7.0 - 8.0)

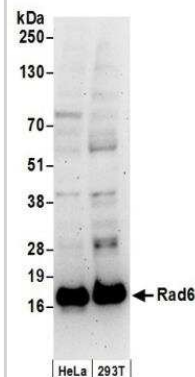
Product Description	
Host	Rabbit
Gene ID	7319
Gene Symbol	UBE2A
Species	Human
Immunogen	A synthetic peptide which maps to a region between residues 10 and 50 of human ubiquitin-conjugating enzyme E2A using the numbering given in Swiss-Prot entry P49459 (GenelD 7319).

Product Application Details	
Applications	Western Blot, Immunohistochemistry, Immunohistochemistry-Paraffin
Recommended Dilutions	Western Blot 1:5000-1:25000, Immunohistochemistry 1:500 - 1:2000, Immunohistochemistry-Paraffin 1:500 - 1:2000
Application Notes	Optimal working dilutions should be determined experimentally by the investigator. Prepare working dilution immediately before use. Epitope retrieval with citrate buffer pH6.0 is recommended for FFPE tissue sections.

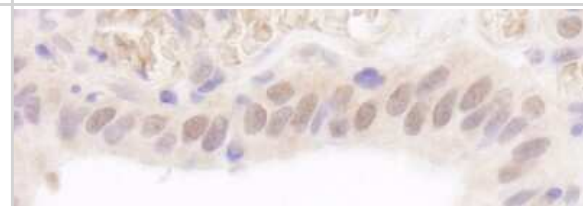


Images

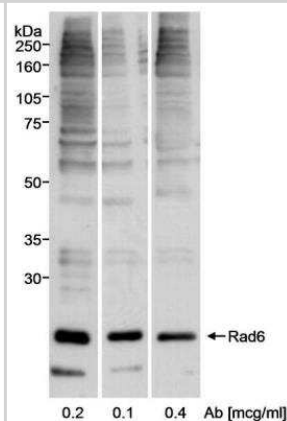
Western Blot: HR6A/UBE2A Antibody [NB100-554] - Detection of Human Rad6 by Western Blot. Samples: Whole cell lysate (50 ug) from HeLa and 293T cells prepared using NETN lysis buffer. Antibody: Affinity purified rabbit anti-Rad6 antibody NB100-554 used for WB at 0.4 ug/ml. Detection: Chemiluminescence with an exposure time of 3 minutes.



Immunohistochemistry: HR6A/UBE2A Antibody [NB100-554] - Sample: FFPE section of human stomach carcinoma. Antibody: Affinity purified rabbit anti- Rad6 used at a dilution of 1:1,000 (1ug/ml). Detection: DAB



Western Blot: HR6A/UBE2A Antibody [NB100-554] - Whole cell lysate (50 ug) from 293T cells.





Novus Biologicals USA

10730 E. Briarwood Avenue
Centennial, CO 80112
USA
Phone: 303.730.1950
Toll Free: 1.888.506.6887
Fax: 303.730.1966
nb-customerservice@bio-techne.com

Bio-Techne Canada

21 Canmotor Ave
Toronto, ON M8Z 4E6
Canada
Phone: 905.827.6400
Toll Free: 855.668.8722
Fax: 905.827.6402
canada.inquires@bio-techne.com

Bio-Techne Ltd

19 Barton Lane
Abingdon Science Park
Abingdon, OX14 3NB, United Kingdom
Phone: (44) (0) 1235 529449
Free Phone: 0800 37 34 15
Fax: (44) (0) 1235 533420
info.EMEA@bio-techne.com

General Contact Information

www.novusbio.com
Technical Support: nb-technical@bio-techne.com
Orders: nb-customerservice@bio-techne.com
General: novus@novusbio.com

Products Related to NB100-554

HAF008	Goat anti-Rabbit IgG Secondary Antibody [HRP]
NB7160	Goat anti-Rabbit IgG (H+L) Secondary Antibody [HRP]
NBP2-24891	Rabbit IgG Isotype Control
NBP2-57290PEP	HR6A/UBE2A Recombinant Protein Antigen

Limitations

This product is for research use only and is not approved for use in humans or in clinical diagnosis. Primary Antibodies are guaranteed for 1 year from date of receipt.

For more information on our 100% guarantee, please visit www.novusbio.com/guarantee

Earn gift cards/discounts by submitting a review: www.novusbio.com/reviews/submit/NB100-554

Earn gift cards/discounts by submitting a publication using this product:
www.novusbio.com/publications

