

Product Datasheet

Separase Antibody (XJ11-1B12) - BSA Free NB100-439SS

Unit Size: 0.025 ml

Aliquot and store at -20C or -80C. Avoid freeze-thaw cycles.

www.novusbio.com



technical@novusbio.com

Publications: 1

Protocols, Publications, Related Products, Reviews, Research Tools and Images at:
www.novusbio.com/NB100-439

Updated 10/23/2024 v.20.1

Earn rewards for product
reviews and publications.

Submit a publication at www.novusbio.com/publications

Submit a review at www.novusbio.com/reviews/destination/NB100-439



NB100-439SS

Separase Antibody (XJ11-1B12) - BSA Free

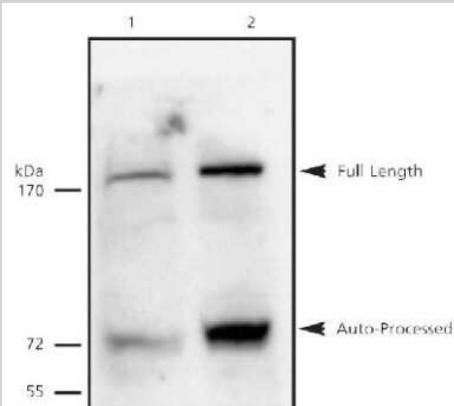
Product Information	
Unit Size	0.025 ml
Concentration	0.9 mg/ml
Storage	Aliquot and store at -20C or -80C. Avoid freeze-thaw cycles.
Clonality	Monoclonal
Clone	XJ11-1B12
Preservative	0.1% Sodium Azide
Isotype	IgG1 Kappa
Purity	Protein G purified
Buffer	PBS

Product Description	
Host	Mouse
Gene ID	9700
Gene Symbol	ESPL1
Species	Human
Immunogen	Maltose-Binding Protein fusion of a C-terminal fragment of human Separase (residues 1866-1996). [UniProt# Q14674]

Product Application Details	
Applications	Western Blot
Recommended Dilutions	Western Blot 1:500
Application Notes	This Separase (XJ11-1B12) antibody is useful for Western Blot, where a band is seen at ~220 kDa (full-length form) and ~65 kDa (auto-processed form).

Images

Western Blot: Separase Antibody (XJ11-1B12) [NB100-439] - Separase detected in 5C6 cell lysates using NB 100-439. Lane 1: Non-induced lysate. Lane 2: Lysate induced with ponasterone.

**Publications**

Sun Y, Kucej M, Fan HY et al. Separase is recruited to mitotic chromosomes to dissolve sister chromatid cohesion in a DNA-dependent manner. Cell 2009-04-03 [PMID: 19345191] (Human)

Procedures

Western Blot protocol for Separase Antibody (NB100-439)

Separase Antibody (XJ11-1B12):

1. Load protein on gel (ie: ~15 ug of Ecdysone-inducible cell line 5C6) and run.
2. Transfer protein to nitrocellulose (Schleicher&Schuell, cat# BA83).
3. Block the membrane with 5% milk for 30 minutes at room temperature.
4. Incubate the membrane with anti-separase [cat# NB 100-439] (1:500), overnight at 4C or 2 h at room temperature. Milk or PBS-T are good for this dilution.
5. Wash the membrane 3 times, 10 minutes per wash in PBS with 0.1% Tween-20 (PBS-T).
6. Incubate with secondary antibody for 30 minutes at room temperature. Use milk in PBS-T as a diluent.
7. Rinse the membrane 2 times with deionized water and place in an ECL working solution.
8. Expose to the film.





Novus Biologicals USA

10730 E. Briarwood Avenue
Centennial, CO 80112
USA
Phone: 303.730.1950
Toll Free: 1.888.506.6887
Fax: 303.730.1966
nb-customerservice@bio-techne.com

Bio-Techne Canada

21 Canmotor Ave
Toronto, ON M8Z 4E6
Canada
Phone: 905.827.6400
Toll Free: 855.668.8722
Fax: 905.827.6402
canada.inquires@bio-techne.com

Bio-Techne Ltd

19 Barton Lane
Abingdon Science Park
Abingdon, OX14 3NB, United Kingdom
Phone: (44) (0) 1235 529449
Free Phone: 0800 37 34 15
Fax: (44) (0) 1235 533420
info.EMEA@bio-techne.com

General Contact Information

www.novusbio.com
Technical Support: nb-technical@bio-techne.com
Orders: nb-customerservice@bio-techne.com
General: novus@novusbio.com

Limitations

This product is for research use only and is not approved for use in humans or in clinical diagnosis. Primary Antibodies are guaranteed for 1 year from date of receipt.

For more information on our 100% guarantee, please visit www.novusbio.com/guarantee

Earn gift cards/discounts by submitting a review: www.novusbio.com/reviews/submit/NB100-439

Earn gift cards/discounts by submitting a publication using this product:
www.novusbio.com/publications

