

Product Datasheet

FKBP15 Antibody - BSA Free

NB100-423

Unit Size: 100 ul

Store at 4C. Do not freeze.

www.novusbio.com



technical@novusbio.com

Protocols, Publications, Related Products, Reviews, Research Tools and Images at:
www.novusbio.com/NB100-423

Updated 2/21/2025 v.20.1

Earn rewards for product
reviews and publications.

Submit a publication at www.novusbio.com/publications

Submit a review at www.novusbio.com/reviews/destination/NB100-423



NB100-423

FKBP15 Antibody - BSA Free

Product Information	
Unit Size	100 ul
Concentration	1.0 mg/ml
Storage	Store at 4C. Do not freeze.
Clonality	Polyclonal
Preservative	0.09% Sodium Azide
Isotype	IgG
Purity	Immunogen affinity purified
Buffer	Tris-Citrate/Phosphate (pH 7.0 - 8.0)

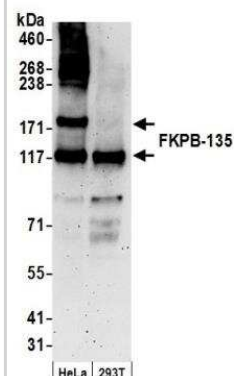
Product Description	
Host	Rabbit
Gene ID	23307
Gene Symbol	FKBP15
Species	Human
Immunogen	A synthetic peptide mapping to a region between residues 960 and 1020 of human FK506-binding protein 135 using the numbering given in TrEMBL entry Q9Y4D0 (GeneID 23307).

Product Application Details	
Applications	Western Blot, Immunoprecipitation
Recommended Dilutions	Western Blot 1:2000-1:10000, Immunoprecipitation 2 - 10 ug/mg of lysate
Application Notes	Western Blot and immunoprecipitation. Immunohistochemistry has not been tested. *The investigator should determine the optimal working dilution for a specific application.

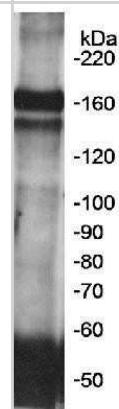


Images

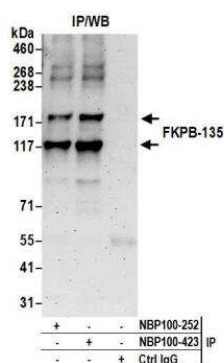
Western Blot: FKBP15 Antibody [NB100-423] - Detection of Human FKPB-135 by Western Blot. Samples: Whole cell lysate (50 ug) from HeLa and 293T cells prepared using NETN lysis buffer. Antibody: Affinity purified rabbit anti-FKPB-135 antibody NB100-423 used for WB at 0.1 ug/ml. Detection: Chemiluminescence with an exposure time of 3 minutes.



Western Blot: FKBP15 Antibody [NB100-423] - Detection of human FKBP-135 in Western Blot and immunoprecipitation, using NB100-423. Samples: HeLa nuclear extracts. Exposure times of (A) 25 minutes and (B) 10 minutes.



FKBP15 Antibody [NB100-423] - Detection of human FKPB-135 by western blot of immunoprecipitates. Samples: Whole cell lysate (0.5 or 1.0 mg per IP reaction; 20% of IP loaded) from HeLa cells prepared using NETN lysis buffer. Antibody: Affinity purified rabbit anti-FKPB-135 antibody NB100-423 used for IP at 6 ug per reaction. FKPB-135 was also immunoprecipitated by rabbit anti-FKPB-135 antibody NB100-252. For blotting immunoprecipitated FKPB-135, NB100-423 was used at 1 ug/ml. Detection: Chemiluminescence with an exposure time of 3 minutes.





Novus Biologicals USA

10730 E. Briarwood Avenue
Centennial, CO 80112
USA
Phone: 303.730.1950
Toll Free: 1.888.506.6887
Fax: 303.730.1966
nb-customerservice@bio-techne.com

Bio-Techne Canada

21 Canmotor Ave
Toronto, ON M8Z 4E6
Canada
Phone: 905.827.6400
Toll Free: 855.668.8722
Fax: 905.827.6402
canada.inquires@bio-techne.com

Bio-Techne Ltd

19 Barton Lane
Abingdon Science Park
Abingdon, OX14 3NB, United Kingdom
Phone: (44) (0) 1235 529449
Free Phone: 0800 37 34 15
Fax: (44) (0) 1235 533420
info.EMEA@bio-techne.com

General Contact Information

www.novusbio.com
Technical Support: nb-technical@bio-techne.com
Orders: nb-customerservice@bio-techne.com
General: novus@novusbio.com

Products Related to NB100-423

HAF008	Goat anti-Rabbit IgG Secondary Antibody [HRP]
NB7160	Goat anti-Rabbit IgG (H+L) Secondary Antibody [HRP]
NBP2-24891	Rabbit IgG Isotype Control
NBP1-82972PEP	FKBP15 Recombinant Protein Antigen

Limitations

This product is for research use only and is not approved for use in humans or in clinical diagnosis. Primary Antibodies are guaranteed for 1 year from date of receipt.

For more information on our 100% guarantee, please visit www.novusbio.com/guarantee

Earn gift cards/discounts by submitting a review: www.novusbio.com/reviews/submit/NB100-423

Earn gift cards/discounts by submitting a publication using this product:
www.novusbio.com/publications

