

Product Datasheet

KIFC1 Antibody - BSA Free

NB100-40844

Unit Size: 100 ul

Store at 4C. Do not freeze.

www.novusbio.com



technical@novusbio.com

Publications: 5

Protocols, Publications, Related Products, Reviews, Research Tools and Images at:
www.novusbio.com/NB100-40844

Updated 2/21/2025 v.20.1

Earn rewards for product
reviews and publications.

Submit a publication at www.novusbio.com/publications

Submit a review at www.novusbio.com/reviews/destination/NB100-40844



NB100-40844

KIFC1 Antibody - BSA Free

Product Information

Unit Size	100 ul
Concentration	1.0 mg/ml
Storage	Store at 4C. Do not freeze.
Clonality	Polyclonal
Preservative	0.09% Sodium Azide
Isotype	IgG
Purity	Immunogen affinity purified
Buffer	Tris-Citrate/Phosphate (pH 7.0 - 8.0)
Target Molecular Weight	74 kDa

Product Description

Host	Rabbit
Gene ID	3833
Gene Symbol	KIFC1
Species	Human, Rat
Reactivity Notes	Rat reactivity reported in scientific literature (PMID: 30804089).
Immunogen	The immunogen recognized by this antibody maps to a region between residue 625 and 673 of human Kinesin Family Member C1 (Mitotic Kinesin-Like Protein 2) using the numbering given in entry NP_002254.1 (GeneID 3833).

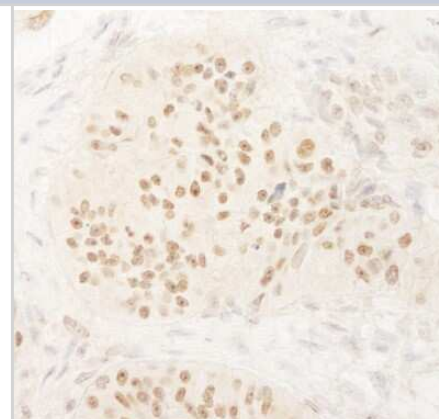
Product Application Details

Applications	Western Blot, Immunocytochemistry/ Immunofluorescence, Immunohistochemistry, Immunohistochemistry-Paraffin, Immunoprecipitation, Chromatin Immunoprecipitation (ChIP)
Recommended Dilutions	Western Blot, Immunohistochemistry 1:1000-1:5000, Immunocytochemistry/ Immunofluorescence, Immunoprecipitation 2-5 ug/mg lysate, Immunohistochemistry-Paraffin 1:1000-1:5000, Chromatin Immunoprecipitation (ChIP)
Application Notes	Epitope retrieval with Tris-EDTA pH9.0 is recommended for FFPE tissue sections. WB reactivity reported in (PMID: 28430595). Western Blot Not recommended. Chip, WB reactivity reported in (PMID: 24648347). Use in ICC/IF was reported in scientific literature (PMID: 30804089).

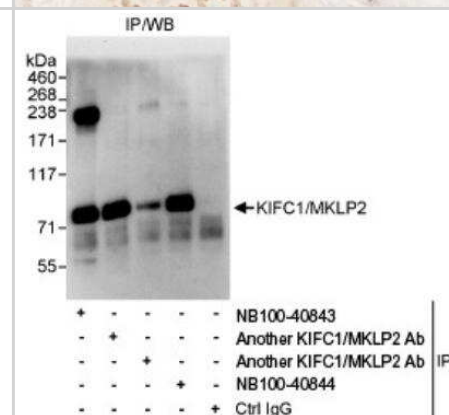


Images

Immunohistochemistry-Paraffin: KIFC1 Antibody [NB100-40844] - Section of human ovarian carcinoma. Antibody: Affinity purified rabbit anti- KIFC1/MKLP2 used at a dilution of 1:5,000 (0.2ug/ml). Detection: DAB



Immunoprecipitation: KIFC1 Antibody [NB100-40844] - Detection of Human KIFC1/MKLP2 on HeLa whole cell lysate using NB100-40844. KIFC1/MKLP2 was also immunoprecipitated by other rabbit anti-KIFC1/MKLP2 antibodies and NB100-40843.



Publications

Wei YL, Fan XJ, Lin XC et al. Kinesin-14 KIFC1 promotes acrosome formation and chromatin maturation during mouse spermiogenesis *Biochimica et biophysica acta. Molecular cell research* 2023-07-30 [PMID: 37524262] (IHC, Mouse)

Wei yL, Fan XJ, Diao yy et al. Kinesin-14 KIFC1 modulates spindle assembly and chromosome segregation in mouse spermatocytes *Experimental cell research* 2022-05-01 [PMID: 35259401]

PARVIN A, WEI B, HAO S Et al. KIFC1 overexpression promotes prostate cancer cell survival and proliferation in vitro by clustering of amplified centrosomes via interaction with Centrin 2 *BIOCELL* 2021-07-22 (WB, Human)

Muralidharan H, Baas PW. Mitotic Motor KIFC1 is an organizer of microtubules in the axon *J. Neurosci.* 2019-02-25 [PMID: 30804089] (ICC/IF, Rat)

She ZY, Pan MY, Tan FQ, Yang, WX. Minus end-directed kinesin-14 KIFC1 regulates the positioning and architecture of the Golgi apparatus. *Oncotarget.* 2017-05-30 [PMID: 28430595] (ICC/IF, WB, Human)



Novus Biologicals USA

10730 E. Briarwood Avenue
Centennial, CO 80112
USA
Phone: 303.730.1950
Toll Free: 1.888.506.6887
Fax: 303.730.1966
nb-customerservice@bio-techne.com

Bio-Techne Canada

21 Canmotor Ave
Toronto, ON M8Z 4E6
Canada
Phone: 905.827.6400
Toll Free: 855.668.8722
Fax: 905.827.6402
canada.inquires@bio-techne.com

Bio-Techne Ltd

19 Barton Lane
Abingdon Science Park
Abingdon, OX14 3NB, United Kingdom
Phone: (44) (0) 1235 529449
Free Phone: 0800 37 34 15
Fax: (44) (0) 1235 533420
info.EMEA@bio-techne.com

General Contact Information

www.novusbio.com
Technical Support: nb-technical@bio-techne.com
Orders: nb-customerservice@bio-techne.com
General: novus@novusbio.com

Products Related to NB100-40844

HAF008	Goat anti-Rabbit IgG Secondary Antibody [HRP]
NB7160	Goat anti-Rabbit IgG (H+L) Secondary Antibody [HRP]
NBP2-24891	Rabbit IgG Isotype Control
H00003833-P01-2ug	Recombinant Human KIFC1 GST (N-Term) Protein

Limitations

This product is for research use only and is not approved for use in humans or in clinical diagnosis. Primary Antibodies are guaranteed for 1 year from date of receipt.

For more information on our 100% guarantee, please visit www.novusbio.com/guarantee

Earn gift cards/discounts by submitting a review: www.novusbio.com/reviews/submit/NB100-40844

Earn gift cards/discounts by submitting a publication using this product:
www.novusbio.com/publications

