

Product Datasheet

TOP2B Antibody NB100-40842

Unit Size: 0.1 ml

Store at 4C. Do not freeze.

www.novusbio.com



technical@novusbio.com

Reviews: 1 Publications: 9

Protocols, Publications, Related Products, Reviews, Research Tools and Images at:
www.novusbio.com/NB100-40842

Updated 10/23/2024 v.20.1

**Earn rewards for product
reviews and publications.**

Submit a publication at www.novusbio.com/publications

Submit a review at www.novusbio.com/reviews/destination/NB100-40842



NB100-40842

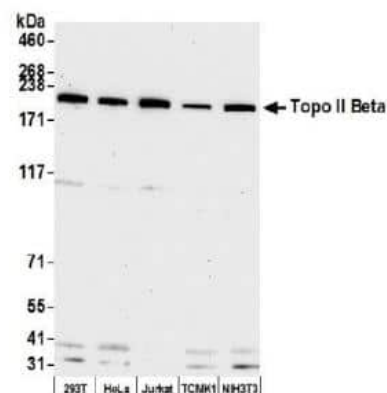
TOP2B Antibody

Product Information	
Unit Size	0.1 ml
Concentration	0.2 mg/ml
Storage	Store at 4C. Do not freeze.
Clonality	Polyclonal
Preservative	0.09% Sodium Azide
Isotype	IgG
Purity	Immunogen affinity purified
Buffer	TBS and 0.1% BSA
Target Molecular Weight	183 kDa
Product Description	
Host	Rabbit
Gene ID	7155
Gene Symbol	TOP2B
Species	Human, Mouse
Immunogen	The immunogen recognized by this antibody maps to a region between residue 1570 and the C-terminus (residue 1621) of human DNA Topoisomerase II Beta using the numbering given in entry NP_001059.2 (GeneID 7155).
Product Application Details	
Applications	Western Blot, Immunohistochemistry, Immunohistochemistry-Paraffin, Immunoprecipitation
Recommended Dilutions	Western Blot 1:2000-1:10000, Immunohistochemistry 1:200 - 1:1000, Immunoprecipitation 2-10 ug/mg lysate, Immunohistochemistry-Paraffin 1:200 - 1:1000
Application Notes	Epitope retrieval with citrate buffer pH 6.0 is recommended for FFPE tissue sections.

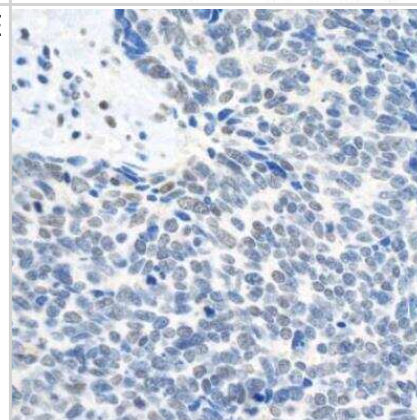


Images

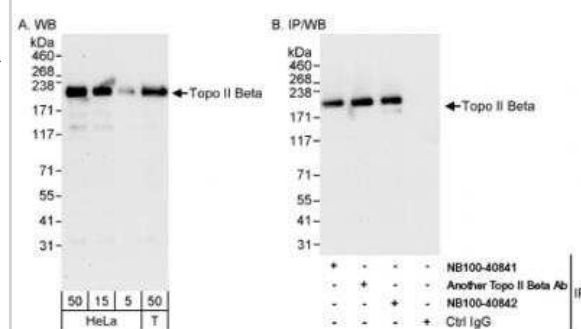
Western Blot: TOP2B Antibody [NB100-40842] - Whole cell lysate (50 ug) from HEK293T, HeLa, Jurkat, TCMK-1, and NIH 3T3 cells prepared using NETN lysis buffer. Antibody: Affinity purified rabbit anti- Topo II Beta antibody used for WB at 0.04 ug/ml. Detection: Chemiluminescence with an exposure time of 30 seconds



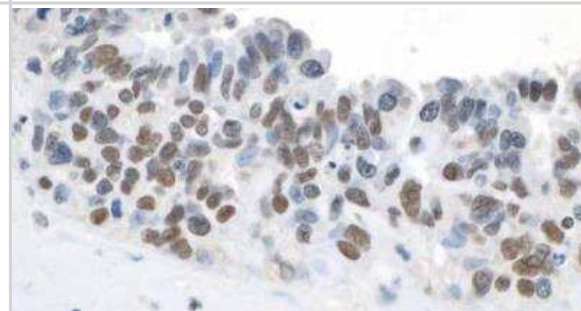
Immunohistochemistry-Paraffin: TOP2B Antibody [NB100-40842] - FFPE section of human small cell lung cancer. Antibody: Affinity purified rabbit anti-Topo II Beta used at a dilution of 1:1,000 (0.2ug/ml). Detection: DAB



Western Blot: TOP2B Antibody [NB100-40842] - Detection of Human Topo II Beta on HeLa whole cell lysate using NB100-40842. Topo II Beta was also immunoprecipitated by another rabbit anti-Topo II Beta antibody and NB100-40841.



Immunohistochemistry-Paraffin: TOP2B Antibody [NB100-40842] - Sample: FFPE section of human ovarian cancer. Antibody: Affinity purified rabbit anti-Topo II Beta used at a dilution of 1:1,000 (0.2ug/ml). Detection: DAB



Publications

Chatzinikolaou G, Stratigi K, Siametis A et al. XPF interacts with TOP2B for R-loop processing and DNA looping on actively transcribed genes *Science advances* 2023-11-10 [PMID: 37939182]

Najnin R, Al Mahmud M, Rahman M et al. ATM suppresses c-Myc overexpression in the mammary epithelium in response to estrogen *Cell Reports* 2023-01-01 [PMID: 36640339] (ICC/IF, Human)

Cortes-Ledesma F, Martinez-Garcia Pm Genome-wide prediction of topoisomerase II beta binding by architectural factors and chromatin accessibility *PLoS Comput Biol* 2021-01-19 [PMID: 33465072]

Sciascia N, Wu W, Zong D et Al. Suppressing proteasome mediated processing of topoisomerase II DNA-protein complexes preserves genome integrity *Elife* 2020-02-14 [PMID: 32057297] (WB, Mouse)

Alvarez-QuilOn A, TerrOn-Bautista J, Delgado-Sainz I et al. Endogenous topoisomerase II-mediated DNA breaks drive thymic cancer predisposition linked to ATM deficiency *Nat Commun* 2020-02-14 [PMID: 32060399] (IP, Mouse)

Chatzinikolaou G, Stratigi K, Agathangelou K ERCC1-XPF Interacts with Topoisomerase II beta to Facilitate the Repair of Activity-induced DNA Breaks *bioRxiv* 2020-01-01 (WB, Mouse)

Hedayati M, Haffner MC, Coulter JB et al. Androgen Deprivation Followed by Acute Androgen Stimulation Selectively Sensitizes AR-Positive Prostate Cancer Cells to Ionizing Radiation. *Clin Cancer Res* 2016-07-01 [PMID: 26831716]

Maxwell SS, Pelka GJ, Tam PP, El-Osta A. Chromatin context and ncRNA highlight targets of MeCP2 in brain. *RNA Biol* 2013-11-01 [PMID: 24270455] (Mouse)

Elliott SL, Crawford C, Mulligan E et al. Mitoxantrone in combination with an inhibitor of DNA-dependent protein kinase: a potential therapy for high risk B-cell chronic lymphocytic leukaemia. *Br J Haematol* 2011-01-01 [PMID: 21083655]





Novus Biologicals USA

10730 E. Briarwood Avenue
Centennial, CO 80112
USA
Phone: 303.730.1950
Toll Free: 1.888.506.6887
Fax: 303.730.1966
nb-customerservice@bio-techne.com

Bio-Techne Canada

21 Canmotor Ave
Toronto, ON M8Z 4E6
Canada
Phone: 905.827.6400
Toll Free: 855.668.8722
Fax: 905.827.6402
canada.inquires@bio-techne.com

Bio-Techne Ltd

19 Barton Lane
Abingdon Science Park
Abingdon, OX14 3NB, United Kingdom
Phone: (44) (0) 1235 529449
Free Phone: 0800 37 34 15
Fax: (44) (0) 1235 533420
info.EMEA@bio-techne.com

General Contact Information

www.novusbio.com
Technical Support: nb-technical@bio-techne.com
Orders: nb-customerservice@bio-techne.com
General: novus@novusbio.com

Products Related to NB100-40842

HAF008	Goat anti-Rabbit IgG Secondary Antibody [HRP]
NB7160	Goat anti-Rabbit IgG (H+L) Secondary Antibody [HRP]
NBP2-24891	Rabbit IgG Isotype Control
H00007155-Q01-10ug	Recombinant Human TOP2B GST (N-Term) Protein

Limitations

This product is for research use only and is not approved for use in humans or in clinical diagnosis. Primary Antibodies are guaranteed for 1 year from date of receipt.

For more information on our 100% guarantee, please visit www.novusbio.com/guarantee

Earn gift cards/discounts by submitting a review: www.novusbio.com/reviews/submit/NB100-40842

Earn gift cards/discounts by submitting a publication using this product:
www.novusbio.com/publications

