

# Product Datasheet

## Involucrin Antibody (SY5) - BSA Free NB100-2727

Unit Size: 0.1 mg

Store at 4C short term. Aliquot and store at -20C long term. Avoid freeze-thaw cycles.

[www.novusbio.com](http://www.novusbio.com)



[technical@novusbio.com](mailto:technical@novusbio.com)

**Reviews: 1 Publications: 3**

Protocols, Publications, Related Products, Reviews, Research Tools and Images at:  
[www.novusbio.com/NB100-2727](http://www.novusbio.com/NB100-2727)

Updated 9/9/2025 v.20.1

**Earn rewards for product  
reviews and publications.**

Submit a publication at [www.novusbio.com/publications](http://www.novusbio.com/publications)

Submit a review at [www.novusbio.com/reviews/destination/NB100-2727](http://www.novusbio.com/reviews/destination/NB100-2727)



**NB100-2727**

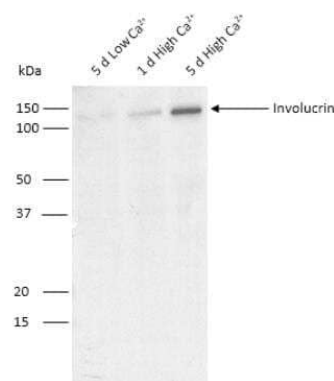
Involucrin Antibody (SY5) - BSA Free

Product Information	
Unit Size	0.1 mg
Concentration	1 mg/ml
Storage	Store at 4C short term. Aliquot and store at -20C long term. Avoid freeze-thaw cycles.
Clonality	Monoclonal
Clone	SY5
Preservative	0.02% Sodium Azide
Isotype	IgG1 Kappa
Purity	Protein A purified
Buffer	PBS
Target Molecular Weight	118 kDa
Product Description	
Description	Novus Biologicals Mouse Involucrin Antibody (SY5) - BSA Free (NB100-2727) is a monoclonal antibody validated for use in IHC, WB, Flow, ICC/IF and IP. Anti-Involucrin Antibody: Cited in 3 publications. All Novus Biologicals antibodies are covered by our 100% guarantee.
Host	Mouse
Gene ID	3713
Gene Symbol	IVL
Species	Human, Porcine, Canine, Primate
Reactivity Notes	There is weak reactivity with Canine, but it does not react with Mouse.
Immunogen	Purified involucrin from human keratinocytes.
Product Application Details	
Applications	Western Blot, Immunohistochemistry-Paraffin, Flow Cytometry, Immunocytochemistry/ Immunofluorescence, Immunohistochemistry, Immunoprecipitation, CyTOF-ready
Recommended Dilutions	Western Blot 1:100 - 1:2000, Flow Cytometry 0.5 - 1.0 ug/10 <sup>6</sup> cells, Immunohistochemistry 0.1-0.2 ug/ml, Immunocytochemistry/ Immunofluorescence 1 - 2 ug/ml, Immunoprecipitation 1:10 - 1:500, Immunohistochemistry-Paraffin 1:10-1:500, CyTOF-ready
Application Notes	Localized to upper spinous and granular layers in normal skin. IHC: Staining of formalin-fixed tissues is enhanced by digestion with trypsin or Protease XXV at 1mg/ml PBS for 5 min at 37 degrees Celsius. Note that enzyme digestion is better than citrate buffer based epitope unmasking. This antibody is CyTOF ready. Positive control(s): MCF-7 cells.

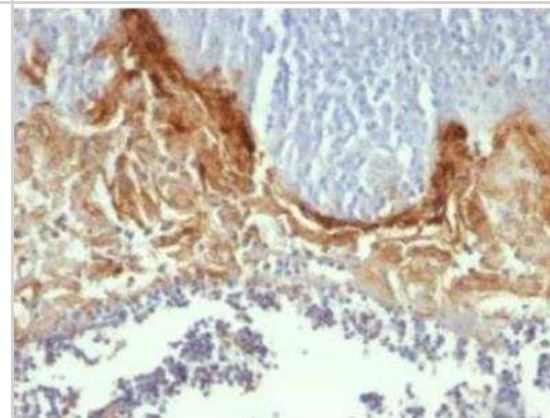


## Images

**Western Blot: Involucrin Antibody (SY5) [NB100-2727]** - Involucrin from primary human epidermal keratinocyte lysates grown in low calcium (0.07 mM) for 5 days or differentiated with high calcium (1.5 mM) for 1-5 days. Block in 5% nonfat dry milk in TBST incubated at RT for 1 hr, antibody 1:500 in TBST, overnight at 4C. Image from verified customer review.



**Immunohistochemistry-Paraffin: Involucrin Antibody (SY5) [NB100-2727]** - Staining of human Tonsil with Involucrin Monoclonal Antibody (SY5).



## Publications

Wu SY, Lai HT, Sanjib Banerjee N, Ma Z et Al. IDR-targeting compounds suppress HPV genome replication via disruption of phospho-BRD4 association with DNA damage response factors Mol Cell 2023-12-16 [PMID: 38103559]

Koskinen Holm C, Qu C Engineering a 3D In Vitro Model of Human Gingival Tissue Equivalent with Genipin/Cytochalasin D International journal of molecular sciences 2022-07-03 [PMID: 35806407] (IHC-P)

Details:  
Dilutions: 1:250

Shimoda H, Terazawa S, Hito S et al. Changes in ceramides and glucosylceramides in mouse skin and human epidermal equivalents by rice-derived glucosylceramide J Med Food 2012-12-01 [PMID: 23216108]



### **Novus Biologicals USA**

10730 E. Briarwood Avenue  
Centennial, CO 80112  
USA  
Phone: 303.730.1950  
Toll Free: 1.888.506.6887  
Fax: 303.730.1966  
nb-customerservice@bio-techne.com

### **Bio-Techne Canada**

21 Canmotor Ave  
Toronto, ON M8Z 4E6  
Canada  
Phone: 905.827.6400  
Toll Free: 855.668.8722  
Fax: 905.827.6402  
canada.inquires@bio-techne.com

### **Bio-Techne Ltd**

19 Barton Lane  
Abingdon Science Park  
Abingdon, OX14 3NB, United Kingdom  
Phone: (44) (0) 1235 529449  
Free Phone: 0800 37 34 15  
Fax: (44) (0) 1235 533420  
info.EMEA@bio-techne.com

### **General Contact Information**

www.novusbio.com  
Technical Support: nb-technical@bio-techne.com  
Orders: nb-customerservice@bio-techne.com  
General: novus@novusbio.com

### **Products Related to NB100-2727**

---

NB820-59465	MCF-7 Whole Cell Lysate
HAF007	Goat anti-Mouse IgG Secondary Antibody [HRP]
NB720-B	Rabbit anti-Mouse IgG (H+L) Secondary Antibody [Biotin]
NBP1-43319-0.5mg	Mouse IgG1 Kappa Isotype Control (P3.6.2.8.1)

---

### **Limitations**

This product is for research use only and is not approved for use in humans or in clinical diagnosis. Primary Antibodies are guaranteed for 1 year from date of receipt.

For more information on our 100% guarantee, please visit [www.novusbio.com/guarantee](http://www.novusbio.com/guarantee)

Earn gift cards/discounts by submitting a review: [www.novusbio.com/reviews/submit/NB100-2727](http://www.novusbio.com/reviews/submit/NB100-2727)

Earn gift cards/discounts by submitting a publication using this product:  
[www.novusbio.com/publications](http://www.novusbio.com/publications)

