

# Product Datasheet

## NG2/MCSP Antibody (LHM 2) [PerCP] NB100-2688PCP

Unit Size: 0.1 ml

Store at 4C in the dark.

[www.novusbio.com](http://www.novusbio.com)



[technical@novusbio.com](mailto:technical@novusbio.com)

Protocols, Publications, Related Products, Reviews, Research Tools and Images at:  
[www.novusbio.com/NB100-2688PCP](http://www.novusbio.com/NB100-2688PCP)

Updated 10/23/2024 v.20.1

Earn rewards for product  
reviews and publications.

Submit a publication at [www.novusbio.com/publications](http://www.novusbio.com/publications)

Submit a review at [www.novusbio.com/reviews/destination/NB100-2688PCP](http://www.novusbio.com/reviews/destination/NB100-2688PCP)



**NB100-2688PCP**

NG2/MCSP Antibody (LHM 2) [PerCP]

**Product Information**

<b>Unit Size</b>	0.1 ml
<b>Concentration</b>	Please see the vial label for concentration. If unlisted please contact technical services.
<b>Storage</b>	Store at 4C in the dark.
<b>Clonality</b>	Monoclonal
<b>Clone</b>	LHM 2
<b>Preservative</b>	0.05% Sodium Azide
<b>Isotype</b>	IgG1 Kappa
<b>Conjugate</b>	PerCP
<b>Purity</b>	Protein G purified
<b>Buffer</b>	PBS

**Product Description**

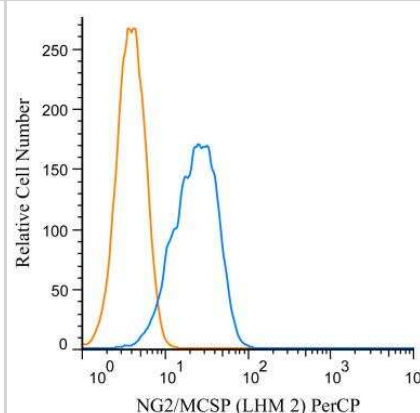
<b>Host</b>	Mouse
<b>Gene ID</b>	1464
<b>Gene Symbol</b>	CSPG4
<b>Species</b>	Human
<b>Immunogen</b>	A 375P cells crude extract

**Product Application Details**

<b>Applications</b>	Western Blot, Flow Cytometry, Flow (Cell Surface), Immunocytochemistry/Immunofluorescence, Immunohistochemistry, Immunohistochemistry-Frozen, Immunohistochemistry-Paraffin, Immunoprecipitation, Knockout Validated
<b>Recommended Dilutions</b>	Western Blot, Flow Cytometry, Immunohistochemistry, Immunocytochemistry/Immunofluorescence, Immunoprecipitation, Immunohistochemistry-Paraffin, Immunohistochemistry-Frozen, Flow (Cell Surface), Knockout Validated
<b>Application Notes</b>	Optimal dilution of this antibody should be experimentally determined.

**Images**

Flow Cytometry: NG2/MCSP Antibody (LHM 2) [PerCP] [NB100-2688PCP] - A cell surface stain was performed on U87MG cells with NG2/MCSP antibody (LHM 2) NB100-2688PCP (blue) and a matched isotype control NBP2-27287PCP (orange). Cells were incubated in an antibody dilution of 2.5 ug/mL for 20 minutes at room temperature. Both antibodies were conjugated to Peridinin-Chlorophyll-Protein complex.





### **Novus Biologicals USA**

10730 E. Briarwood Avenue  
Centennial, CO 80112  
USA  
Phone: 303.730.1950  
Toll Free: 1.888.506.6887  
Fax: 303.730.1966  
nb-customerservice@bio-techne.com

### **Bio-Techne Canada**

21 Canmotor Ave  
Toronto, ON M8Z 4E6  
Canada  
Phone: 905.827.6400  
Toll Free: 855.668.8722  
Fax: 905.827.6402  
canada.inquires@bio-techne.com

### **Bio-Techne Ltd**

19 Barton Lane  
Abingdon Science Park  
Abingdon, OX14 3NB, United Kingdom  
Phone: (44) (0) 1235 529449  
Free Phone: 0800 37 34 15  
Fax: (44) (0) 1235 533420  
info.EMEA@bio-techne.com

### **General Contact Information**

www.novusbio.com  
Technical Support: nb-technical@bio-techne.com  
Orders: nb-customerservice@bio-techne.com  
General: novus@novusbio.com

### **Products Related to NB100-2688PCP**

---

NBP1-43319PCP-0.5ml	Mouse IgG1 Kappa Isotype Control (P3.6.2.8.1) [PerCP]
NB100-2688PE	NG2/MCSP Antibody (LHM 2) [PE]
NBP1-94154PEP	NG2/MCSP Recombinant Protein Antigen
233-FB-025	FGF basic/FGF2/bFGF [Unconjugated]

---

### **Limitations**

This product is for research use only and is not approved for use in humans or in clinical diagnosis. Primary Antibodies are guaranteed for 1 year from date of receipt.

For more information on our 100% guarantee, please visit [www.novusbio.com/guarantee](http://www.novusbio.com/guarantee)

Earn gift cards/discounts by submitting a review: [www.novusbio.com/reviews/submit/NB100-2688PCP](http://www.novusbio.com/reviews/submit/NB100-2688PCP)

Earn gift cards/discounts by submitting a publication using this product:  
[www.novusbio.com/publications](http://www.novusbio.com/publications)

