

# Product Datasheet

## INCENP Antibody NB100-2286

Unit Size: 0.1 ml

Store at 4C. Do not freeze.

[www.novusbio.com](http://www.novusbio.com)



[technical@novusbio.com](mailto:technical@novusbio.com)

Protocols, Publications, Related Products, Reviews, Research Tools and Images at:  
[www.novusbio.com/NB100-2286](http://www.novusbio.com/NB100-2286)

Updated 6/13/2024 v.20.1

Earn rewards for product  
reviews and publications.

Submit a publication at [www.novusbio.com/publications](http://www.novusbio.com/publications)

Submit a review at [www.novusbio.com/reviews/destination/NB100-2286](http://www.novusbio.com/reviews/destination/NB100-2286)



**NB100-2286****INCENP Antibody****Product Information**

<b>Unit Size</b>	0.1 ml
<b>Concentration</b>	1 mg/ml
<b>Storage</b>	Store at 4C. Do not freeze.
<b>Clonality</b>	Polyclonal
<b>Preservative</b>	0.09% Sodium Azide
<b>Isotype</b>	IgG
<b>Purity</b>	Immunogen affinity purified
<b>Buffer</b>	TBS and 0.1% BSA

**Product Description**

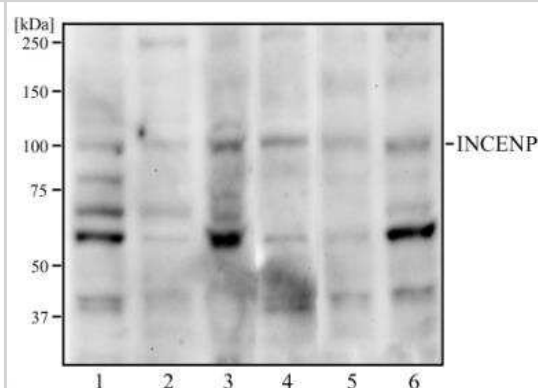
<b>Host</b>	Rabbit
<b>Gene ID</b>	3619
<b>Gene Symbol</b>	INCENP
<b>Species</b>	Human
<b>Reactivity Notes</b>	Human.
<b>Immunogen</b>	The epitope recognized by this antibody maps to a region between residue 325 and 400 of human INCENP using the numbering given in entry Q9NQS7 (GeneID 3619).

**Product Application Details**

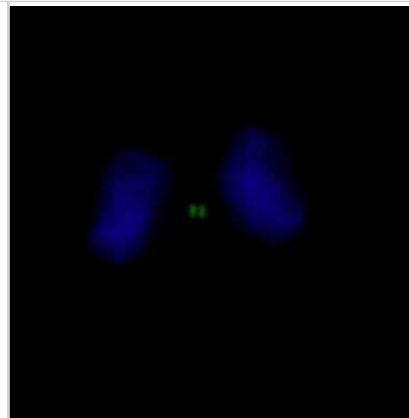
<b>Applications</b>	Western Blot, Immunocytochemistry/ Immunofluorescence
<b>Recommended Dilutions</b>	Western Blot 2 ug/ml, Immunocytochemistry/ Immunofluorescence 0.006-0.01 ug/ml
<b>Application Notes</b>	This INCENP antibody is useful for Immunocytochemistry/Immunofluorescence. With formaldehyde-fixed cells permeabilization with Triton-X 100 is recommended. Likely to work with frozen sections.

**Images**

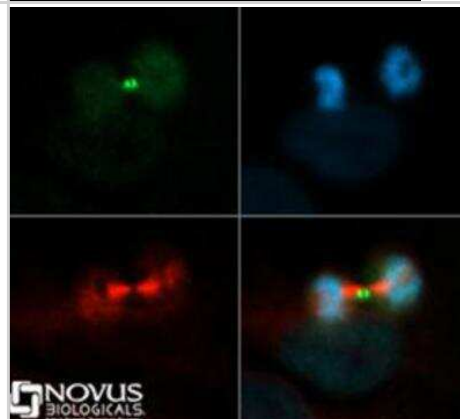
Western Blot: INCENP Antibody [NB100-2286] - Western blot analysis of HeLa (1), A431 (2), MCF7 (3), HEK293 (4), Neuro2a (5), and Raw 264.7 (6) cell lysate using INCENP antibody at a concentration of 2 ug/ml.



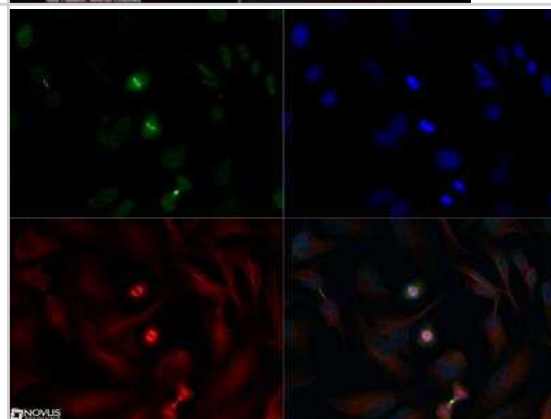
Immunocytochemistry/Immunofluorescence: INCENP Antibody [NB100-2286] - Detection of Human INCENP by Immunocytochemistry. Sample: NBF-fixed asynchronous HeLa cells. Antibody: Affinity purified rabbit anti-INCENP (NB100-2286) used at a dilution of 1:250. Detection: Goat anti-rabbit IgG (h& l)-FITC used at a dilution of 1:100.



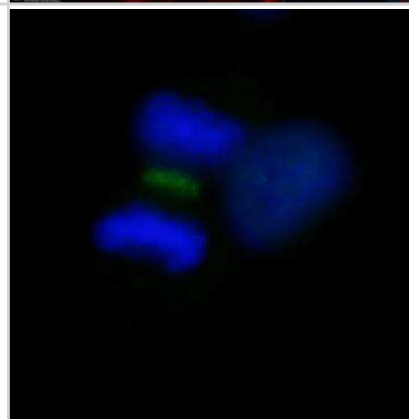
Immunocytochemistry/Immunofluorescence: INCENP Antibody [NB100-2286] - INCENP antibody was tested in HeLa cells with Dylight 488 (green). Nuclei and alpha-tubulin were counterstained with DAPI (blue) and Dylight 550 (red).



Immunocytochemistry/Immunofluorescence: INCENP Antibody [NB100-2286] - INCENP antibody was tested in HeLa cells with Dylight 488 (green). Nuclei and alpha-tubulin were counterstained with DAPI (blue) and Dylight 550 (red). A concentration of 0.006 ug/ml was used. Image objective 40x.



Immunocytochemistry/Immunofluorescence: INCENP Antibody [NB100-2286] - Detection of Human INCENP by Immunocytochemistry. Sample: NBF-fixed asynchronous HeLa cells. Antibody: Affinity purified rabbit anti-INCENP (NB100-2806) used at a dilution of 1:250. Detection: Goat anti-rabbit IgG (h& l)-FITC used at a dilution of 1:100.





### **Novus Biologicals USA**

10730 E. Briarwood Avenue  
Centennial, CO 80112  
USA  
Phone: 303.730.1950  
Toll Free: 1.888.506.6887  
Fax: 303.730.1966  
nb-customerservice@bio-techne.com

### **Bio-Techne Canada**

21 Canmotor Ave  
Toronto, ON M8Z 4E6  
Canada  
Phone: 905.827.6400  
Toll Free: 855.668.8722  
Fax: 905.827.6402  
canada.inquires@bio-techne.com

### **Bio-Techne Ltd**

19 Barton Lane  
Abingdon Science Park  
Abingdon, OX14 3NB, United Kingdom  
Phone: (44) (0) 1235 529449  
Free Phone: 0800 37 34 15  
Fax: (44) (0) 1235 533420  
info.EMEA@bio-techne.com

### **General Contact Information**

[www.novusbio.com](http://www.novusbio.com)  
Technical Support: nb-technical@bio-techne.com  
Orders: nb-customerservice@bio-techne.com  
General: novus@novusbio.com

### **Limitations**

This product is for research use only and is not approved for use in humans or in clinical diagnosis. Primary Antibodies are guaranteed for 1 year from date of receipt.

For more information on our 100% guarantee, please visit [www.novusbio.com/guarantee](http://www.novusbio.com/guarantee)

Earn gift cards/discounts by submitting a review: [www.novusbio.com/reviews/submit/NB100-2286](http://www.novusbio.com/reviews/submit/NB100-2286)

Earn gift cards/discounts by submitting a publication using this product:  
[www.novusbio.com/publications](http://www.novusbio.com/publications)

