

# Product Datasheet

## BRCA1 [p Ser1457] Antibody

### NB100-227

Unit Size: 100 ul

Store at 4C. Do not freeze.

[www.novusbio.com](http://www.novusbio.com)



[technical@novusbio.com](mailto:technical@novusbio.com)

#### Publications: 2

Protocols, Publications, Related Products, Reviews, Research Tools and Images at:  
[www.novusbio.com/NB100-227](http://www.novusbio.com/NB100-227)

Updated 1/24/2021 v.20.1

Earn rewards for product  
reviews and publications.

Submit a publication at [www.novusbio.com/publications](http://www.novusbio.com/publications)

Submit a review at [www.novusbio.com/reviews/destination/NB100-227](http://www.novusbio.com/reviews/destination/NB100-227)



**NB100-227****BRCA1 [p Ser1457] Antibody**

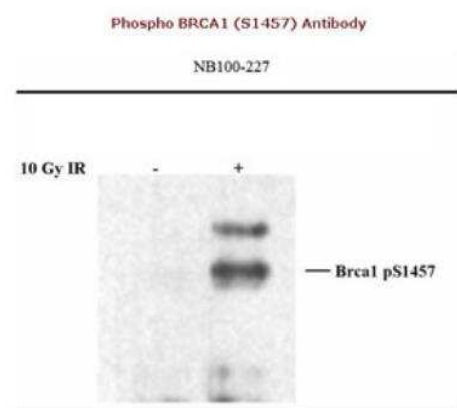
<b>Product Information</b>	
<b>Unit Size</b>	100 ul
<b>Concentration</b>	1.0 mg/ml
<b>Storage</b>	Store at 4C. Do not freeze.
<b>Clonality</b>	Polyclonal
<b>Preservative</b>	0.09% Sodium Azide
<b>Isotype</b>	IgG
<b>Purity</b>	Immunogen affinity purified
<b>Buffer</b>	Tris-Citrate/Phosphate (pH 7.0 - 8.0)

<b>Product Description</b>	
<b>Host</b>	Rabbit
<b>Gene ID</b>	672
<b>Gene Symbol</b>	BRCA1
<b>Species</b>	Human
<b>Immunogen</b>	Immunogen for this antibody was a phosphorylated synthetic peptide, which represented a portion of human Breast Cancer Gene 1 (GeneID 672) around serine 1457 according to the numbering given in entry NP_009225.1.

<b>Product Application Details</b>	
<b>Applications</b>	Western Blot, Immunoprecipitation
<b>Recommended Dilutions</b>	Western Blot 1:1000-1:10000, Immunoprecipitation 2.5 ug/mg of lysate
<b>Application Notes</b>	Suggested working dilutions: * Western Blot 1:1,000-1:10,000 Immunocytochemistry ND Immunohistochemistry ND *The investigator should determine the optimal dilution for a specific application. This antibody can be used for Western Blot.

**Images**

Western Blot: BRCA1 [p Ser1457] Antibody [NB100-227] - Whole Cell Lysate (25ug/lane) from HELA cells treated with 10 Gy IR or untreated



## Publications

Rusin M, Zajkowicz A, Butkiewicz D. Resveratrol induces senescence-like growth inhibition of U-2 OS cells associated with the instability of telomeric DNA and upregulation of BRCA1. Mech Ageing Dev 2009-08-01 [PMID: 19559722] (WB, Human)

Bekker-Jensen, S, Lukas, C, Kitagawa, R, Meler, F, Kastan, M B, Bartek, J, Lukas, J. Spatial organization of the mammalian genome surveillance machinery in response to DNA str breaks, . 173, 195-206. 2006-01-01 [PMID: 16618811]



### Novus Biologicals USA

10730 E. Briarwood Avenue  
Centennial, CO 80112  
USA  
Phone: 303.730.1950  
Toll Free: 1.888.506.6887  
Fax: 303.730.1966  
novus@novusbio.com

### Bio-Techne Canada

21 Canmotor Ave  
Toronto, ON M8Z 4E6  
Canada  
Phone: 905.827.6400  
Toll Free: 855.668.8722  
Fax: 905.827.6402  
canada.inquires@bio-techne.com

### Bio-Techne Ltd

19 Barton Lane  
Abingdon Science Park  
Abingdon, OX14 3NB, United Kingdom  
Phone: (44) (0) 1235 529449  
Free Phone: 0800 37 34 15  
Fax: (44) (0) 1235 533420  
info.EMEA@bio-techne.com

### General Contact Information

www.novusbio.com  
Technical Support: technical@novusbio.com  
Orders: orders@novusbio.com  
General: novus@novusbio.com

### Limitations

This product is for research use only and is not approved for use in humans or in clinical diagnosis. Primary Antibodies are guaranteed for 1 year from date of receipt.

For more information on our 100% guarantee, please visit [www.novusbio.com/guarantee](http://www.novusbio.com/guarantee)

Earn gift cards/discounts by submitting a review: [www.novusbio.com/reviews/submit/NB100-227](http://www.novusbio.com/reviews/submit/NB100-227)

Earn gift cards/discounts by submitting a publication using this product:  
[www.novusbio.com/publications](http://www.novusbio.com/publications)



