

Product Datasheet

XLF Antibody **NB100-2258**

Unit Size: 0.1 ml

Store at 4C. Do not freeze.

www.novusbio.com



technical@novusbio.com

Publications: 4

Protocols, Publications, Related Products, Reviews, Research Tools and Images at:
www.novusbio.com/NB100-2258

Updated 5/6/2020 v.20.1

**Earn rewards for product
reviews and publications.**

Submit a publication at www.novusbio.com/publications

Submit a review at www.novusbio.com/reviews/destination/NB100-2258



NB100-2258

XLF Antibody

Product Information	
Unit Size	0.1 ml
Concentration	0.2 mg/ml
Storage	Store at 4C. Do not freeze.
Clonality	Polyclonal
Preservative	0.09% Sodium Azide
Isotype	IgG
Purity	Immunogen affinity purified
Buffer	TBS and 0.1% BSA

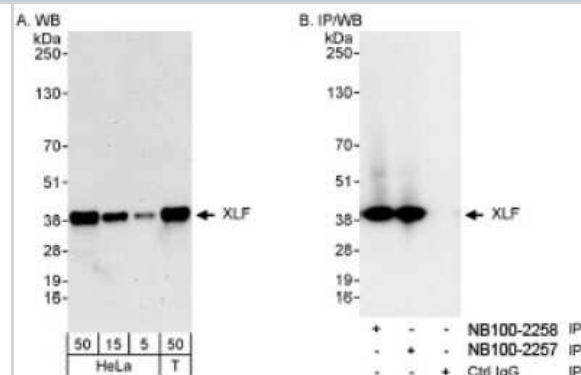
Product Description	
Host	Rabbit
Gene ID	79840
Gene Symbol	NHEJ1
Species	Human
Immunogen	The immunogen recognized by this antibody maps to a region between residue 250 and the C-terminus (residue 299) of human XRCC4-Like Factor using the numbering given in entry NP_079058.1 (GenelD 79840).

Product Application Details	
Applications	Western Blot, Immunohistochemistry, Immunohistochemistry-Paraffin, Immunoprecipitation
Recommended Dilutions	Western Blot 1:2000 -1:10000, Immunohistochemistry 1:100 - 1:500, Immunoprecipitation 2 -5 ug/mg lysate, Immunohistochemistry-Paraffin 1:100 - 1:500
Application Notes	Epitope retrieval with citrate buffer pH 6.0 is recommended for FFPE tissue sections.

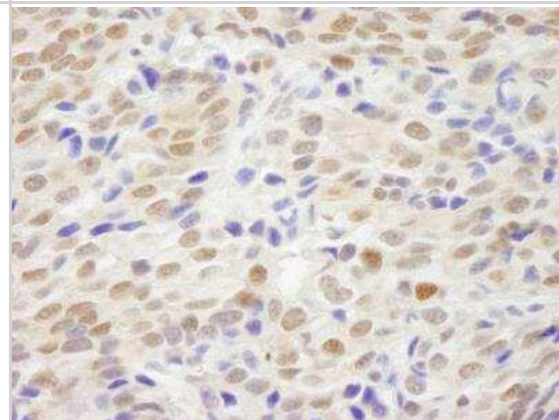


Images

Western Blot: XLF Antibody [NB100-2258] - Detection of Human XLF on HeLa whole cell lysate using NB100-2258. XLF was also immunoprecipitated using rabbit anti-XLF antibody NB100-2257.



Immunohistochemistry-Paraffin: XLF Antibody [NB100-2258] - Section of human breast carcinoma. Antibody: Affinity purified rabbit anti- XLF used at a dilution of 1:200 (1ug/ml). Detection: DAB



Publications

Warmerdam DO, Alonso-de Vega I, Wiegant WW et al. PHF6 promotes non-homologous end joining and G2 checkpoint recovery EMBO Rep. 2019-11-29 [PMID: 31782600] (Human)

Wu PY, Frit P, Malivert L et al. Interplay between Cernunnos-XLF and nonhomologous end-joining proteins at DNA ends in the cell. J Biol Chem 2007-11-01 [PMID: 17720816]

Zha S, Alt FW, Cheng HL et al. Defective DNA repair and increased genomic instability in Cernunnos-XLF-deficient murine ES cells. Proc Natl Acad Sci U S A 2007-03-01 [PMID: 17360556]

Dutrannoy V, Demuth I, Baumann U et al. Clinical variability and novel mutations in the NHEJ1 gene in patients with a Nijmegen breakage syndrome-like phenotype. Hum Mutat 2010-09-01 [PMID: 20597108] (WB, Human)



Novus Biologicals USA

10730 E. Briarwood Avenue
Centennial, CO 80112
USA
Phone: 303.730.1950
Toll Free: 1.888.506.6887
Fax: 303.730.1966
novus@novusbio.com

Bio-Techne Canada

21 Canmotor Ave
Toronto, ON M8Z 4E6
Canada
Phone: 905.827.6400
Toll Free: 855.668.8722
Fax: 905.827.6402
canada.inquires@bio-techne.com

Bio-Techne Ltd

19 Barton Lane
Abingdon Science Park
Abingdon, OX14 3NB, United Kingdom
Phone: (44) (0) 1235 529449
Free Phone: 0800 37 34 15
Fax: (44) (0) 1235 533420
info.EMEA@bio-techne.com

General Contact Information

www.novusbio.com
Technical Support: technical@novusbio.com
Orders: orders@novusbio.com
General: novus@novusbio.com

Products Related to NB100-2258

NBL1-13638	XLf Overexpression Lysate
HAF008	Goat anti-Rabbit IgG Secondary Antibody [HRP]
NB7160	Goat anti-Rabbit IgG (H+L) Secondary Antibody [HRP]
NBP2-24891	Rabbit IgG Isotype Control

Limitations

This product is for research use only and is not approved for use in humans or in clinical diagnosis. Primary Antibodies are guaranteed for 1 year from date of receipt.

For more information on our 100% guarantee, please visit www.novusbio.com/guarantee

Earn gift cards/discounts by submitting a review: www.novusbio.com/reviews/submit/NB100-2258

Earn gift cards/discounts by submitting a publication using this product:
www.novusbio.com/publications

