

# Product Datasheet

## MAML3 Antibody - BSA Free

### NB100-2128

Unit Size: 100 ul

Store at 4C. Do not freeze.

[www.novusbio.com](http://www.novusbio.com)



[technical@novusbio.com](mailto:technical@novusbio.com)

Protocols, Publications, Related Products, Reviews, Research Tools and Images at:  
[www.novusbio.com/NB100-2128](http://www.novusbio.com/NB100-2128)

Updated 9/9/2025 v.20.1

Earn rewards for product  
reviews and publications.

Submit a publication at [www.novusbio.com/publications](http://www.novusbio.com/publications)

Submit a review at [www.novusbio.com/reviews/destination/NB100-2128](http://www.novusbio.com/reviews/destination/NB100-2128)



**NB100-2128**

MAML3 Antibody - BSA Free

**Product Information**

<b>Unit Size</b>	100 ul
<b>Concentration</b>	1.0 mg/ml
<b>Storage</b>	Store at 4C. Do not freeze.
<b>Clonality</b>	Polyclonal
<b>Preservative</b>	0.09% Sodium Azide
<b>Isotype</b>	IgG
<b>Purity</b>	Immunogen affinity purified
<b>Buffer</b>	Tris-Citrate/Phosphate (pH 7.0 - 8.0)

**Product Description**

<b>Description</b>	Novus Biologicals Rabbit MAML3 Antibody - BSA Free (NB100-2128) is a polyclonal antibody validated for use in IHC, WB and IP. All Novus Biologicals antibodies are covered by our 100% guarantee.
<b>Host</b>	Rabbit
<b>Gene ID</b>	55534
<b>Gene Symbol</b>	MAML3
<b>Species</b>	Human
<b>Immunogen</b>	The immunogen recognized by this antibody maps to a region between residue 150 and 200 of human Mastermind-Like 3 using the numbering given in entry NP_061187.2 (GeneID 55534).

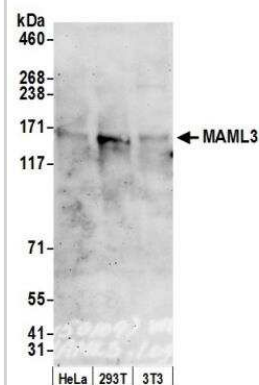
**Product Application Details**

<b>Applications</b>	Western Blot, Immunohistochemistry-Paraffin, Immunohistochemistry, Immunoprecipitation
<b>Recommended Dilutions</b>	Western Blot 1:2000 - 1:10000, Immunohistochemistry, Immunoprecipitation 2-10 ug/mg of lysate, Immunohistochemistry-Paraffin 1:500 - 1:2000
<b>Application Notes</b>	Epitope retrieval with Tris-EDTA pH9.0 is recommended for FFPE tissue sections.

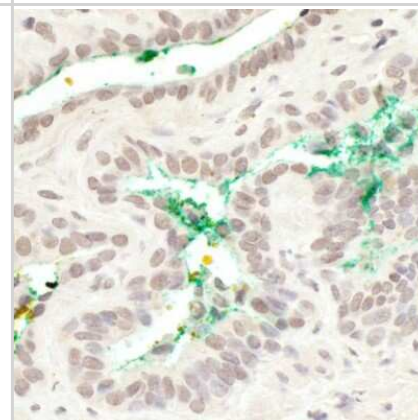


## Images

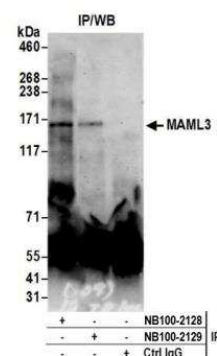
**Western Blot: MAML3 Antibody [NB100-2128] - Detection of Human and Mouse MAML3 by Western Blot.** Samples: Whole cell lysate (50 ug) from HeLa, 293T, and mouse NIH3T3 cells prepared using NETN lysis buffer. Antibody: Affinity purified rabbit anti-MAML3 antibody NB100-2128 used for WB at 0.1 ug/ml. Detection: Chemiluminescence with an exposure time of 3 minutes.



**Immunohistochemistry-Paraffin: MAML3 Antibody [NB100-2128] - Sample: FFPE section of human prostate carcinoma. Antibody: Affinity purified rabbit anti-MAML3 (NB100-2128). Detection: DAB**



**Immunoprecipitation: MAML3 Antibody [NB100-2128] - Detection of human MAML3 by western blot of immunoprecipitates.** Samples: Whole cell lysate (0.5 or 1.0 mg per IP reaction; 20% of IP loaded) from HEK293T cells prepared using NETN lysis buffer. Antibodies: Affinity purified rabbit anti-MAML3 antibody NB100-2128 used for IP at 6 ug per reaction. MAML3 was also immunoprecipitated by rabbit anti-MAML3 antibody NB100-2129. For blotting immunoprecipitated MAML3, NB100-2128 was used at 1 ug/ml. Detection: Chemiluminescence with an exposure time of 3 minutes.





### **Novus Biologicals USA**

10730 E. Briarwood Avenue  
Centennial, CO 80112  
USA  
Phone: 303.730.1950  
Toll Free: 1.888.506.6887  
Fax: 303.730.1966  
nb-customerservice@bio-techne.com

### **Bio-Techne Canada**

21 Canmotor Ave  
Toronto, ON M8Z 4E6  
Canada  
Phone: 905.827.6400  
Toll Free: 855.668.8722  
Fax: 905.827.6402  
canada.inquires@bio-techne.com

### **Bio-Techne Ltd**

19 Barton Lane  
Abingdon Science Park  
Abingdon, OX14 3NB, United Kingdom  
Phone: (44) (0) 1235 529449  
Free Phone: 0800 37 34 15  
Fax: (44) (0) 1235 533420  
info.EMEA@bio-techne.com

### **General Contact Information**

www.novusbio.com  
Technical Support: nb-technical@bio-  
techne.com  
Orders: nb-customerservice@bio-techne.com  
General: novus@novusbio.com

### **Products Related to NB100-2128**

---

HAF008	Goat anti-Rabbit IgG Secondary Antibody [HRP]
NB7160	Goat anti-Rabbit IgG (H+L) Secondary Antibody [HRP]
NBP2-24891	Rabbit IgG Isotype Control
NBP1-86674PEP	MAML3 Recombinant Protein Antigen

---

### **Limitations**

This product is for research use only and is not approved for use in humans or in clinical diagnosis. Primary Antibodies are guaranteed for 1 year from date of receipt.

For more information on our 100% guarantee, please visit [www.novusbio.com/guarantee](http://www.novusbio.com/guarantee)

Earn gift cards/discounts by submitting a review: [www.novusbio.com/reviews/submit/NB100-2128](http://www.novusbio.com/reviews/submit/NB100-2128)

Earn gift cards/discounts by submitting a publication using this product:  
[www.novusbio.com/publications](http://www.novusbio.com/publications)

