

Product Datasheet

Amloride-sensitive cation channel 3 Antibody NB100-2067

Unit Size: 0.05 ml

Store at 4C short term. Aliquot and store at -20C long term. Avoid freeze-thaw cycles.

www.novusbio.com



technical@novusbio.com

Protocols, Publications, Related Products, Reviews, Research Tools and Images at:
www.novusbio.com/NB100-2067

Updated 3/30/2022 v.20.1

Earn rewards for product
reviews and publications.

Submit a publication at www.novusbio.com/publications

Submit a review at www.novusbio.com/reviews/destination/NB100-2067



NB100-2067**Amiloride-sensitive cation channel 3 Antibody**

Product Information	
Unit Size	0.05 ml
Concentration	Please see the vial label for concentration. If unlisted please contact technical services.
Storage	Store at 4C short term. Aliquot and store at -20C long term. Avoid freeze-thaw cycles.
Clonality	Polyclonal
Preservative	0.05% Sodium Azide
Isotype	IgG
Purity	Immunogen affinity purified
Buffer	PBS (pH 7.4) and 1.0% BSA

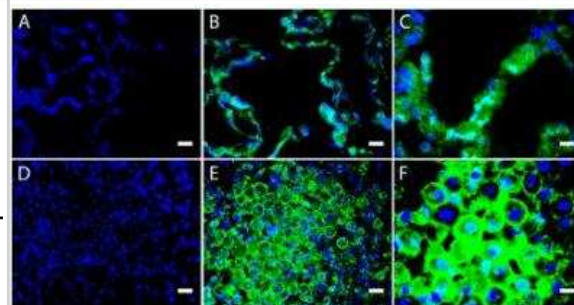
Product Description	
Host	Guinea Pig
Gene ID	9311
Gene Symbol	ASIC3
Species	Rat
Reactivity Notes	Reacts with Rat. Not yet tested in other species.
Specificity/Sensitivity	ASIC3
Immunogen	Synthetic peptide: TASLDPDDFDPEPSDPLGSP, corresponding to amino acids 285-304 of extracellular domain of Rat ASIC3.

Product Application Details	
Applications	Immunocytochemistry/Immunofluorescence, Immunohistochemistry, Immunohistochemistry-Frozen
Recommended Dilutions	Immunohistochemistry 1:10-1:500, Immunocytochemistry/Immunofluorescence 1:100, Immunohistochemistry-Frozen 1:10-1:500

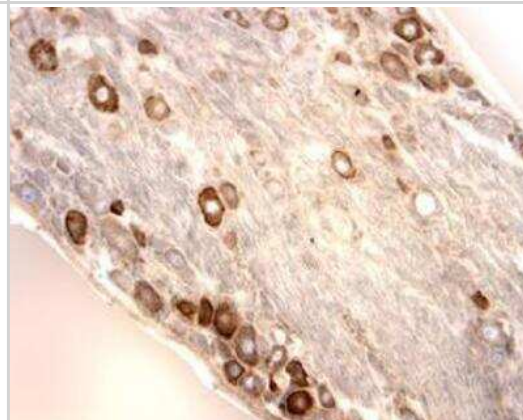


Images

Immunocytochemistry/Immunofluorescence: Amiloride-sensitive cation channel 3 Antibody [NB100-2067] - ASIC3 expression in normal and CF human lung tissues by immunofluorescence microscopy. Normal (top panels A-C) and CF human lung sections (bottom panels D-F) were labeled with a specific antibody against ASIC3 (green channel) and the DNA-selective Hoechst dye (blue channel). A and D, normal and CF human lung sections imaged following incubation with the mixture of anti-ASIC3 antibody and immunopeptide. Shown are normal (B) and CF (E) alveolar structures at a small magnification. ASIC3 expression was detected in both types I and II alveolar cells. Shown are normal (C) and CF (F) alveolar structures at a large magnification. Scale bars equal 10 μ m in A, B, D, and E and 20 μ m in C and F.



Immunohistochemistry: Amiloride-sensitive cation channel 3 Antibody [NB100-2067] - ASIC3 labeling is done on cryostat sections of rat DRG using HRP-DAB detection (brown color).





Novus Biologicals USA

10730 E. Briarwood Avenue
Centennial, CO 80112
USA
Phone: 303.730.1950
Toll Free: 1.888.506.6887
Fax: 303.730.1966
novus@novusbio.com

Bio-Techne Canada

21 Canmotor Ave
Toronto, ON M8Z 4E6
Canada
Phone: 905.827.6400
Toll Free: 855.668.8722
Fax: 905.827.6402
canada.inquires@bio-techne.com

Bio-Techne Ltd

19 Barton Lane
Abingdon Science Park
Abingdon, OX14 3NB, United Kingdom
Phone: (44) (0) 1235 529449
Free Phone: 0800 37 34 15
Fax: (44) (0) 1235 533420
info.EMEA@bio-techne.com

General Contact Information

www.novusbio.com
Technical Support: technical@novusbio.com
Orders: orders@novusbio.com
General: novus@novusbio.com

Limitations

This product is for research use only and is not approved for use in humans or in clinical diagnosis. Primary Antibodies are guaranteed for 1 year from date of receipt.

For more information on our 100% guarantee, please visit www.novusbio.com/guarantee

Earn gift cards/discounts by submitting a review: www.novusbio.com/reviews/submit/NB100-2067

Earn gift cards/discounts by submitting a publication using this product:
www.novusbio.com/publications

