

# Product Datasheet

## Aldolase A Antibody [Biotin]

### NB100-2003-0.1mg

Unit Size: 0.1 mg

Store lyophilized antibody at 4C in the dark. Aliquot reconstituted liquid and store at -20C. Avoid freeze-thaw cycles.

[www.novusbio.com](http://www.novusbio.com)



[technical@novusbio.com](mailto:technical@novusbio.com)

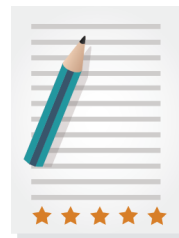
Protocols, Publications, Related Products, Reviews, Research Tools and Images at:  
[www.novusbio.com/NB100-2003](http://www.novusbio.com/NB100-2003)

Updated 1/12/2023 v.20.1

Earn rewards for product reviews and publications.

Submit a publication at [www.novusbio.com/publications](http://www.novusbio.com/publications)

Submit a review at [www.novusbio.com/reviews/destination/NB100-2003](http://www.novusbio.com/reviews/destination/NB100-2003)



**NB100-2003-0.1mg**

Aldolase A Antibody [Biotin]

Product Information	
Unit Size	0.1 mg
Concentration	LYOPH mg/ml
Storage	Store lyophilized antibody at 4C in the dark. Aliquot reconstituted liquid and store at -20C. Avoid freeze-thaw cycles.
Clonality	Polyclonal
Preservative	0.01% Sodium Azide
Reconstitution Instructions	Reconstitute with 100 ul deionized water (or equivalent)
Isotype	IgG
Conjugate	Biotin
Purity	Whole Antiserum
Buffer	Lyophilized from 0.02 M Potassium Phosphate, 0.15 M Sodium Chloride, pH 7.2, 10 mg/mL Bovine Serum Albumin (BSA) - Immunoglobulin and Protease free

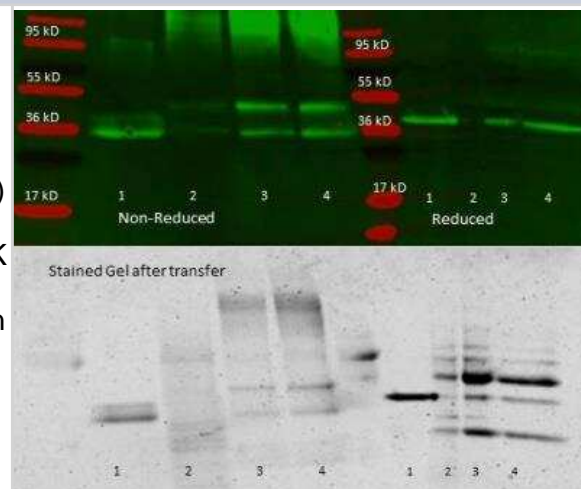
Product Description	
Host	Goat
Gene ID	226
Gene Symbol	ALDOA
Species	Human, Mouse, Rabbit
Reactivity Notes	Human, Rabbit and Mouse. Not yet tested in other species.
Immunogen	Aldolase A Antibody [Rabbit Muscle] (Uniprot: P00883)
Notes	Store vial at 4C prior to restoration. For extended storage aliquot contents and freeze at -20C or below. Avoid cycles of freezing and thawing. Centrifuge product if not completely clear after standing at room temperature. This product is stable for several weeks at 4C as an undiluted liquid. Dilute only prior to immediate use.

Product Application Details	
Applications	Western Blot, ELISA, Immunoprecipitation
Recommended Dilutions	Western Blot 1:500-1:5000, ELISA 1:5000-1:20000, Immunoprecipitation 1:100
Application Notes	This antibody has been assayed against 1.0 ug of Aldolase A in a standard capture ELISA using Peroxidase Conjugated Streptavidin and ABTS (2,2'-azino-bis-[3-ethylbenthiiazoline-6-sulfonic acid]) as a substrate for 30 minutes at room temperature. A working dilution of 1:4,000 to 1:16,000 of the reconstitution concentration is suggested for this product.

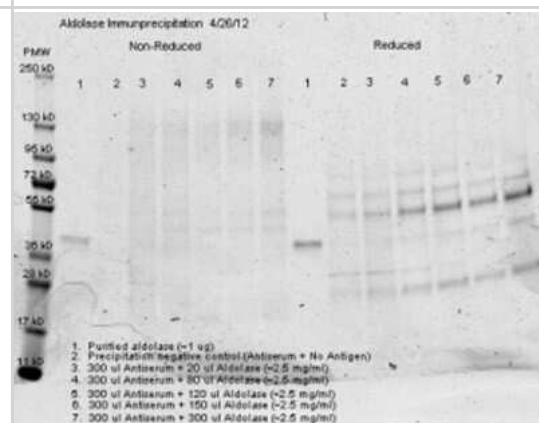


## Images

Western Blot: Aldolase A Antibody [Biotin] [NB100-2003] - 300 ul aliquots of whole anti-aldolase antiserum were used to precipitate purified aldolase and precipitates with controls were compared by SDS-PAGE and Western blot. Samples shown are: 1. Purified aldolase 2. 300 ul antiserum, no antigen (neg control) 3. 300 ul antiserum with 100 ul aldolase (2.5 mg/ml) 4. 300 ul antiserum with 200 ul aldolase (2.5 mg/ml) For precipitation, 300 ul of antiserum and an equal volume of aldolase antigen in PBS was incubated 24 hrs at 4C, centrifuged 6 minutes at 13K RPM, washed once with PBS, centrifuged and dissolved in 60 ul 0.1 N NaOH. 90 ul of PBS added, the sample was divided in 2 portions, and an equal volume of reducing (+4% BME) or non-reducing 2X sample buffer was added. The reduced samples were boiled for five minutes, and all samples were run at 140 V for 45 minutes on a 4-20% tris/glycine gradient gel. Gel was stained, de-stained and imaged(see attached) using standard protocols.



Western Blot: Aldolase A Antibody [Biotin] [NB100-2003] - Immunoprecipitation was performed with 300 ul of anti aldolase antiserum and an equal volume of varied amounts (diluted from a stock solution of ~2.5 ug/ml) of purified aldolase in PBS. Precipitation of aldolase was confirmed by comparison of increasing amounts of antigen with the control protein by SDS PAGE and observation of a 40-45 kD MW band corresponding to Aldolase.





### **Novus Biologicals USA**

10730 E. Briarwood Avenue  
Centennial, CO 80112  
USA

Phone: 303.730.1950  
Toll Free: 1.888.506.6887  
Fax: 303.730.1966  
novus@novusbio.com

### **Bio-Techne Canada**

21 Canmotor Ave  
Toronto, ON M8Z 4E6  
Canada

Phone: 905.827.6400  
Toll Free: 855.668.8722  
Fax: 905.827.6402  
canada.inquires@bio-techne.com

### **Bio-Techne Ltd**

19 Barton Lane  
Abingdon Science Park  
Abingdon, OX14 3NB, United Kingdom  
Phone: (44) (0) 1235 529449  
Free Phone: 0800 37 34 15  
Fax: (44) (0) 1235 533420  
info.EMEA@bio-techne.com

### **General Contact Information**

www.novusbio.com  
Technical Support: technical@novusbio.com  
Orders: orders@novusbio.com  
General: novus@novusbio.com

### **Limitations**

This product is for research use only and is not approved for use in humans or in clinical diagnosis. Primary Antibodies are guaranteed for 1 year from date of receipt.

For more information on our 100% guarantee, please visit [www.novusbio.com/guarantee](http://www.novusbio.com/guarantee)

Earn gift cards/discounts by submitting a review: [www.novusbio.com/reviews/submit/NB100-2003](http://www.novusbio.com/reviews/submit/NB100-2003)

Earn gift cards/discounts by submitting a publication using this product:  
[www.novusbio.com/publications](http://www.novusbio.com/publications)

