

Product Datasheet

Mitofilin Antibody - BSA Free NB100-1919

Unit Size: 0.1 ml

Aliquot and store at -20C or -80C. Avoid freeze-thaw cycles.

www.novusbio.com



technical@novusbio.com

Reviews: 3 Publications: 17

Protocols, Publications, Related Products, Reviews, Research Tools and Images at:
www.novusbio.com/NB100-1919

Updated 9/9/2025 v.20.1

**Earn rewards for product
reviews and publications.**

Submit a publication at www.novusbio.com/publications

Submit a review at www.novusbio.com/reviews/destination/NB100-1919



NB100-1919

Mitofilin Antibody - BSA Free

Product Information

Unit Size	0.1 ml
Concentration	This product is unpurified. The exact concentration of antibody is not quantifiable.
Storage	Aliquot and store at -20C or -80C. Avoid freeze-thaw cycles.
Clonality	Polyclonal
Preservative	0.05% Sodium Azide
Isotype	IgG
Purity	Unpurified
Buffer	Whole antisera

Product Description

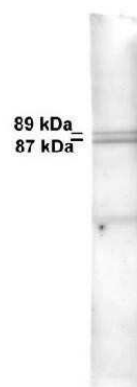
Description	Novus Biologicals Rabbit Mitofilin Antibody - BSA Free (NB100-1919) is a polyclonal antibody validated for use in IHC, WB, ICC/IF and IP. Anti-Mitofilin Antibody: Cited in 17 publications. All Novus Biologicals antibodies are covered by our 100% guarantee.
Host	Rabbit
Gene ID	10989
Gene Symbol	IMMT
Species	Human, Mouse, Rat, Canine, Feline, Primate
Reactivity Notes	Use in Mouse reported in scientific literature (PMID:33761951). Rat reactivity reported in scientific literature (PMID: 26729625)
Marker	Mitochondria Marker
Immunogen	Whole human recombinant Mitofilin [UniProt# Q16891]

Product Application Details

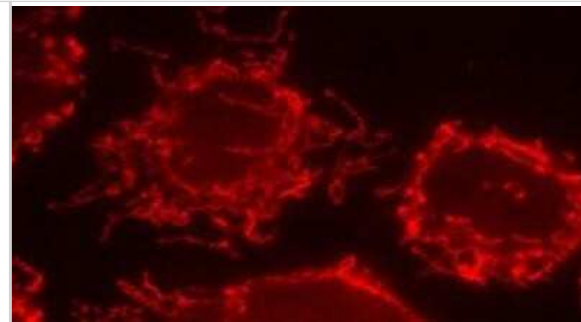
Applications	Western Blot, Immunohistochemistry-Paraffin, Immunocytochemistry/Immunofluorescence, Immunohistochemistry, Immunoprecipitation
Recommended Dilutions	Western Blot 1:2000, Immunohistochemistry 1:200-1:500, Immunocytochemistry/Immunofluorescence 1:500, Immunoprecipitation, Immunohistochemistry-Paraffin 1:200-1:500
Application Notes	This Mitofilin antibody is useful for Immunocytochemistry/Immunofluorescence and Western Blot, where two bands can be seen at approximately 87-90 kDa.

Images

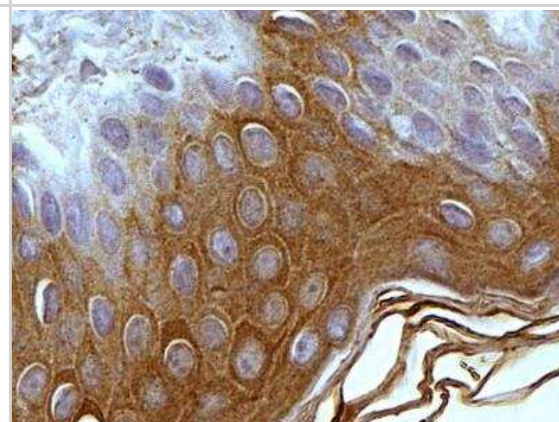
Western Blot: Mitofilin Antibody [NB100-1919] - Western blot of dog testis. Total protein extract 1:2000 dilution of antibody.



Immunocytochemistry/Immunofluorescence: Mitofilin Antibody [NB100-1919] - HeLa cells with antibody 1:500 dilution labeling mitochondria.



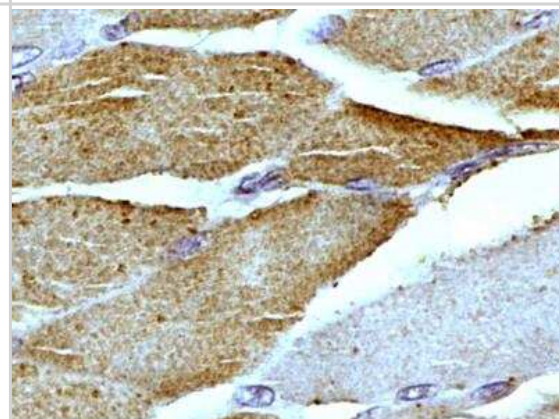
Immunohistochemistry-Paraffin: Mitofilin Antibody [NB100-1919] - IHC-P detection of Mitofilin/Mitochondrial inner membrane protein in a section of normal human skin using Mitofilin antibody at 1:200 dilution. The representative image shows a specific and expected granular staining of Mitofilin in the keratinocytes as well as the other cells of epidermal layer with no staining in basal cells. [60X Magnification]



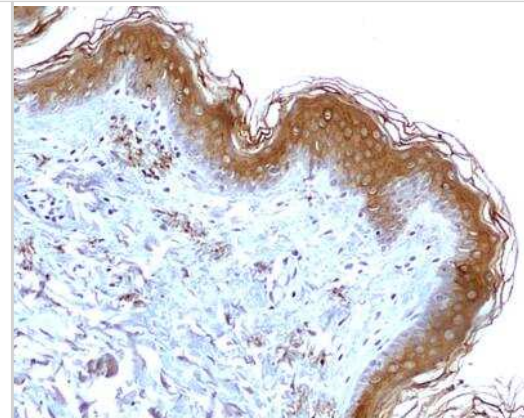
Western Blot: Mitofilin Antibody [NB100-1919] - COA7 pathological variants are import-defective. HEK293 cells that transiently expressed wild type or mutant COA7^{HIS} were solubilized, and the affinity purification of COA7^{HIS} was performed. The samples were analyzed by reducing and non-reducing SDS-PAGE and Western blot. Load: 3%. Eluate: 100%. Image collected and cropped by CiteAb from the following publication (<https://onlinelibrary.wiley.com/doi/10.15252/emmm.201809561>), licensed under a CC-BY license.



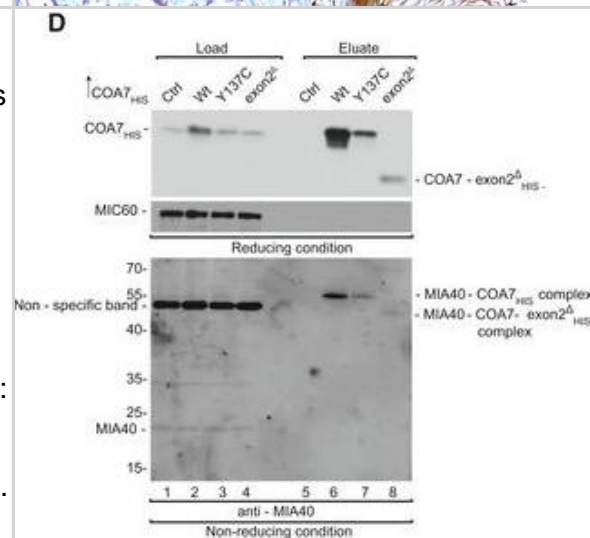
Immunohistochemistry-Paraffin: Mitofilin Antibody [NB100-1919] - IHC-P analysis of Mitofilin/Mitochondrial inner membrane protein in a transverse section of normal human skeletal muscle using Mitofilin antibody at 1:200 dilution. The myocytes showed an expected and very specific granular staining in the cytoplasm. [10X Magnification]



Immunohistochemistry-Paraffin: Mitofilin Antibody [NB100-1919] - IHC-P detection of Mitofilin/Mitochondrial inner membrane protein in a section of normal human skin using Mitofilin antibody at 1:200 dilution. Specific cytoplasmic positivity of Mitofilin was observed in the keratinocytes as well as other cells of the epidermal layer except for basal cells and dermal connective tissue. [10X Magnification]



Western Blot: Mitofilin Antibody [NB100-1919] - COA7 pathological variants are import defective. A schematic representation of wild-type & mutant COA7. B. Cellular protein extracts were isolated from HEK293 cells that were transfected with a plasmid that encoded wild-type or mutant COA7. The samples were analyzed by reducing SDS-PAGE & Western blot. C. Cellular fractions were prepared from HEK293 cells that were transfected with a plasmid that encoded wild-type or mutant COA7. The fractions were analyzed by reducing SDS-PAGE & Western blot. T, total; C, cytosol; M, mitochondria. D. HEK293 cells that transiently expressed wild-type or mutant COA7^{HIS} were solubilized, & the affinity purification of COA7^{HIS} was performed. The samples were analyzed by reducing & non-reducing SDS-PAGE & Western blot. Load: 3%. Eluate: 100%. E. Equal amounts of wild-type & mutant radiolabeled [³⁵S]COA7 precursors were imported into mitochondria isolated from HEK293 cells. The samples were analyzed by reducing SDS-PAGE & autoradiography. The results of three biological replicates were analyzed, quantified, & normalized to wild-type COA7 at 45 min. The data are expressed as a mean ± SEM (n = 3). IAA, iodoacetamide. Source data are available online for this figure. Image collected & cropped by CiteAb from the following publication (<https://pubmed.ncbi.nlm.nih.gov/30885959>), licensed under a CC-BY license. Not internally tested by Novus Biologicals.



Publications

Chojnacka KJ, Elancheliyan P, Mussulini BHM et al. Ovarian carcinoma immunoreactive antigen-like protein 2 (OCIAD2) is a novel complex III-specific assembly factor in mitochondria *Molecular biology of the cell* 2022-04-01 [PMID: 35080992]

Abudu YP, Shrestha BK, Zhang W et al. SAMM50 acts with p62 in piecemeal basal- and OXPHOS-induced mitophagy of SAM and MICOS components *The Journal of cell biology* 2021-08-02 [PMID: 34037656]

Naia L, Pinho CM, Dentoni G et al. Neuronal cell-based high-throughput screen for enhancers of mitochondrial function reveals luteolin as a modulator of mitochondria-endoplasmic reticulum coupling *BMC biology* 2021-03-24 [PMID: 33761951] (WB, Mouse)

Qiu X, Jiang S, Xiao Y, et al. SOX2-dependent expression of dihydroorotate dehydrogenase regulates oral squamous cell carcinoma cell proliferation *International journal of oral science* 2021-01-29 [PMID: 33510132] (WB, Human)

Suh BK, Lee SA, Park C, et al. Schizophrenia-associated dysbindin modulates axonal mitochondrial movement in cooperation with p150glued *Molecular brain* 2021-01-18 [PMID: 33461576] (WB, Mouse)

Yoshida T, Das NA, Carpenter AJ et al. Minocycline reverses IL-17A/TRAF3IP2-mediated p38 MAPK/NF-kappaB/iNOS/NO-dependent cardiomyocyte contractile depression and death *Cell. Signal.* 2020-06-15 [PMID: 32553549] (WB, Mouse)

Gomez RC, Wawro P, Lis P et al. Membrane association but not identity is required for LRRK2 activation and phosphorylation of Rab GTPases *J. Cell Biol.* 2019-10-17 [PMID: 31624137]

Mohanraj K, Wasilewski M, Beninca C et al. Inhibition of proteasome rescues a pathogenic variant of respiratory chain assembly factor COA7 *EMBO Mol Med* 2019-03-18 [PMID: 30885959] (WB, Human)

Vukotic M, Nolte H, Konig T et al. Acylglycerol Kinase Mutated in Sengers Syndrome Is a Subunit of the TIM22 Protein Translocase in Mitochondria. *Mol Cell* 2017-07-14 [PMID: 28712724] (Human)

Wrobel L, Sokol AM, Chojnacka M, Chacinska A The presence of disulfide bonds reveals an evolutionarily conserved mechanism involved in mitochondrial protein translocase assembly. *Sci Rep* 2016-06-06 [PMID: 27265872] (WB)

Diokmetzidou A, Soumaka E, Kloukina I et al. Desmin and aB-crystallin interplay in maintenance of mitochondrial homeostasis and cardiomyocyte survival. *J. Cell. Sci.* 2016-08-26 [PMID: 27566162] (WB)

Nguyen NT, Now H, Kim WJ et al. Ubiquitin-like modifier FAT10 attenuates RIG-I mediated antiviral signaling by segregating activated RIG-I from its signaling platform *Sci Rep* 2016-03-21 [PMID: 26996158] (WB, Human)

More publications at <http://www.novusbio.com/NB100-1919>





Novus Biologicals USA

10730 E. Briarwood Avenue
Centennial, CO 80112
USA
Phone: 303.730.1950
Toll Free: 1.888.506.6887
Fax: 303.730.1966
nb-customerservice@bio-techne.com

Bio-Techne Canada

21 Canmotor Ave
Toronto, ON M8Z 4E6
Canada
Phone: 905.827.6400
Toll Free: 855.668.8722
Fax: 905.827.6402
canada.inquires@bio-techne.com

Bio-Techne Ltd

19 Barton Lane
Abingdon Science Park
Abingdon, OX14 3NB, United Kingdom
Phone: (44) (0) 1235 529449
Free Phone: 0800 37 34 15
Fax: (44) (0) 1235 533420
info.EMEA@bio-techne.com

General Contact Information

www.novusbio.com
Technical Support: nb-technical@bio-techne.com
Orders: nb-customerservice@bio-techne.com
General: novus@novusbio.com

Products Related to NB100-1919

NBL1-11979	Mitofilin Overexpression Lysate
HAF008	Goat anti-Rabbit IgG Secondary Antibody [HRP]
NB7160	Goat anti-Rabbit IgG (H+L) Secondary Antibody [HRP]
NBP2-24891	Rabbit IgG Isotype Control

Limitations

This product is for research use only and is not approved for use in humans or in clinical diagnosis. Primary Antibodies are guaranteed for 1 year from date of receipt.

For more information on our 100% guarantee, please visit www.novusbio.com/guarantee

Earn gift cards/discounts by submitting a review: www.novusbio.com/reviews/submit/NB100-1919

Earn gift cards/discounts by submitting a publication using this product:
www.novusbio.com/publications

