

Product Datasheet

pan Cadherin Antibody (CH-19)

NB100-1907

Unit Size: 0.1 ml

Store at 4C short term. Aliquot and store at -20C long term. Avoid freeze-thaw cycles.

www.novusbio.com



technical@novusbio.com

Publications: 4

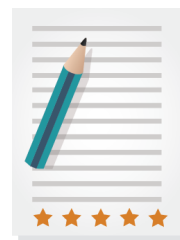
Protocols, Publications, Related Products, Reviews, Research Tools and Images at:
www.novusbio.com/NB100-1907

Updated 12/25/2024 v.20.1

Earn rewards for product
reviews and publications.

Submit a publication at www.novusbio.com/publications

Submit a review at www.novusbio.com/reviews/destination/NB100-1907



NB100-1907

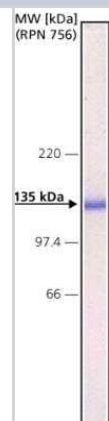
pan Cadherin Antibody (CH-19)

Product Information	
Unit Size	0.1 ml
Concentration	This product is unpurified. The exact concentration of antibody is not quantifiable.
Storage	Store at 4C short term. Aliquot and store at -20C long term. Avoid freeze-thaw cycles.
Clonality	Monoclonal
Clone	CH-19
Preservative	0.09% Sodium Azide
Isotype	IgG1
Purity	Unpurified
Buffer	Ascites
Target Molecular Weight	135 kDa
Product Description	
Host	Mouse
Gene ID	999
Gene Symbol	CDH1
Species	Human, Mouse, Rat, Porcine, Bovine, Canine, Chicken, Feline, Guinea Pig, Goat, Hamster, Rabbit, Sheep, Xenopus
Reactivity Notes	Please note that this antibody is reactive to Mouse and derived from the same host, Mouse. Additional Mouse on Mouse blocking steps may be required for IHC and ICC experiments. Please contact Technical Support for more information.
Marker	Plasma Membrane Marker
Specificity/Sensitivity	Monoclonal Anti-Pan Cadherin antibody reacts extensively with all known members of the cadherin famil
Immunogen	Synthetic peptide corresponding to the C-terminal amino acids of chicken N-Cadherin with an extra N-terminal lysine residue (24 amino acids) coupled to KLH.
Product Application Details	
Applications	Western Blot, Simple Western, Immunocytochemistry/ Immunofluorescence, Immunohistochemistry, Immunohistochemistry-Paraffin, Microarray
Recommended Dilutions	Western Blot 1:100-1:2000, Simple Western, Immunohistochemistry 1:10-1:500, Immunocytochemistry/ Immunofluorescence 1:500, Immunohistochemistry-Paraffin 1:500, Microarray
Application Notes	The antibody reacts using frozen sections, protease-digested, formalin-fixed paraffin-embedded, Bouin's-fixed and acetone-fixed tissue sections. Simple Western reported by an internal validation. Separated by Size-Jess/Wes, Sally Sue/Peggy Sue, antibody dilution of 1:1000; matrix was 12-230 kDa.

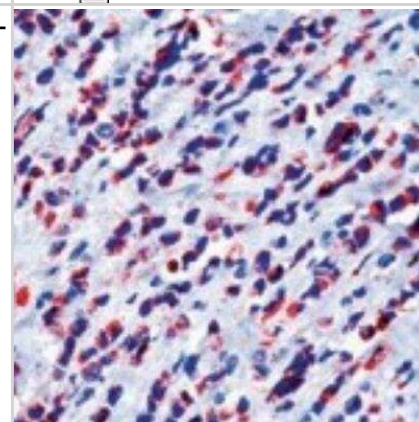


Images

Western Blot: pan Cadherin Antibody (CH-19) [NB100-1907] - Analysis of pan Cadherin Antibody (CH-19) in Madin Darby Bovine Kidney (MDBK) extract.



Immunohistochemistry-Paraffin: pan Cadherin Antibody (CH-19) [NB100-1907] - Analysis of pan Cadherin formalin-fixed paraffin embedded human breast carcinoma.



Publications

Zeitz MJ, Calhoun PJ, James CC et al. Dynamic UTR Usage Regulates Alternative Translation to Modulate Gap Junction Formation during Stress and Aging Cell Rep 2019-05-28 [PMID: 31141695] (ICC/IF, Mouse)

Sroubek J, Krishnan Y, McDonald TV. Sequence and structure-specific elements of HERG mRNA determine channel synthesis and trafficking efficiency. FASEB J. 2013-08-01 [PMID: 23608144] (WB, Human)

Krishnan Y, Zheng R, Walsh C, Tang Y, McDonald TV. Partially dominant mutant channel defect corresponding with intermediate LQT2 phenotype. Pacing Clin Electrophysiol;35(1):3-16. 2012-01-01 [PMID: 21951015] (ICC/IF, Mouse)

Orthmann-Murphy JL, Salsano E, Abrams CK et al. Hereditary spastic paraplegia is a novel phenotype for GJA12/GJC2 mutations. Brain;132(Pt 2):426-38. 2009-02-01 [PMID: 19056803]



Novus Biologicals USA

10730 E. Briarwood Avenue
Centennial, CO 80112
USA
Phone: 303.730.1950
Toll Free: 1.888.506.6887
Fax: 303.730.1966
nb-customerservice@bio-techne.com

Bio-Techne Canada

21 Canmotor Ave
Toronto, ON M8Z 4E6
Canada
Phone: 905.827.6400
Toll Free: 855.668.8722
Fax: 905.827.6402
canada.inquires@bio-techne.com

Bio-Techne Ltd

19 Barton Lane
Abingdon Science Park
Abingdon, OX14 3NB, United Kingdom
Phone: (44) (0) 1235 529449
Free Phone: 0800 37 34 15
Fax: (44) (0) 1235 533420
info.EMEA@bio-techne.com

General Contact Information

www.novusbio.com
Technical Support: nb-technical@bio-techne.com
Orders: nb-customerservice@bio-techne.com
General: novus@novusbio.com

Limitations

This product is for research use only and is not approved for use in humans or in clinical diagnosis. Primary Antibodies are guaranteed for 1 year from date of receipt.

For more information on our 100% guarantee, please visit www.novusbio.com/guarantee

Earn gift cards/discounts by submitting a review: www.novusbio.com/reviews/submit/NB100-1907

Earn gift cards/discounts by submitting a publication using this product:
www.novusbio.com/publications

