

Product Datasheet

Serpin I2 Antibody NB100-1782

Unit Size: 0.1 mg

Store at -20C. Avoid freeze-thaw cycles.

www.novusbio.com



technical@novusbio.com

Publications: 1

Protocols, Publications, Related Products, Reviews, Research Tools and Images at:
www.novusbio.com/NB100-1782

Updated 9/9/2025 v.20.1

Earn rewards for product
reviews and publications.

Submit a publication at www.novusbio.com/publications

Submit a review at www.novusbio.com/reviews/destination/NB100-1782



NB100-1782**Serpin I2 Antibody**

Product Information	
Unit Size	0.1 mg
Concentration	0.5 mg/ml
Storage	Store at -20C. Avoid freeze-thaw cycles.
Clonality	Polyclonal
Preservative	0.02% Sodium Azide
Isotype	IgG
Purity	Immunogen affinity purified
Buffer	Tris saline (20 mM Tris pH 7.3, 150 mM NaCl), 0.5% BSA

Product Description	
Description	Novus Biologicals Goat Serpin I2 Antibody (NB100-1782) is a polyclonal antibody validated for use in IHC, WB and ELISA. Anti-Serpin I2 Antibody: Cited in 1 publication. All Novus Biologicals antibodies are covered by our 100% guarantee.
Host	Goat
Gene ID	5276
Gene Symbol	SERPINI2
Species	Human
Specificity/Sensitivity	This antibody is expected to recognise both reported isoforms (NP_006208.1; NP_001012303.1).
Immunogen	Peptide with sequence C-KGDWKQKFRKEDTQ corresponding to internal region according to NP_001012303.1.

Product Application Details	
Applications	Western Blot, Immunohistochemistry-Paraffin, Immunohistochemistry, Peptide ELISA
Recommended Dilutions	Western Blot 0.3 - 1 ug/mL, Immunohistochemistry 3 ug/mL, Immunohistochemistry-Paraffin 3 ug/mL, Peptide ELISA Detection limit 1:64000
Application Notes	WB: Approx. 40 kDa band observed in human pancreas lysates (calculated MW of 46.1 kDa band according to NP_006208.1 and 47.4 kDa band according to NP_001012303.1). IHC-P: Human pancreas show cytoplasmic staining of acinar cells and of rare cells in the islets of langerhans.

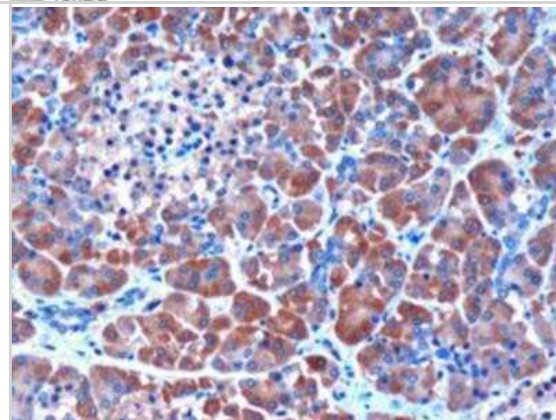


Images

Western Blot: Serpin I2 Antibody [NB100-1782] - Staining of Human Pancreas lysate with antibody at 0.3 ug/mL (35 ug protein in RIPA buffer). Detected by chemiluminescence.

250kDa
150kDa
100kDa
75kDa
50kDa
37kDa
25kDa
20kDa
15kDa
10kDa

Immunohistochemistry-Paraffin: Serpin I2 Antibody [NB100-1782] - Staining of paraffin embedded Human Pancreas. Antibody at 3 ug/mL. Microwaved antigen retrieval with citrate buffer pH 6, HRP-staining.



Publications

Ozaki K, Nagata M, Suzuki M et al. Isolation and characterization of a novel human pancreas-specific gene, pancpin, that is down-regulated in pancreatic cancer cells. *Genes Chromosomes Cancer* 1998-07-01 [PMID: 9624529]



Novus Biologicals USA

10730 E. Briarwood Avenue
Centennial, CO 80112
USA
Phone: 303.730.1950
Toll Free: 1.888.506.6887
Fax: 303.730.1966
nb-customerservice@bio-techne.com

Bio-Techne Canada

21 Canmotor Ave
Toronto, ON M8Z 4E6
Canada
Phone: 905.827.6400
Toll Free: 855.668.8722
Fax: 905.827.6402
canada.inquires@bio-techne.com

Bio-Techne Ltd

19 Barton Lane
Abingdon Science Park
Abingdon, OX14 3NB, United Kingdom
Phone: (44) (0) 1235 529449
Free Phone: 0800 37 34 15
Fax: (44) (0) 1235 533420
info.EMEA@bio-techne.com

General Contact Information

www.novusbio.com
Technical Support: nb-technical@bio-techne.com
Orders: nb-customerservice@bio-techne.com
General: novus@novusbio.com

Products Related to NB100-1782

NB820-59244	Human Pancreas Whole Tissue Lysate (Adult Whole Normal)
HAF017	Rabbit anti-Goat IgG Secondary Antibody [HRP (Horseradish Peroxidase)]
HAF109	Donkey anti-Goat IgG Secondary Antibody [HRP (Horseradish Peroxidase)]
NB410-28088-1mg	Goat IgG Isotype Control

Limitations

This product is for research use only and is not approved for use in humans or in clinical diagnosis. Primary Antibodies are guaranteed for 1 year from date of receipt.

For more information on our 100% guarantee, please visit www.novusbio.com/guarantee

Earn gift cards/discounts by submitting a review: www.novusbio.com/reviews/submit/NB100-1782

Earn gift cards/discounts by submitting a publication using this product:
www.novusbio.com/publications



