

Product Datasheet

Parvalbumin Antibody NB100-1541

Unit Size: 0.1 mg

Store at -20C. Avoid freeze-thaw cycles.

www.novusbio.com



technical@novusbio.com

Publications: 2

Protocols, Publications, Related Products, Reviews, Research Tools and Images at:
www.novusbio.com/NB100-1541

Updated 10/23/2024 v.20.1

Earn rewards for product
reviews and publications.

Submit a publication at www.novusbio.com/publications

Submit a review at www.novusbio.com/reviews/destination/NB100-1541



NB100-1541**Parvalbumin Antibody**

Product Information	
Unit Size	0.1 mg
Concentration	0.5 mg/ml
Storage	Store at -20C. Avoid freeze-thaw cycles.
Clonality	Polyclonal
Preservative	0.02% Sodium Azide
Isotype	IgG
Purity	Immunogen affinity purified
Buffer	Tris saline (20 mM Tris pH 7.3, 150 mM NaCl), 0.5% BSA

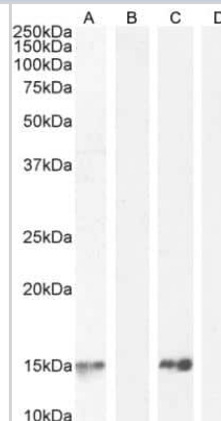
Product Description	
Host	Goat
Gene ID	5816
Gene Symbol	PVALB
Species	Human, Rat
Immunogen	Peptide with sequence C-GVDEFSTLVAES corresponding to C-Terminus according to NP_002845.1.

Product Application Details	
Applications	Western Blot, Flow Cytometry, Peptide ELISA
Recommended Dilutions	Western Blot 0.01-0.3 ug/ml, Flow Cytometry 10 ug/ml, Peptide ELISA Detection limit 1:64000
Application Notes	Western blot: Approx 15kDa band observed in Human Cerebellum lysates and approx 16kDa in Rat Brain lysates (calculated MW of 12.1kDa according to Human NP_002845.1 and 11.9kDa according to Rat NP_071944.1). These molecular weights are observed by other sources and were successfully blocked by incubation with the immunizing peptide. Flow Cytometry: Flow cytometric analysis of Kelly cells.

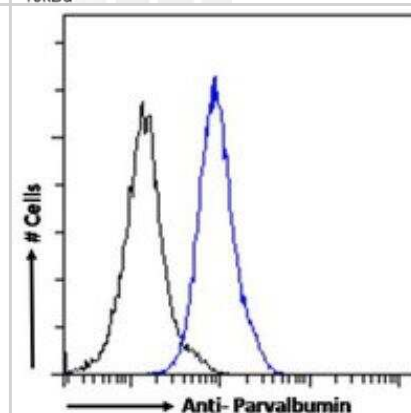


Images

Western Blot: Parvalbumin Antibody [NB100-1541] - (0.01ug/ml) staining of Human Cerebellum (A) lysate + peptide (B) and (0.3ug/ml) Rat Brain (C) lysate + peptide (D) (35ug protein in RIPA buffer). Detected by chemiluminescence.



Flow Cytometry: Parvalbumin Antibody [NB100-1541] - Analysis of paraformaldehyde fixed Kelly cells (blue line), permeabilized with 0.5% Triton. Primary incubation 1hr (10ug/ml) followed by Alexa Fluor 488 secondary antibody (1ug/ml). IgG control: Unimmunized goat IgG (black line) followed by Alexa Fluor 488 secondary antibody.



Publications

Xiong H, Xia K, Li B et al. KCHIP1: a potential modulator to GABAergic system. gmp013. 2009-01-01 [PMID: 19352544]

Hashimoto T, Bergen SE, Nguyen QL, Xu B, Monteggia LM, Pierri JN, Sun Z, Sampson AR, Lewis DA. Relationship of brain-derived neurotrophic factor its receptor TrkB to altered inhibitory prefrontal circuitry in schizophrenia. J Neurosci;25(2):372-83. 2005-01-12 [PMID: 15647480]



Novus Biologicals USA

10730 E. Briarwood Avenue
Centennial, CO 80112
USA
Phone: 303.730.1950
Toll Free: 1.888.506.6887
Fax: 303.730.1966
nb-customerservice@bio-techne.com

Bio-Techne Canada

21 Canmotor Ave
Toronto, ON M8Z 4E6
Canada
Phone: 905.827.6400
Toll Free: 855.668.8722
Fax: 905.827.6402
canada.inquires@bio-techne.com

Bio-Techne Ltd

19 Barton Lane
Abingdon Science Park
Abingdon, OX14 3NB, United Kingdom
Phone: (44) (0) 1235 529449
Free Phone: 0800 37 34 15
Fax: (44) (0) 1235 533420
info.EMEA@bio-techne.com

General Contact Information

www.novusbio.com
Technical Support: nb-technical@bio-techne.com
Orders: nb-customerservice@bio-techne.com
General: novus@novusbio.com

Products Related to NB100-1541

NB820-59177	Human Brain Whole Tissue Lysate (Adult Whole Normal)
HAF017	Rabbit anti-Goat IgG Secondary Antibody [HRP (Horseradish Peroxidase)]
HAF109	Donkey anti-Goat IgG Secondary Antibody [HRP (Horseradish Peroxidase)]
NB410-28088-1mg	Goat IgG Isotype Control

Limitations

This product is for research use only and is not approved for use in humans or in clinical diagnosis. Primary Antibodies are guaranteed for 1 year from date of receipt.

For more information on our 100% guarantee, please visit www.novusbio.com/guarantee

Earn gift cards/discounts by submitting a review: www.novusbio.com/reviews/submit/NB100-1541

Earn gift cards/discounts by submitting a publication using this product:
www.novusbio.com/publications



