

Product Datasheet

MBL Antibody NB100-1502

Unit Size: 0.1 mg

Store at -20C. Avoid freeze-thaw cycles.

www.novusbio.com



technical@novusbio.com

Publications: 3

Protocols, Publications, Related Products, Reviews, Research Tools and Images at:
www.novusbio.com/NB100-1502

Updated 10/23/2024 v.20.1

Earn rewards for product
reviews and publications.

Submit a publication at www.novusbio.com/publications

Submit a review at www.novusbio.com/reviews/destination/NB100-1502



NB100-1502

MBL Antibody

Product Information

Unit Size	0.1 mg
Concentration	0.5 mg/ml
Storage	Store at -20C. Avoid freeze-thaw cycles.
Clonality	Polyclonal
Preservative	0.02% Sodium Azide
Isotype	IgG
Purity	Immunogen affinity purified
Buffer	Tris saline (20 mM Tris pH 7.3, 150 mM NaCl), 0.5% BSA

Product Description

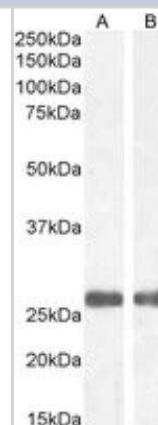
Host	Goat
Gene ID	4153
Gene Symbol	MBL2
Species	Human
Reactivity Notes	Use in Mouse reported in scientific literature (PMID:33158953).
Immunogen	Peptide with sequence STSHLAVCEFPI corresponding to C-Terminus according to NP_000233.1.

Product Application Details

Applications	Western Blot, Peptide ELISA
Recommended Dilutions	Western Blot 1 - 3 ug/mL, Peptide ELISA Detection limit 1:2000
Application Notes	Use in ICC/IF reported in scientific literature (PMID: 33158953). Use in Immunohistochemistry-Frozen reported in scientific literature (PMID: 31900334). Data was not shown by authors in either.

Images

Western Blot: MBL Antibody [NB100-1502] - Staining of Human Heart (A) and Liver (B) lysate (35 ug protein in RIPA buffer). Antibody at 1 ug/mL. Detected by chemiluminescence.



Publications

Reese B, Silwal A, Daugherty E et al. Complement as Prognostic Biomarker and Potential Therapeutic Target in Renal Cell Carcinoma J Immunol 2020-12-01 [PMID: 33158953] (ICC/IF, Mouse)

Ghouse SM, Vadrevu SK, Manne S et al. Therapeutic Targeting of Vasculature in the Premetastatic and Metastatic Niches Reduces Lung Metastasis J. Immunol. 2020-01-03 [PMID: 31900334] (IHC-Fr, Mouse)

Saevarsdottir S, Oskarsson OO, Aspelund T et al. Mannan binding lectin as an adjunct to risk assessment for myocardial infarction in individuals with enhanced risk. J Exp Med 2005-01-03 [PMID: 15623574]





Novus Biologicals USA

10730 E. Briarwood Avenue
Centennial, CO 80112
USA
Phone: 303.730.1950
Toll Free: 1.888.506.6887
Fax: 303.730.1966
nb-customerservice@bio-techne.com

Bio-Techne Canada

21 Canmotor Ave
Toronto, ON M8Z 4E6
Canada
Phone: 905.827.6400
Toll Free: 855.668.8722
Fax: 905.827.6402
canada.inquires@bio-techne.com

Bio-Techne Ltd

19 Barton Lane
Abingdon Science Park
Abingdon, OX14 3NB, United Kingdom
Phone: (44) (0) 1235 529449
Free Phone: 0800 37 34 15
Fax: (44) (0) 1235 533420
info.EMEA@bio-techne.com

General Contact Information

www.novusbio.com
Technical Support: nb-technical@bio-techne.com
Orders: nb-customerservice@bio-techne.com
General: novus@novusbio.com

Products Related to NB100-1502

NBL1-12927	MBL Overexpression Lysate
NB100-1502PEP	MBL Peptide
HAF017	Rabbit anti-Goat IgG Secondary Antibody [HRP (Horseradish Peroxidase)]
HAF109	Donkey anti-Goat IgG Secondary Antibody [HRP (Horseradish Peroxidase)]
NB410-28088-1mg	Goat IgG Isotype Control

Limitations

This product is for research use only and is not approved for use in humans or in clinical diagnosis. Primary Antibodies are guaranteed for 1 year from date of receipt.

For more information on our 100% guarantee, please visit www.novusbio.com/guarantee

Earn gift cards/discounts by submitting a review: www.novusbio.com/reviews/submit/NB100-1502

Earn gift cards/discounts by submitting a publication using this product:
www.novusbio.com/publications



