

Product Datasheet

TIMM50 Antibody NB100-1462

Unit Size: 0.1 mg

Store at -20C. Avoid freeze-thaw cycles.

www.novusbio.com



technical@novusbio.com

Publications: 1

Protocols, Publications, Related Products, Reviews, Research Tools and Images at:
www.novusbio.com/NB100-1462

Updated 9/9/2025 v.20.1

Earn rewards for product
reviews and publications.

Submit a publication at www.novusbio.com/publications

Submit a review at www.novusbio.com/reviews/destination/NB100-1462



NB100-1462**TIMM50 Antibody****Product Information**

Unit Size	0.1 mg
Concentration	0.5 mg/ml
Storage	Store at -20C. Avoid freeze-thaw cycles.
Clonality	Polyclonal
Preservative	0.02% Sodium Azide
Isotype	IgG
Purity	Immunogen affinity purified
Buffer	Tris saline (20 mM Tris pH 7.3, 150 mM NaCl), 0.5% BSA

Product Description

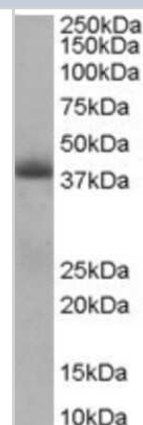
Description	Novus Biologicals Goat TIMM50 Antibody (NB100-1462) is a polyclonal antibody validated for use in WB and ELISA. Anti-TIMM50 Antibody: Cited in 1 publication. All Novus Biologicals antibodies are covered by our 100% guarantee.
Host	Goat
Gene ID	92609
Gene Symbol	TIMM50
Species	Human
Specificity/Sensitivity	This antibody is expected to recognise an epitope corresponding to aa 396-409 of human TIM50.
Immunogen	Peptide with sequence CDVRTVLEHYALEDD corresponding to internal region according to NP_001001563.1.

Product Application Details

Applications	Western Blot, Peptide ELISA
Recommended Dilutions	Western Blot 0.5 - 1.5 ug/mL, Peptide ELISA Detection limit 1:128000
Application Notes	Western blot: Approx 39 kDa in Human Heart lysate (Calculated MW of 50.5 kDa according to NP_001001563.1) . The observed molecular weight corresponds to earlier finding in literature with different antibodies (PMID: 15044455). This protein has a calculated MW of 50.5 kDa band according to NP_001001563.

Images

Western Blot: TIMM50 Antibody [NB100-1462] - Staining of Human Heart lysate (RIPA buffer, 35 ug total protein per lane). Antibody at 0.5 ug/mL. Primary incubated for 1 hour. Detected using chemiluminescence.



Publications

Guo Y, Cheong N, Zhang Z et al. Tim50, a component of the mitochondrial translocator, regulates mitochondrial integrity and cell death. J Biol Chem 2004-06-01 [PMID: 15044455]





Novus Biologicals USA

10730 E. Briarwood Avenue
Centennial, CO 80112
USA
Phone: 303.730.1950
Toll Free: 1.888.506.6887
Fax: 303.730.1966
nb-customerservice@bio-techne.com

Bio-Techne Canada

21 Canmotor Ave
Toronto, ON M8Z 4E6
Canada
Phone: 905.827.6400
Toll Free: 855.668.8722
Fax: 905.827.6402
canada.inquires@bio-techne.com

Bio-Techne Ltd

19 Barton Lane
Abingdon Science Park
Abingdon, OX14 3NB, United Kingdom
Phone: (44) (0) 1235 529449
Free Phone: 0800 37 34 15
Fax: (44) (0) 1235 533420
info.EMEA@bio-techne.com

General Contact Information

www.novusbio.com
Technical Support: nb-technical@bio-techne.com
Orders: nb-customerservice@bio-techne.com
General: novus@novusbio.com

Products Related to NB100-1462

HAF017	Rabbit anti-Goat IgG Secondary Antibody [HRP (Horseradish Peroxidase)]
HAF109	Donkey anti-Goat IgG Secondary Antibody [HRP (Horseradish Peroxidase)]
NB410-28088-1mg	Goat IgG Isotype Control
NBP2-38791PEP	TIMM50 Recombinant Protein Antigen

Limitations

This product is for research use only and is not approved for use in humans or in clinical diagnosis. Primary Antibodies are guaranteed for 1 year from date of receipt.

For more information on our 100% guarantee, please visit www.novusbio.com/guarantee

Earn gift cards/discounts by submitting a review: www.novusbio.com/reviews/submit/NB100-1462

Earn gift cards/discounts by submitting a publication using this product:
www.novusbio.com/publications



