

# Product Datasheet

## HIF-1 alpha Antibody (H1alpha67) [HiLyte Fluor 488] NB100-123L

Unit Size: 0.1 ml

Store at 4C in the dark.

[www.novusbio.com](http://www.novusbio.com)



[technical@novusbio.com](mailto:technical@novusbio.com)

Protocols, Publications, Related Products, Reviews, Research Tools and Images at:  
[www.novusbio.com/NB100-123L](http://www.novusbio.com/NB100-123L)

Updated 6/28/2023 v.20.1

Earn rewards for product  
reviews and publications.

Submit a publication at [www.novusbio.com/publications](http://www.novusbio.com/publications)

Submit a review at [www.novusbio.com/reviews/destination/NB100-123L](http://www.novusbio.com/reviews/destination/NB100-123L)



**NB100-123L**

HIF-1 alpha Antibody (H1alpha67) [HiLyte Fluor 488]

Product Information	
Unit Size	0.1 ml
Concentration	Please see the vial label for concentration. If unlisted please contact technical services.
Storage	Store at 4C in the dark.
Clonality	Monoclonal
Clone	H1alpha67
Preservative	0.05% Sodium Azide
Isotype	IgG2b
Conjugate	HiLyte Fluor 488
Purity	Protein A purified
Buffer	PBS
Target Molecular Weight	93 kDa
Product Description	
Host	Mouse
Gene ID	3091
Gene Symbol	HIF1A
Species	Human, Mouse, Rat, Porcine, Avian, Bovine, Canine, Ferret, Primate, Rabbit, Sheep
Reactivity Notes	Please note that this antibody is reactive to Mouse and derived from the same host, Mouse. Additional Mouse on Mouse blocking steps may be required for IHC and ICC experiments. Please contact Technical Support for more information. Rabbit reactivity reported in scientific literature (PMID: 16738327, 26339038).
Immunogen	This HIF-1 alpha Antibody (H1alpha67) was developed against a fusion protein containing amino acids 432 - 528 of human HIF-1 alpha [Uniprot# Q16665].
Product Application Details	
Applications	Western Blot, ELISA, Flow Cytometry, Immunocytochemistry/Immunofluorescence, Immunohistochemistry, Immunohistochemistry-Paraffin, Immunomicroscopy, Immunoprecipitation, Knockdown Validated, Knockout Validated
Recommended Dilutions	Western Blot 1:500 - 1:1000, Flow Cytometry 1:10 - 1:1000, ELISA 1:100 - 1:2000, Immunohistochemistry 1:100 - 1:300, Immunocytochemistry/Immunofluorescence 1:10 - 1:500, Immunoprecipitation, Immunohistochemistry-Paraffin 1:100 - 1:300, Immunomicroscopy, Knockout Validated, Knockdown Validated
Application Notes	Optimal dilution of this antibody should be experimentally determined.

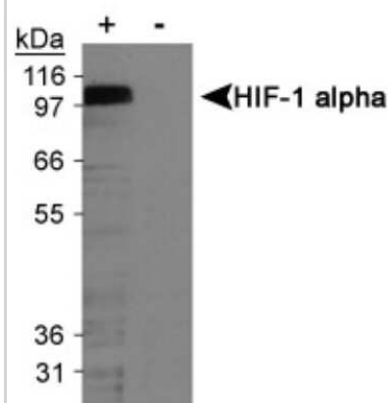


## Images

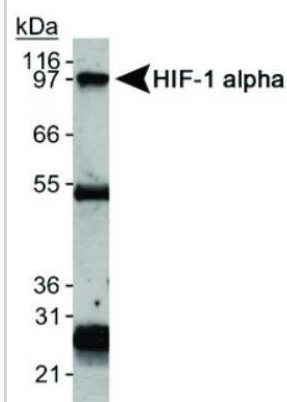
Western Blot: HIF-1 alpha Antibody (H1alpha67) [HiLyte Fluor 488] [NB100-123L] - On day 1, MEF cells (+/+, -/-), were grown on 15cm dish (2x10 to the 6th cells). On day 2, cells were exposed to hypoxia for 4hrs. Cells were washed with ice cold PBS twice and whole cell protein was extracted with RIPA buffer fortified with protease. Upon quantification, 100ug of protein was fractionated on 7% polyacrylamide gel. Gel was transferred overnight onto nitrocellulose membrane. The membrane was probed with HIF-1 alpha monoclonal antibody at a 1:500 dilution (NB100-123). The secondary antibody was conjugated with HRP and was used at a 1:2500 dilution. Photo courtesy of Dr. Gregg Semenza, Johns Hopkins University.



Western Blot: HIF-1 alpha Antibody (H1alpha67) [HiLyte Fluor 488] [NB100-123L] - Detection of HIF-1 alpha in cobalt chloride treated/untreated COS-7 nuclear extracts.



Immunoprecipitation: HIF-1 alpha Antibody (H1alpha67) [HiLyte Fluor 488] [NB100-123L] - Immunoprecipitation of HIF-1alpha using NB100-123. Heavy and light chains are also detected.





### **Novus Biologicals USA**

10730 E. Briarwood Avenue  
Centennial, CO 80112  
USA

Phone: 303.730.1950  
Toll Free: 1.888.506.6887  
Fax: 303.730.1966  
novus@novusbio.com

### **Bio-Techne Canada**

21 Canmotor Ave  
Toronto, ON M8Z 4E6  
Canada

Phone: 905.827.6400  
Toll Free: 855.668.8722  
Fax: 905.827.6402  
canada.inquires@bio-techne.com

### **Bio-Techne Ltd**

19 Barton Lane  
Abingdon Science Park  
Abingdon, OX14 3NB, United Kingdom  
Phone: (44) (0) 1235 529449  
Free Phone: 0800 37 34 15  
Fax: (44) (0) 1235 533420  
info.EMEA@bio-techne.com

### **General Contact Information**

www.novusbio.com  
Technical Support: technical@novusbio.com  
Orders: orders@novusbio.com  
General: novus@novusbio.com

### **Limitations**

This product is for research use only and is not approved for use in humans or in clinical diagnosis. Primary Antibodies are guaranteed for 1 year from date of receipt.

For more information on our 100% guarantee, please visit [www.novusbio.com/guarantee](http://www.novusbio.com/guarantee)

Earn gift cards/discounts by submitting a review: [www.novusbio.com/reviews/submit/NB100-123L](http://www.novusbio.com/reviews/submit/NB100-123L)

Earn gift cards/discounts by submitting a publication using this product:  
[www.novusbio.com/publications](http://www.novusbio.com/publications)

