

# Product Datasheet

## SETDB2 Antibody NB100-1137

Unit Size: 0.1 mg

Store at -20C. Avoid freeze-thaw cycles.

[www.novusbio.com](http://www.novusbio.com)



[technical@novusbio.com](mailto:technical@novusbio.com)

**Reviews: 6 Publications: 2**

Protocols, Publications, Related Products, Reviews, Research Tools and Images at:  
[www.novusbio.com/NB100-1137](http://www.novusbio.com/NB100-1137)

Updated 9/9/2025 v.20.1

**Earn rewards for product  
reviews and publications.**

Submit a publication at [www.novusbio.com/publications](http://www.novusbio.com/publications)

Submit a review at [www.novusbio.com/reviews/destination/NB100-1137](http://www.novusbio.com/reviews/destination/NB100-1137)



**NB100-1137****SETDB2 Antibody**

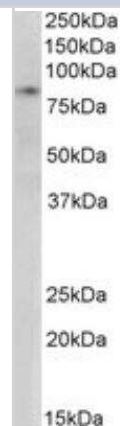
<b>Product Information</b>	
<b>Unit Size</b>	0.1 mg
<b>Concentration</b>	0.5 mg/ml
<b>Storage</b>	Store at -20C. Avoid freeze-thaw cycles.
<b>Clonality</b>	Polyclonal
<b>Preservative</b>	0.02% Sodium Azide
<b>Isotype</b>	IgG
<b>Purity</b>	Immunogen affinity purified
<b>Buffer</b>	Tris saline (20 mM Tris pH 7.3, 150 mM NaCl), 0.5% BSA

<b>Product Description</b>	
<b>Description</b>	Novus Biologicals Goat SETDB2 Antibody (NB100-1137) is a polyclonal antibody validated for use in WB, ELISA, ICC/IF, IP and ChIP. Anti-SETDB2 Antibody: Cited in 2 publications. All Novus Biologicals antibodies are covered by our 100% guarantee.
<b>Host</b>	Goat
<b>Gene ID</b>	83852
<b>Gene Symbol</b>	SETDB2
<b>Species</b>	Human
<b>Specificity/Sensitivity</b>	This antibody is expected to recognize both reported isoforms (NP_114121.2; NP_001153780.1).
<b>Immunogen</b>	Peptide with sequence GEKNGDAKTFWME-C corresponding to N-Terminus according to NP_114121.2, NP_001153780.1.

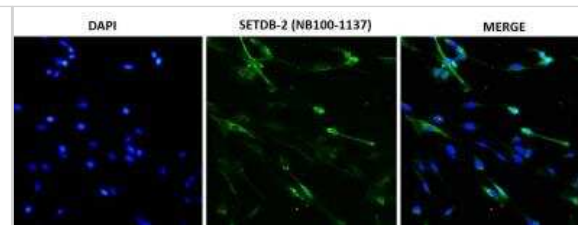
<b>Product Application Details</b>	
<b>Applications</b>	Western Blot, Immunocytochemistry/ Immunofluorescence, Immunoprecipitation, Peptide ELISA, Chromatin Immunoprecipitation (ChIP)
<b>Recommended Dilutions</b>	Western Blot 1 - 3 ug/mL, Immunocytochemistry/ Immunofluorescence, Immunoprecipitation, Peptide ELISA Detection limit 1:1000, Chromatin Immunoprecipitation (ChIP)
<b>Application Notes</b>	Approx 85 kDa band observed in nuclear lysates of cell line HeLa (calculated MW of 81.9 kDa according to NP_114121.2). Not suitable on mouse heart and rat heart lysates. This SETDB2 antibody is validated for WB, CHIP, ICC/IF IP from verified customer reviews.

**Images**

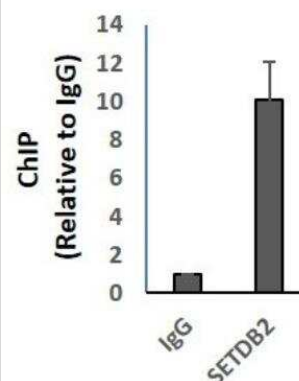
Western Blot: SETDB2 Antibody [NB100-1137] - Staining of Nuclear HeLa lysate with antibody at 0.3 ug/mL (35 ug protein in RIPA buffer). Detected by chemiluminescence.



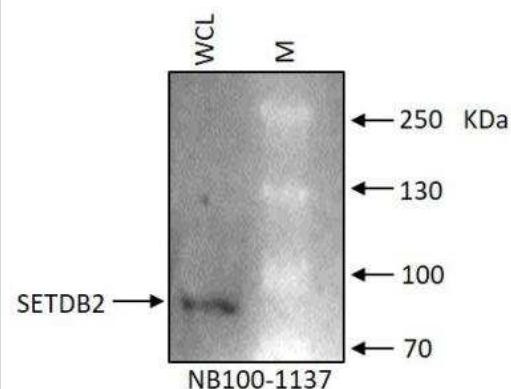
**Immunocytochemistry/Immunofluorescence: SETDB2 Antibody [NB100-1137]** - Human dermal microvascular endothelial cells were fixed with 4% paraformaldehyde, permeabilized with 0.2% TritonX-100 and immunostained with NB100-1137 (1:100 dilution). Secondary antibody conjugated to Alexafluor 488. Image submitted by a verified customer review.



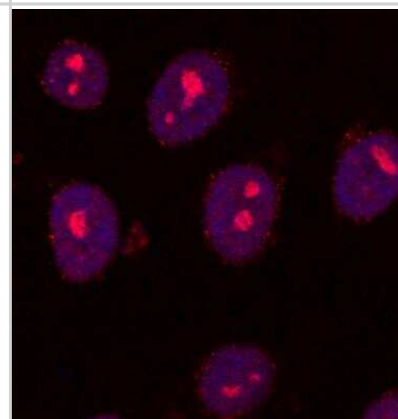
**Chromatin Immunoprecipitation (ChIP): SETDB2 Antibody [NB100-1137]** - Human B-cell nuclear extract (500 ug). Gene of interest promoter primers were used for amplification to detect ChIP efficiency to IgG control. Image submitted by a verified customer review.



**Western Blot: SETDB2 Antibody [NB100-1137]** - RL human non-Hodgkin's lymphoma B cell line whole cell lysate (WCL). Single band around correct MW is specific to the target protein SETDB2. Image submitted by a verified customer review.



**Immunocytochemistry/Immunofluorescence: SETDB2 Antibody [NB100-1137]** - SETDB2 in human induced Pluripotent Stem Cells (iPSCs) using anti-SETDB2 antibody. Image submitted by a verified customer review.



## Publications

Roy A, Ghosh A, Kumar B, Chandran B IFI16, a nuclear innate immune DNA sensor, mediates epigenetic silencing of herpesvirus genomes by its association with H3K9 methyltransferases SUV39H1 and GLP Elife 2019-11-04 [PMID: 31682228] (ICC/IF, IP, WB, Chemotaxis, Human)

Mabuchi H, Fujii H, Calin G et al. Cloning and characterization of CLLD6, CLLD7, and CLLD8, novel candidate genes for leukemogenesis at chromosome 13q14, a region commonly deleted in B-cell chronic lymphocytic leukemia. Cancer Res 2001-04-01 [PMID: 11306461]





### **Novus Biologicals USA**

10730 E. Briarwood Avenue  
Centennial, CO 80112  
USA  
Phone: 303.730.1950  
Toll Free: 1.888.506.6887  
Fax: 303.730.1966  
nb-customerservice@bio-techne.com

### **Bio-Techne Canada**

21 Canmotor Ave  
Toronto, ON M8Z 4E6  
Canada  
Phone: 905.827.6400  
Toll Free: 855.668.8722  
Fax: 905.827.6402  
canada.inquires@bio-techne.com

### **Bio-Techne Ltd**

19 Barton Lane  
Abingdon Science Park  
Abingdon, OX14 3NB, United Kingdom  
Phone: (44) (0) 1235 529449  
Free Phone: 0800 37 34 15  
Fax: (44) (0) 1235 533420  
info.EMEA@bio-techne.com

### **General Contact Information**

www.novusbio.com  
Technical Support: nb-technical@bio-techne.com  
Orders: nb-customerservice@bio-techne.com  
General: novus@novusbio.com

### **Products Related to NB100-1137**

HAF017	Rabbit anti-Goat IgG Secondary Antibody [HRP (Horseradish Peroxidase)]
HAF109	Donkey anti-Goat IgG Secondary Antibody [HRP (Horseradish Peroxidase)]
NB410-28088-1mg	Goat IgG Isotype Control
NBP2-57394PEP	SETDB2 Recombinant Protein Antigen

### **Limitations**

This product is for research use only and is not approved for use in humans or in clinical diagnosis. Primary Antibodies are guaranteed for 1 year from date of receipt.

For more information on our 100% guarantee, please visit [www.novusbio.com/guarantee](http://www.novusbio.com/guarantee)

Earn gift cards/discounts by submitting a review: [www.novusbio.com/reviews/submit/NB100-1137](http://www.novusbio.com/reviews/submit/NB100-1137)

Earn gift cards/discounts by submitting a publication using this product:  
[www.novusbio.com/publications](http://www.novusbio.com/publications)



