

Product Datasheet

KLF2 Antibody NB100-1051

Unit Size: 0.1 mg

Store at -20C. Avoid freeze-thaw cycles.

www.novusbio.com



technical@novusbio.com

Publications: 7

Protocols, Publications, Related Products, Reviews, Research Tools and Images at:
www.novusbio.com/NB100-1051

Updated 12/20/2023 v.20.1

Earn rewards for product
reviews and publications.

Submit a publication at www.novusbio.com/publications

Submit a review at www.novusbio.com/reviews/destination/NB100-1051



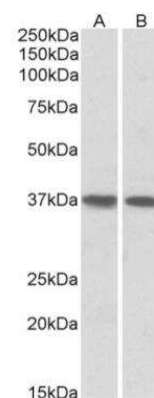
NB100-1051**KLF2 Antibody**

Product Information	
Unit Size	0.1 mg
Concentration	0.5 mg/ml
Storage	Store at -20C. Avoid freeze-thaw cycles.
Clonality	Polyclonal
Preservative	0.02% Sodium Azide
Isotype	IgG
Purity	Immunogen affinity purified
Buffer	Tris saline (20 mM Tris pH 7.3, 150 mM NaCl), 0.5% BSA
Product Description	
Host	Goat
Gene ID	10365
Gene Symbol	KLF2
Species	Human, Rat
Reactivity Notes	Rat reactivity reported in scientific literature (PMID: 24516105 & 24024790).
Immunogen	Peptide with sequence ALSEPILPSFST-C corresponding to N-Terminus according to NP_057354.1.
Product Application Details	
Applications	Western Blot, Immunocytochemistry/ Immunofluorescence, Immunohistochemistry, Immunohistochemistry-Frozen, Immunohistochemistry-Paraffin, Peptide ELISA
Recommended Dilutions	Western Blot 1 - 3 ug/ml, Immunohistochemistry, Immunocytochemistry/ Immunofluorescence, Immunohistochemistry-Paraffin, Immunohistochemistry-Frozen, Peptide ELISA Detection limit 1:16000
Application Notes	Use in IHC-P reported in scientific literature (PMID:35494227) WB: Approx. 37 kDa band observed in human heart and lung lysates (calculated MW of 37.4 kDa band according to NP_057354.1). Primary incubation was 1 hour. Preliminary testing was unsuccessful on Rat Brain and Mouse Heart for this particular batch. Use in ICC/IF and IHC-Frozen reported in scientific literature (PMID 24516105)..

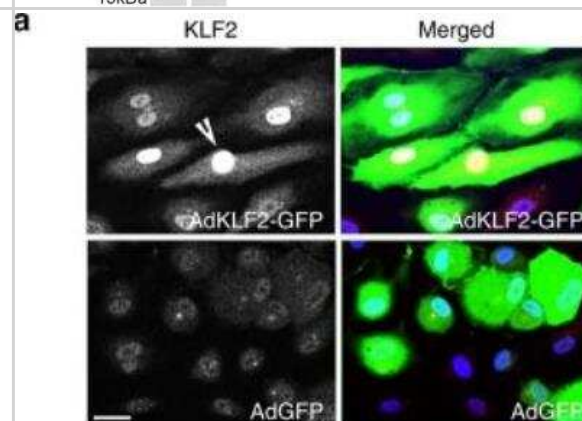


Images

Western Blot: KLF2 Antibody [NB100-1051] - Staining of Human Heart (A) and Lung (B) lysates (35ug protein in RIPA buffer). Primary incubation was 1 hour. Detected by chemiluminescence.



Immunocytochemistry/Immunofluorescence: KLF2 Antibody [NB100-1051] - Expression of KLF2 in cells infected with AdGFP and AdKLF2-GFP (24h). Infected cells are green and the arrowhead points to nuclear localisation of KLF2; bar=10um. Image collected and cropped by CiteAb from the following publication ([nature.com/articles/s41467-020-14966-x](https://www.nature.com/articles/s41467-020-14966-x)), licensed under a CC-BY license.



Publications

RytKOnen K, Faux T, Mahmoudian M et al. Histone H3K4me3 breadth in hypoxia reveals endometrial core functions and stress adaptation linked to endometriosis *iScience* 2022-05-01 [PMID: 35494227] (IHC-P, Human)

Kamel NM, El-Tanbouly DM, Abdallah DM, Sayed HM PAR1, a therapeutic target for remote lung injury associated with hind limb ischemia/reperfusion: ERK5/KLF2-dependent lung capillary barrier preservation *Chemico-biological interactions* 2022-01-11 [PMID: 35031271] (WB, Human)

Han JH, Jang KW, Myung CS Garcinia cambogia attenuates adipogenesis by affecting CEBPB and SQSTM1/p62-mediated selective autophagic degradation of KLF3 through RPS6KA1 and STAT3 suppression *Autophagy* 2021-06-08 [PMID: 34101546]

Sindi Ha, Russomanno G, Satta S et Al. Therapeutic potential of KLF2-induced exosomal microRNAs in pulmonary hypertension *Nat Commun* 2020-03-04 [PMID: 32132543] (ICC/IF, Human)

Kim YS, Kwon JS, Hong MH et al. Restoration of angiogenic capacity of diabetes-insulted mesenchymal stem cells by oxytocin. *BMC Cell Biol.* 2013-09-11 [PMID: 24024790] (WB, Rat)

Haack KK, Marcus NJ, Del Rio R et al. Simvastatin treatment attenuates increased respiratory variability and apnea/hypopnea index in rats with chronic heart failure. *Hypertension.* 2014-05-01 [PMID: 24516105] (ICC/IF, IHC-Fr, Rat)

Anderson KP, Kern CB, Crable SC, Lingrel JB. Isolation of a gene encoding a functional zinc finger protein homologous to erythroid Kruppel-like factor: identification of a new multigene family. *Mol Cell Biol* 1995-11-01 [PMID: 7565748]



Novus Biologicals USA

10730 E. Briarwood Avenue
Centennial, CO 80112
USA
Phone: 303.730.1950
Toll Free: 1.888.506.6887
Fax: 303.730.1966
nb-customerservice@bio-techne.com

Bio-Techne Canada

21 Canmotor Ave
Toronto, ON M8Z 4E6
Canada
Phone: 905.827.6400
Toll Free: 855.668.8722
Fax: 905.827.6402
canada.inquires@bio-techne.com

Bio-Techne Ltd

19 Barton Lane
Abingdon Science Park
Abingdon, OX14 3NB, United Kingdom
Phone: (44) (0) 1235 529449
Free Phone: 0800 37 34 15
Fax: (44) (0) 1235 533420
info.EMEA@bio-techne.com

General Contact Information

www.novusbio.com
Technical Support: nb-technical@bio-techne.com
Orders: nb-customerservice@bio-techne.com
General: novus@novusbio.com

Limitations

This product is for research use only and is not approved for use in humans or in clinical diagnosis. Primary Antibodies are guaranteed for 1 year from date of receipt.

For more information on our 100% guarantee, please visit www.novusbio.com/guarantee

Earn gift cards/discounts by submitting a review: www.novusbio.com/reviews/submit/NB100-1051

Earn gift cards/discounts by submitting a publication using this product:
www.novusbio.com/publications

