

Product Datasheet

ARPC2 Antibody NB100-1037

Unit Size: 0.1 mg

Store at -20C. Avoid freeze-thaw cycles.

www.novusbio.com



technical@novusbio.com

Publications: 6

Protocols, Publications, Related Products, Reviews, Research Tools and Images at:
www.novusbio.com/NB100-1037

Updated 10/23/2024 v.20.1

Earn rewards for product
reviews and publications.

Submit a publication at www.novusbio.com/publications

Submit a review at www.novusbio.com/reviews/destination/NB100-1037



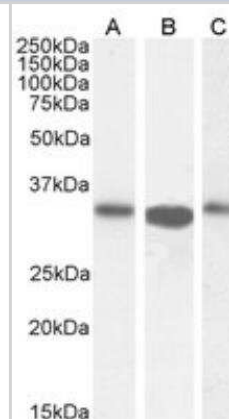
NB100-1037**ARPC2 Antibody**

Product Information	
Unit Size	0.1 mg
Concentration	0.5 mg/ml
Storage	Store at -20C. Avoid freeze-thaw cycles.
Clonality	Polyclonal
Preservative	0.02% Sodium Azide
Isotype	IgG
Purity	Immunogen affinity purified
Buffer	Tris saline (20 mM Tris pH 7.3, 150 mM NaCl), 0.5% BSA
Product Description	
Host	Goat
Gene ID	10109
Gene Symbol	ARPC2
Species	Human, Mouse, Rat, Primate
Reactivity Notes	Rat reactivity reported in scientific literature (PMID: 28703125). Primate reactivity reported in scientific literature (PMID: 26349808). Mouse reactivity reported in scientific literature (PMID: 17682067). Predicted cross-reactivity based on sequence identity: Canine, Bovine.
Specificity/Sensitivity	The reported variants NP_005722.1 and NP_690601.1 represent identical protein.
Immunogen	Peptide with sequence C-EMKTITGKTFSSR corresponding to C-Terminus according to NP_005722.1, NP_690601.1.
Product Application Details	
Applications	Western Blot, Immunocytochemistry/ Immunofluorescence, Immunohistochemistry, Immunohistochemistry-Paraffin, Peptide ELISA
Recommended Dilutions	Western Blot 0.1 - 0.5 ug/mL, Immunohistochemistry 3 - 5 ug/mL, Immunocytochemistry/ Immunofluorescence 10 ug/mL, Immunohistochemistry-Paraffin 3 - 5 ug/mL, Peptide ELISA Detection limit 1:32000
Application Notes	Western blot: Approx 34-35 kDa band observed in lysates of cell lines CACO-2, HeLa and Jurkat (calculated MW of 34.3 kDa according to NP_005722.1). IHC: In paraffin embedded Human Spleen shows cytoplasm staining in some splenocytes in and around a T-cell area.

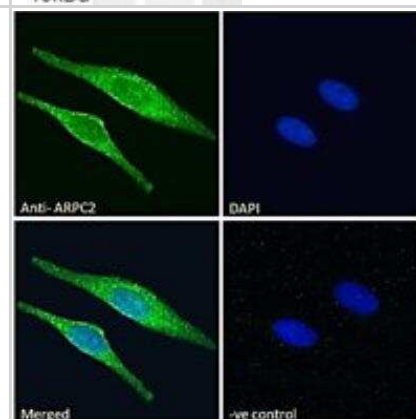


Images

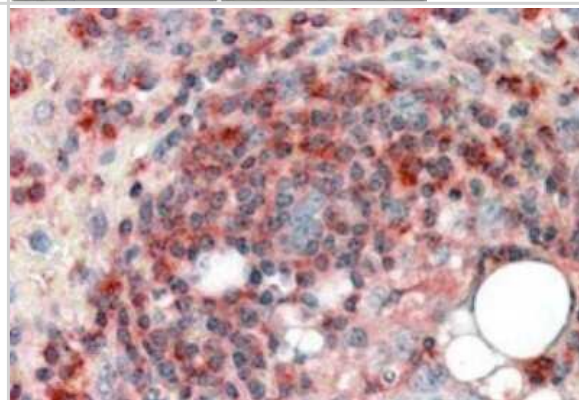
Western Blot: ARPC2 Antibody [NB100-1037] - Staining of CACO-2 with antibody at 0.5 ug/mL (A), HeLa (B) and Jurkat (C) lysate with antibody at 0.1 ug/mL (35 ug protein in RIPA buffer). Detected by chemiluminescence.



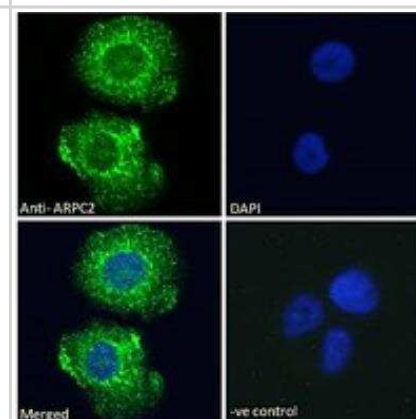
Immunocytochemistry/Immunofluorescence: ARPC2 Antibody [NB100-1037] - Immunofluorescence analysis of paraformaldehyde fixed HeLa cells, permeabilized with 0.15% Triton. Primary incubation 1hr (10 ug/mL) followed by Alexa Fluor 488 secondary antibody (2 ug/mL), showing cytoplasmic staining. The nuclear stain is DAPI (blue). Negative control: Unimmunized goat IgG (10 ug/mL) followed by Alexa Fluor 488 secondary antibody (2 ug/mL).



Immunohistochemistry-Paraffin: ARPC2 Antibody [NB100-1037] - Staining of Human Spleen. Steamed antigen retrieval with citrate buffer pH 6, AP-staining. Antibody at 3.8 ug/mL.



Immunocytochemistry/Immunofluorescence: ARPC2 Antibody [NB100-1037] - Immunofluorescence analysis of paraformaldehyde fixed A431 cells, permeabilized with 0.15% Triton. Primary incubation 1hr (10 ug/mL) followed by Alexa Fluor 488 secondary antibody (2 ug/mL), showing cytoplasmic staining. The nuclear stain is DAPI (blue). Negative control: Unimmunized goat IgG (10 ug/mL) followed by Alexa Fluor 488 secondary antibody (2 ug/mL).



Publications

Vickery J, Toperzer J, Raab J et al. Synaptopodin is necessary for *Shigella flexneri* intercellular spread bioRxiv 2023-04-26 [PMID: 37163027] (ICC/IF, Human)

Yuge S, Nishiyama K, Arima Y et al. Mechanical loading of intraluminal pressure mediates wound angiogenesis by regulating the TOCA family of F-BAR proteins Nature communications 2022-05-12 [PMID: 35551172] (ICC/IF, Human)

Leyton-Puig D, Isogai T, Argenzio E et al. Flat clathrin lattices are dynamic actin-controlled hubs for clathrin-mediated endocytosis and signalling of specific receptors Nat Commun 2017-07-13 [PMID: 28703125] (WB, Rat)

Isogai T, van der Kammen R, Leyton-Puig D et al. Initiation of lamellipodia and ruffles involves cooperation between mDia1 and the Arp2/3 complex. J. Cell. Sci. 2015-09-08 [PMID: 26349808] (WB, Human, Primate)

Welch MD, DePace AH, Verma S et al. The human Arp2/3 complex is composed of evolutionarily conserved subunits and is localized to cellular regions of dynamic actin filament assembly. J Cell Biol 1997-07-28 [PMID: 9230079]

Sakata D, Taniguchi H, Yasuda S et al. Impaired T lymphocyte trafficking in mice deficient in an actin-nucleating protein, mDia1. J Exp Med. 2007-09-03 [PMID: 17682067] (WB, Mouse)

Details:

WB (Fig 5B): primary T cells isolated from adult mouse spleen.





Novus Biologicals USA

10730 E. Briarwood Avenue
Centennial, CO 80112
USA
Phone: 303.730.1950
Toll Free: 1.888.506.6887
Fax: 303.730.1966
nb-customerservice@bio-techne.com

Bio-Techne Canada

21 Canmotor Ave
Toronto, ON M8Z 4E6
Canada
Phone: 905.827.6400
Toll Free: 855.668.8722
Fax: 905.827.6402
canada.inquires@bio-techne.com

Bio-Techne Ltd

19 Barton Lane
Abingdon Science Park
Abingdon, OX14 3NB, United Kingdom
Phone: (44) (0) 1235 529449
Free Phone: 0800 37 34 15
Fax: (44) (0) 1235 533420
info.EMEA@bio-techne.com

General Contact Information

www.novusbio.com
Technical Support: nb-technical@bio-techne.com
Orders: nb-customerservice@bio-techne.com
General: novus@novusbio.com

Products Related to NB100-1037

NB800-PC1	HeLa Whole Cell Lysate
HAF017	Rabbit anti-Goat IgG Secondary Antibody [HRP (Horseradish Peroxidase)]
HAF109	Donkey anti-Goat IgG Secondary Antibody [HRP (Horseradish Peroxidase)]
NB410-28088-1mg	Goat IgG Isotype Control

Limitations

This product is for research use only and is not approved for use in humans or in clinical diagnosis. Primary Antibodies are guaranteed for 1 year from date of receipt.

For more information on our 100% guarantee, please visit www.novusbio.com/guarantee

Earn gift cards/discounts by submitting a review: www.novusbio.com/reviews/submit/NB100-1037

Earn gift cards/discounts by submitting a publication using this product:
www.novusbio.com/publications



