

# Product Datasheet

## Mouse RBP4/Retinol-Binding Protein 4 ELISA Kit (Colorimetric) KA2008

Unit Size: 1 Kit

Store at 4C short term. Aliquot and store at -20C long term. Avoid freeze-thaw cycles.

[www.novusbio.com](http://www.novusbio.com)



[technical@novusbio.com](mailto:technical@novusbio.com)

### Publications: 1

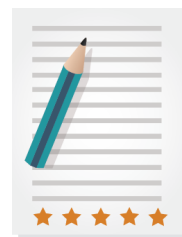
Protocols, Publications, Related Products, Reviews, Research Tools and Images at:  
[www.novusbio.com/KA2008](http://www.novusbio.com/KA2008)

Updated 6/27/2023 v.20.1

Earn rewards for product  
reviews and publications.

Submit a publication at [www.novusbio.com/publications](http://www.novusbio.com/publications)

Submit a review at [www.novusbio.com/reviews/destination/KA2008](http://www.novusbio.com/reviews/destination/KA2008)



**KA2008****Mouse RBP4/Retinol-Binding Protein 4 ELISA Kit (Colorimetric)****Product Information**

<b>Unit Size</b>	1 Kit
<b>Concentration</b>	Concentration is not relevant for this product. Please see the protocols for proper use of this product.
<b>Storage</b>	Store at 4C short term. Aliquot and store at -20C long term. Avoid freeze-thaw cycles.

**Product Description**

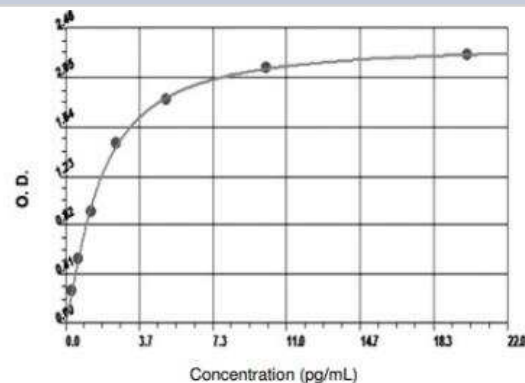
<b>Description</b>	Quality control test: Standard Curve. Rbp4 (Mouse) ELISA Kit is a sandwich enzyme immunoassay for the quantitative measurement of mouse Rbp4.
<b>Gene ID</b>	5950
<b>Gene Symbol</b>	RBP4
<b>Species</b>	Mouse
<b>Notes</b>	This product is produced by and distributed for Abnova, a company based in Taiwan.
<b>Standard Curve Range</b>	0.132 to 20 ng/mL
<b>Sensitivity</b>	<10 pg/mL
<b>Assay Type</b>	Sandwich ELISA
<b>Suitable Sample Type</b>	Body Fluid, Cell Culture Supernatant, Plasma, Serum, Tissue Lysate
<b>Sample Volume</b>	100 uL

**Product Application Details**

<b>Applications</b>	ELISA, Quantification
<b>Recommended Dilutions</b>	ELISA, Quantification
<b>Application Notes</b>	Useful for quantification.

**Images**

ELISA: RBP4/Retinol-Binding Protein 4 ELISA Kit [Biotin] [KA2008] - Standard curve

**Publications**

Kim JH, Meyers MS, Khuder SS et al. Tissue-selective estrogen complexes with bazedoxifene prevent metabolic dysfunction in female mice. Mol Metab. 2014-01-09 [PMID: 24634829]



### **Novus Biologicals USA**

10730 E. Briarwood Avenue  
Centennial, CO 80112  
USA  
Phone: 303.730.1950  
Toll Free: 1.888.506.6887  
Fax: 303.730.1966  
nb-customerservice@bio-techne.com

### **Bio-Techne Canada**

21 Canmotor Ave  
Toronto, ON M8Z 4E6  
Canada  
Phone: 905.827.6400  
Toll Free: 855.668.8722  
Fax: 905.827.6402  
canada.inquires@bio-techne.com

### **Bio-Techne Ltd**

19 Barton Lane  
Abingdon Science Park  
Abingdon, OX14 3NB, United Kingdom  
Phone: (44) (0) 1235 529449  
Free Phone: 0800 37 34 15  
Fax: (44) (0) 1235 533420  
info.EMEA@bio-techne.com

### **General Contact Information**

[www.novusbio.com](http://www.novusbio.com)  
Technical Support: nb-technical@bio-techne.com  
Orders: nb-customerservice@bio-techne.com  
General: novus@novusbio.com

### **Limitations**

This product is for research use only and is not approved for use in humans or in clinical diagnosis. ELISA Kits are guaranteed for 6 months from date of receipt.

For more information on our 100% guarantee, please visit [www.novusbio.com/guarantee](http://www.novusbio.com/guarantee)

Earn gift cards/discounts by submitting a review: [www.novusbio.com/reviews/submit/KA2008](http://www.novusbio.com/reviews/submit/KA2008)

Earn gift cards/discounts by submitting a publication using this product:  
[www.novusbio.com/publications](http://www.novusbio.com/publications)

