

Product Datasheet

Human Laminin ELISA Kit (Colorimetric) KA1999

Unit Size: 1 Kit

Store at 4C short term. Aliquot and store at -20C long term. Avoid freeze-thaw cycles.

www.novusbio.com



technical@novusbio.com

Publications: 2

Protocols, Publications, Related Products, Reviews, Research Tools and Images at:
www.novusbio.com/KA1999

Updated 10/23/2024 v.20.1

Earn rewards for product
reviews and publications.

Submit a publication at www.novusbio.com/publications

Submit a review at www.novusbio.com/reviews/destination/KA1999



KA1999**Human Laminin ELISA Kit (Colorimetric)****Product Information**

Unit Size	1 Kit
Concentration	Concentration is not relevant for this product. Please see the protocols for proper use of this product.
Storage	Store at 4C short term. Aliquot and store at -20C long term. Avoid freeze-thaw cycles.

Product Description

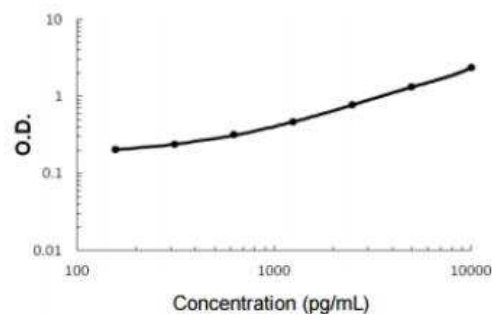
Description	Laminin (Human) ELISA Kit is a sandwich enzyme immunoassay for the quantitative measurement of human laminin.
Gene ID	284217
Gene Symbol	LAMA1
Species	Human
Notes	This product is produced by and distributed for Abnova, a company based in Taiwan.
Standard Curve Range	156 to 10000 pg/mL
Sensitivity	<10 pg/mL
Assay Type	Sandwich ELISA
Suitable Sample Type	Cell Culture Supernatant, Cell Lysates, Serum
Sample Volume	100 uL

Product Application Details

Applications	ELISA, Quantification
Recommended Dilutions	ELISA, Quantification

Images

ELISA: Human Laminin ELISA Kit [KA1999] - Standard curve for Human Laminin ELISA Kit [KA1999].

**Publications**

Yin L, Fang F, Song X et al. The pro-adhesion and pro-survival effects of glucocorticoid in human ovarian cancer cells. J Mol Endocrinol 2016-05-05 [PMID: 27151574]

Fang CL, Yin LJ, Sharma S et al. Resistin-like molecule-b (RELM-b) targets airways fibroblasts to effect remodelling in asthma: from mouse to man. Clin. Exp. Allergy. 2014-12-27 [PMID: 25545115] (ELISA, Human)





Novus Biologicals USA

10730 E. Briarwood Avenue
Centennial, CO 80112
USA
Phone: 303.730.1950
Toll Free: 1.888.506.6887
Fax: 303.730.1966
nb-customerservice@bio-techne.com

Bio-Techne Canada

21 Canmotor Ave
Toronto, ON M8Z 4E6
Canada
Phone: 905.827.6400
Toll Free: 855.668.8722
Fax: 905.827.6402
canada.inquires@bio-techne.com

Bio-Techne Ltd

19 Barton Lane
Abingdon Science Park
Abingdon, OX14 3NB, United Kingdom
Phone: (44) (0) 1235 529449
Free Phone: 0800 37 34 15
Fax: (44) (0) 1235 533420
info.EMEA@bio-techne.com

General Contact Information

www.novusbio.com
Technical Support: nb-technical@bio-techne.com
Orders: nb-customerservice@bio-techne.com
General: novus@novusbio.com

Products Related to KA1999

NBP2-42384PEP	Laminin Recombinant Protein Antigen
236-EG-200	EGF [Unconjugated]
NB300-144	Laminin Antibody
NB100-56503	Cytochrome c Antibody (7H8.2C12) - BSA Free

Limitations

This product is for research use only and is not approved for use in humans or in clinical diagnosis. ELISA Kits are guaranteed for 6 months from date of receipt.

For more information on our 100% guarantee, please visit www.novusbio.com/guarantee

Earn gift cards/discounts by submitting a review: www.novusbio.com/reviews/submit/KA1999

Earn gift cards/discounts by submitting a publication using this product:
www.novusbio.com/publications

