

Product Datasheet

Normetanephrine ELISA Kit (Colorimetric) KA1892

Unit Size: 1 Kit

Store at 4C.

www.novusbio.com



technical@novusbio.com

Protocols, Publications, Related Products, Reviews, Research Tools and Images at:
www.novusbio.com/KA1892

Updated 10/23/2024 v.20.1

Earn rewards for product
reviews and publications.

Submit a publication at www.novusbio.com/publications

Submit a review at www.novusbio.com/reviews/destination/KA1892



KA1892**Normetanephine ELISA Kit (Colorimetric)**

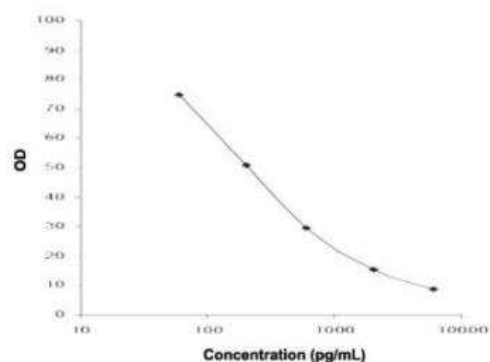
Product Information	
Unit Size	1 Kit
Concentration	Concentration is not relevant for this product. Please see the protocols for proper use of this product.
Storage	Store at 4C.

Product Description	
Description	Normetanephine ELISA Kit is an enzyme immunoassay for the quantitative determination of free Normetanephine in plasma.
Kit Components	Reaction Tubes, Adhesive Foil, Wash Buffer Concentrate, Enzyme Conjugate, Substrate, Stop Solution, Normetanephine-Normetanephine Microtiter Strips, Normetanephine Antiserum, Assay Buffer, Equalizing Reagent, Standard A, Standard B, Standard C, Standard D, Standard E, Standard F, Acylation Concentrate, Control 1, Control 2
Notes	This product is produced by and distributed for Abnova, a company based in Taiwan.
Standard Curve Range	22.8 to 7200 pg/mL
Sensitivity	17.9 pg/mL
Inter Assay	CV% < 7.37%
Intra Assay	CV% < 7.43%
Assay Type	Quantification
Spiking Recovery	0.92
Suitable Sample Type	Plasma
Sample Volume	25 uL (extracted samples)

Product Application Details	
Applications	ELISA, Quantification
Recommended Dilutions	ELISA, Quantification

Images

ELISA: Normetanephine ELISA Kit (Colorimetric) [KA1892] - These standard curves are provided for demonstration only. A standard curve should be generated for each set of samples assayed.





Novus Biologicals USA

10730 E. Briarwood Avenue
Centennial, CO 80112
USA
Phone: 303.730.1950
Toll Free: 1.888.506.6887
Fax: 303.730.1966
nb-customerservice@bio-techne.com

Bio-Techne Canada

21 Canmotor Ave
Toronto, ON M8Z 4E6
Canada
Phone: 905.827.6400
Toll Free: 855.668.8722
Fax: 905.827.6402
canada.inquires@bio-techne.com

Bio-Techne Ltd

19 Barton Lane
Abingdon Science Park
Abingdon, OX14 3NB, United Kingdom
Phone: (44) (0) 1235 529449
Free Phone: 0800 37 34 15
Fax: (44) (0) 1235 533420
info.EMEA@bio-techne.com

General Contact Information

www.novusbio.com
Technical Support: nb-technical@bio-techne.com
Orders: nb-customerservice@bio-techne.com
General: novus@novusbio.com

Limitations

This product is for research use only and is not approved for use in humans or in clinical diagnosis. ELISA Kits are guaranteed for 6 months from date of receipt.

For more information on our 100% guarantee, please visit www.novusbio.com/guarantee

Earn gift cards/discounts by submitting a review: www.novusbio.com/reviews/submit/KA1892

Earn gift cards/discounts by submitting a publication using this product:
www.novusbio.com/publications

