

Product Datasheet

Human, Monkey Coagulation Factor XIV/Protein C ELISA Kit (Colorimetric) KA1840

Unit Size: 1 Kit

Storage of components varies. See protocol for specific instructions.

www.novusbio.com



technical@novusbio.com

Protocols, Publications, Related Products, Reviews, Research Tools and Images at:
www.novusbio.com/KA1840

Updated 10/23/2024 v.20.1

Earn rewards for product
reviews and publications.

Submit a publication at www.novusbio.com/publications

Submit a review at www.novusbio.com/reviews/destination/KA1840



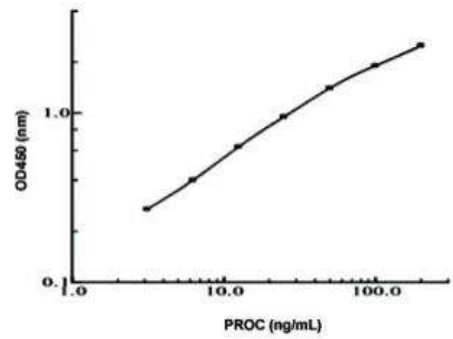
KA1840**Human, Monkey Coagulation Factor XIV/Protein C ELISA Kit (Colorimetric)**

Product Information	
Unit Size	1 Kit
Concentration	Concentration is not relevant for this product. Please see the protocols for proper use of this product.
Storage	Storage of components varies. See protocol for specific instructions.
Product Description	
Description	Quality control test: Standard curve. PROC (Human) ELISA Kit is a sandwich enzyme immunoassay for the quantitative measurement of human PROC.
Gene ID	5624
Gene Symbol	PROC
Species	Human, Monkey
Kit Components	Human Protein C Microplate: A 96-well polystyrene microplate (12 strips of 8 wells) coated with a polyclonal antibody against human Protein C., Sealing Tapes: Precut, pressure-sensitive sealing tapes that can be cut to fit the format of the individual assay., Human Protein C Standard: Human Protein C in a buffered protein base (lyophilized)., Biotinylated Protein C Antibody (100x): A 100-fold concentrated biotinylated polyclonal antibody against Protein C., Wash Buffer Concentrate (20x): A 20-fold concentrated buffered surfactant., Streptavidin-Peroxidase Conjugate (SP Conjugate): A 100-fold concentrate., Chromogen Substrate: A ready-to-use stabilized peroxidase chromogen substrate tetramethylbenzidine., Stop Solution: A 0.5 N hydrochloric acid to stop the chromogen substrate reaction.
Notes	This product is produced by and distributed for Abnova, a company based in Taiwan.
Standard Curve Range	3.125 to 200 ng/mL
Sensitivity	2.5 ng/mL
Inter Assay	CV% < 7.3%
Intra Assay	CV% < 4.8%
Assay Type	Sandwich ELISA
Spiking Recovery	98%
Suitable Sample Type	Cell Culture Samples, Milk, Saliva and Urine
Sample Volume	50 uL
Product Application Details	
Applications	ELISA, Quantification
Recommended Dilutions	ELISA, Quantification



Images

ELISA: Coagulation Factor XIV/Protein C ELISA Kit [Biotin] [KA1840] -
Standard curve





Novus Biologicals USA

10730 E. Briarwood Avenue
Centennial, CO 80112
USA
Phone: 303.730.1950
Toll Free: 1.888.506.6887
Fax: 303.730.1966
nb-customerservice@bio-techne.com

Bio-Techne Canada

21 Canmotor Ave
Toronto, ON M8Z 4E6
Canada
Phone: 905.827.6400
Toll Free: 855.668.8722
Fax: 905.827.6402
canada.inquires@bio-techne.com

Bio-Techne Ltd

19 Barton Lane
Abingdon Science Park
Abingdon, OX14 3NB, United Kingdom
Phone: (44) (0) 1235 529449
Free Phone: 0800 37 34 15
Fax: (44) (0) 1235 533420
info.EMEA@bio-techne.com

General Contact Information

www.novusbio.com
Technical Support: nb-technical@bio-techne.com
Orders: nb-customerservice@bio-techne.com
General: novus@novusbio.com

Products Related to KA1840

NBP1-86509PEP	Coagulation Factor XIV/Protein C Recombinant Protein Antigen
210-TA-005	TNF-alpha [Unconjugated]
AF4885	Coagulation Factor XIV/Protein C Antibody
6507-IL-010/CF	IL-4 [Unconjugated]

Limitations

This product is for research use only and is not approved for use in humans or in clinical diagnosis. ELISA Kits are guaranteed for 6 months from date of receipt.

For more information on our 100% guarantee, please visit www.novusbio.com/guarantee

Earn gift cards/discounts by submitting a review: www.novusbio.com/reviews/submit/KA1840

Earn gift cards/discounts by submitting a publication using this product:
www.novusbio.com/publications

