

# Product Datasheet

## pan HDAC Assay Kit (Fluorometric)

### KA1319

Unit Size: 1 Kit

Storage of components varies. See protocol for specific instructions.

[www.novusbio.com](http://www.novusbio.com)



[technical@novusbio.com](mailto:technical@novusbio.com)

Protocols, Publications, Related Products, Reviews, Research Tools and Images at:  
[www.novusbio.com/KA1319](http://www.novusbio.com/KA1319)

Updated 10/23/2024 v.20.1

Earn rewards for product  
reviews and publications.

Submit a publication at [www.novusbio.com/publications](http://www.novusbio.com/publications)

Submit a review at [www.novusbio.com/reviews/destination/KA1319](http://www.novusbio.com/reviews/destination/KA1319)



**KA1319****pan HDAC Assay Kit (Fluorometric)**

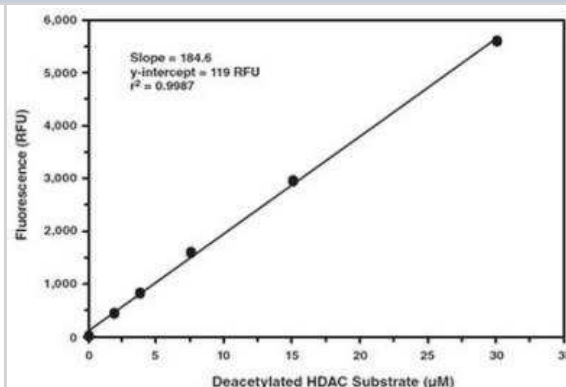
<b>Product Information</b>	
<b>Unit Size</b>	1 Kit
<b>Concentration</b>	Concentration is not relevant for this product. Please see the protocols for proper use of this product.
<b>Storage</b>	Storage of components varies. See protocol for specific instructions.

<b>Product Description</b>	
<b>Description</b>	Quality control test: Standard curve HDAC Cell-Based Assay Kit is a fluorescence-based method for assaying the activity of HDAC .
<b>Kit Components</b>	HDAC Assay Buffer (10X), Nonidet P-40 Assay Reagent (10%), HDAC Deacetylated Standard, HDAC1 Positive Control, Cell-Based Assay HDAC Substrate, HDAC Developer, HDAC Trichostatin A, 96-Well Clear Bottom Black Culture Plate
<b>Notes</b>	This product is produced by and distributed for Abnova, a company based in Taiwan.
<b>Standard Curve Range</b>	1.88 $\mu$ M to 0 30 $\mu$ M
<b>Assay Type</b>	Fluorometric
<b>Suitable Sample Type</b>	Cultured Cells
<b>Sample Volume</b>	5 x 10 <sup>4</sup> cells per well. All Treatments conditions should be assayed in duplicate at minimum.

<b>Product Application Details</b>	
<b>Applications</b>	Functional
<b>Recommended Dilutions</b>	Functional

**Images**

pan HDAC Assay Kit (Fluorometric) [KA1319] - The standard curve is for the purpose of illustration only and should not be used to calculate unknowns. A standard curve should be generated each time the assay is performed.





### **Novus Biologicals USA**

10730 E. Briarwood Avenue  
Centennial, CO 80112  
USA  
Phone: 303.730.1950  
Toll Free: 1.888.506.6887  
Fax: 303.730.1966  
nb-customerservice@bio-techne.com

### **Bio-Techne Canada**

21 Canmotor Ave  
Toronto, ON M8Z 4E6  
Canada  
Phone: 905.827.6400  
Toll Free: 855.668.8722  
Fax: 905.827.6402  
canada.inquires@bio-techne.com

### **Bio-Techne Ltd**

19 Barton Lane  
Abingdon Science Park  
Abingdon, OX14 3NB, United Kingdom  
Phone: (44) (0) 1235 529449  
Free Phone: 0800 37 34 15  
Fax: (44) (0) 1235 533420  
info.EMEA@bio-techne.com

### **General Contact Information**

www.novusbio.com  
Technical Support: nb-technical@bio-  
techne.com  
Orders: nb-customerservice@bio-techne.com  
General: novus@novusbio.com

### **Limitations**

This product is for research use only and is not approved for use in humans or in clinical diagnosis. Kits are guaranteed for 6 months from date of receipt.

For more information on our 100% guarantee, please visit [www.novusbio.com/guarantee](http://www.novusbio.com/guarantee)

Earn gift cards/discounts by submitting a review: [www.novusbio.com/reviews/submit/KA1319](http://www.novusbio.com/reviews/submit/KA1319)

Earn gift cards/discounts by submitting a publication using this product:  
[www.novusbio.com/publications](http://www.novusbio.com/publications)

