

Product Datasheet

sPLA2 Activity Assay Kit (Colorimetric) KA1015

Unit Size: 1 Kit

Storage of components varies. See protocol for specific instructions.

www.novusbio.com



technical@novusbio.com

Protocols, Publications, Related Products, Reviews, Research Tools and Images at:
www.novusbio.com/KA1015

Updated 10/23/2024 v.20.1

Earn rewards for product
reviews and publications.

Submit a publication at www.novusbio.com/publications

Submit a review at www.novusbio.com/reviews/destination/KA1015



KA1015**sPLA2 Activity Assay Kit (Colorimetric)**

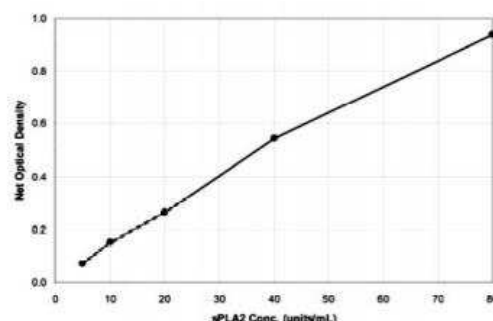
Product Information	
Unit Size	1 Kit
Concentration	Concentration is not relevant for this product. Please see the protocols for proper use of this product.
Storage	Storage of components varies. See protocol for specific instructions.

Product Description	
Description	Quality control test: Standard curve sPLA2 activity Kit is a higher throughput assay for the quantitative measurement of sPLA2 in culture supernatants, cell lysates, and buffers from any species.
Kit Components	Microtiter Plate, sPLA2 Standard, sPLA2 Reaction Buffer Concentrate, sPLA2 Substrate, Stop Reagent, sPLA2 Color Reagent, Plate Sealer
Notes	This product is produced by and distributed for Abnova, a company based in Taiwan.
Standard Curve Range	5 to 80 Units/mL
Assay Type	Colorimetric
Suitable Sample Type	Cell Lysate, Culture Supernatant
Sample Volume	50 uL

Product Application Details	
Applications	Quantification
Recommended Dilutions	Quantification

Images

sPLA2 Assay Kit (Colorimetric) [KA1015] - The standard curve is for the purpose of illustration only and should not be used to calculate unknowns. A standard curve should be generated each time the assay is performed.





Novus Biologicals USA

10730 E. Briarwood Avenue
Centennial, CO 80112
USA
Phone: 303.730.1950
Toll Free: 1.888.506.6887
Fax: 303.730.1966
nb-customerservice@bio-techne.com

Bio-Techne Canada

21 Canmotor Ave
Toronto, ON M8Z 4E6
Canada
Phone: 905.827.6400
Toll Free: 855.668.8722
Fax: 905.827.6402
canada.inquires@bio-techne.com

Bio-Techne Ltd

19 Barton Lane
Abingdon Science Park
Abingdon, OX14 3NB, United Kingdom
Phone: (44) (0) 1235 529449
Free Phone: 0800 37 34 15
Fax: (44) (0) 1235 533420
info.EMEA@bio-techne.com

General Contact Information

www.novusbio.com
Technical Support: nb-technical@bio-techne.com
Orders: nb-customerservice@bio-techne.com
General: novus@novusbio.com

Limitations

This product is for research use only and is not approved for use in humans or in clinical diagnosis. Kits are guaranteed for 6 months from date of receipt.

For more information on our 100% guarantee, please visit www.novusbio.com/guarantee

Earn gift cards/discounts by submitting a review: www.novusbio.com/reviews/submit/KA1015

Earn gift cards/discounts by submitting a publication using this product:
www.novusbio.com/publications

