

Product Datasheet

Human HAMA ELISA Kit (Colorimetric) KA1010

Unit Size: 1 Kit

Store at 4C.

www.novusbio.com



technical@novusbio.com

Publications: 3

Protocols, Publications, Related Products, Reviews, Research Tools and Images at:
www.novusbio.com/KA1010

Updated 10/23/2024 v.20.1

Earn rewards for product
reviews and publications.

Submit a publication at www.novusbio.com/publications

Submit a review at www.novusbio.com/reviews/destination/KA1010



KA1010**Human HAMA ELISA Kit (Colorimetric)****Product Information**

Unit Size	1 Kit
Concentration	Concentration is not relevant for this product. Please see the protocols for proper use of this product.
Storage	Store at 4C.

Product Description

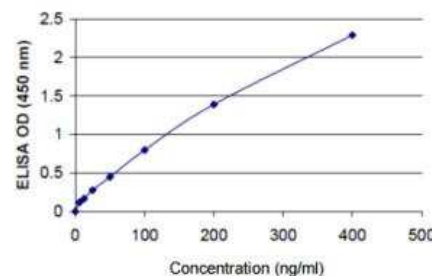
Description	Quality control test: Standard curve. HAMA (Human) ELISA Kit is a sandwich enzyme immunoassay for the quantitative measurement of human anti-mouse antibody.
Species	Human
Kit Components	HAMA Microtiter plate, Pre-coated with mouse IgG, HRP Conjugate, HRP conjugate to Mouse IgG, HAMA Standard, Rabbit anti Mouse IgG antibody (800 ng/vial) in a buffered protein base with Preservative, lyophilized., Calibrator diluent, Animal serum with buffer and preservative., Wash Buffer (20x), 20-fold concentrated solution of buffered surfactant., Substrate A, Buffered solution with H ₂ O ₂ ., Substrate B, Buffered solution with TMB., Stop solution, 2N Sulphuric Acid (H ₂ SO ₄). Caution: Caustic Material!
Notes	This product is produced by and distributed for Abnova, a company based in Taiwan.
Standard Curve Range	3 to 360 ng/mL
Sensitivity	3 ng/mL
Inter Assay	CV% < 8.30%
Intra Assay	CV% < 9.03%
Assay Type	Sandwich ELISA
Suitable Sample Type	Serum
Sample Volume	100 uL

Product Application Details

Applications	ELISA, Quantification
Recommended Dilutions	ELISA, Quantification

Images

ELISA: HAMA ELISA Kit [HRP] [KA1010] - Standard curve



Publications

Nussbaum S, Roth HJ. Human anti-mouse antibodies: pitfalls in tumor marker measurement and strategies for enhanced assay robustness; including results with Elecsys CEA. Anticancer Res. 2000-11-01 [PMID: 11326704]

Klee GG. Human anti-mouse antibodies. Arch Pathol Lab Med. 2000-06-01 [PMID: 10835540]

Masuda S, Iwasaki S, Tomaru U et al. Mechanism of Fcγ receptor-mediated trogocytosis-based false-positive results in flow cytometry. PLoS One. 2012-12-27 [PMID: 23300821]



Novus Biologicals USA

10730 E. Briarwood Avenue
Centennial, CO 80112
USA

Phone: 303.730.1950

Toll Free: 1.888.506.6887

Fax: 303.730.1966

nb-customerservice@bio-techne.com

Bio-Techne Canada

21 Canmotor Ave
Toronto, ON M8Z 4E6
Canada

Phone: 905.827.6400

Toll Free: 855.668.8722

Fax: 905.827.6402

canada.inquires@bio-techne.com

Bio-Techne Ltd

19 Barton Lane
Abingdon Science Park
Abingdon, OX14 3NB, United Kingdom

Phone: (44) (0) 1235 529449

Free Phone: 0800 37 34 15

Fax: (44) (0) 1235 533420

info.EMEA@bio-techne.com

General Contact Information

www.novusbio.com

Technical Support: nb-technical@bio-techne.com

Orders: nb-customerservice@bio-techne.com

General: novus@novusbio.com

Limitations

This product is for research use only and is not approved for use in humans or in clinical diagnosis. ELISA Kits are guaranteed for 6 months from date of receipt.

For more information on our 100% guarantee, please visit www.novusbio.com/guarantee

Earn gift cards/discounts by submitting a review: www.novusbio.com/reviews/submit/KA1010

Earn gift cards/discounts by submitting a publication using this product:
www.novusbio.com/publications

