

Product Datasheet

Mouse Osteopontin/OPN ELISA Kit (Colorimetric) KA0547

Unit Size: 1 Kit

Store at 4C short term. Aliquot and store at -20C long term. Avoid freeze-thaw cycles.

www.novusbio.com



technical@novusbio.com

Publications: 3

Protocols, Publications, Related Products, Reviews, Research Tools and Images at:
www.novusbio.com/KA0547

Updated 4/11/2021 v.20.1

Earn rewards for product
reviews and publications.

Submit a publication at www.novusbio.com/publications

Submit a review at www.novusbio.com/reviews/destination/KA0547



KA0547**Mouse Osteopontin/OPN ELISA Kit (Colorimetric)**

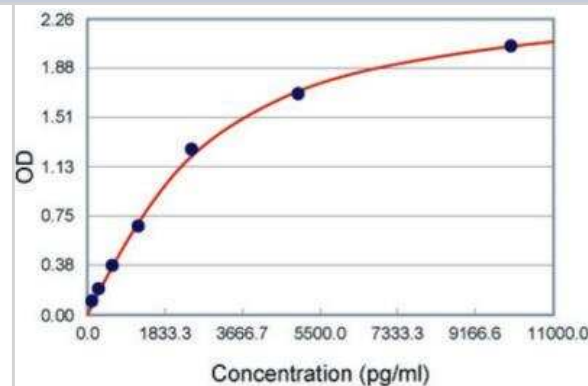
Product Information	
Unit Size	1 Kit
Concentration	Concentration is not relevant for this product. Please see the protocols for proper use of this product.
Storage	Store at 4C short term. Aliquot and store at -20C long term. Avoid freeze-thaw cycles.

Product Description	
Description	Spp1 (Mouse) ELISA Kit is a sandwich enzyme immunoassay for the quantitative measurement of mouse Spp1.
Gene ID	6696
Gene Symbol	SPP1
Species	Mouse
Kit Components	Antibody coated microwells, Lyophilized recombinant Mouse Spp1 standard, Sample diluent buffer:, Biotinylated anti- Mouse Spp1 antibody, Antibody diluent buffer, Avidin-Biotin-Peroxidase Complex (ABC), ABC diluent buffer, TMB color developing agent, TMB stop solution
Notes	This product is produced by and distributed for Abnova, a company based in Taiwan.
Standard Curve Range	156 to 10000 pg/mL
Sensitivity	<10 pg/mL
Assay Type	Sandwich ELISA
Suitable Sample Type	Cell Culture Supernatant, Plasma, Serum and Urine
Sample Volume	100 uL

Product Application Details	
Applications	ELISA, Quantification
Recommended Dilutions	ELISA, Quantification
Application Notes	Useful for quantification.

Images

ELISA: Mouse Osteopontin/OPN ELISA Kit (Colorimetric) [KA0547] - The standard curve is for the purpose of illustration only and should not be used to calculate unknowns. A standard curve should be generated each time the assay is performed.



Publications

Fisher LW, McBride OW, Termine JD, Young MF. Human bone sialoprotein. Deduced protein sequence and chromosomal localization. J Biol Chem. 1990-02-05 [PMID: 2404984]

Kohri K, Suzuki Y, Yoshida K et al. Molecular cloning and sequencing of cDNA encoding urinary stone protein, which is identical to osteopontin. Biochem Biophys Res Commun. 1992-04-30 [PMID: 1575754]

Beck GR Jr, Zerler B, Moran E. Phosphate is a specific signal for induction of osteopontin gene expression. Proc Natl Acad Sci U S A. 2000-07-18 [PMID: 10890885]



Novus Biologicals USA

10730 E. Briarwood Avenue
Centennial, CO 80112
USA

Phone: 303.730.1950

Toll Free: 1.888.506.6887

Fax: 303.730.1966

nb-customerservice@bio-techne.com

Bio-Techne Canada

21 Canmotor Ave
Toronto, ON M8Z 4E6
Canada

Phone: 905.827.6400

Toll Free: 855.668.8722

Fax: 905.827.6402

canada.inquires@bio-techne.com

Bio-Techne Ltd

19 Barton Lane
Abingdon Science Park
Abingdon, OX14 3NB, United Kingdom

Phone: (44) (0) 1235 529449

Free Phone: 0800 37 34 15

Fax: (44) (0) 1235 533420

info.EMEA@bio-techne.com

General Contact Information

www.novusbio.com

Technical Support: nb-technical@bio-techne.com

Orders: nb-customerservice@bio-techne.com

General: novus@novusbio.com

Limitations

This product is for research use only and is not approved for use in humans or in clinical diagnosis. ELISA Kits are guaranteed for 6 months from date of receipt.

For more information on our 100% guarantee, please visit www.novusbio.com/guarantee

Earn gift cards/discounts by submitting a review: www.novusbio.com/reviews/submit/KA0547

Earn gift cards/discounts by submitting a publication using this product:
www.novusbio.com/publications



