

Product Datasheet

Human Growth Hormone ELISA Kit (Colorimetric) KA0521

Unit Size: 1 Kit

Store at 4C.

www.novusbio.com



technical@novusbio.com

Publications: 2

Protocols, Publications, Related Products, Reviews, Research Tools and Images at:
www.novusbio.com/KA0521

Updated 6/27/2023 v.20.1

Earn rewards for product
reviews and publications.

Submit a publication at www.novusbio.com/publications

Submit a review at www.novusbio.com/reviews/destination/KA0521



KA0521**Human Growth Hormone ELISA Kit (Colorimetric)****Product Information**

Unit Size	1 Kit
Concentration	Concentration is not relevant for this product. Please see the protocols for proper use of this product.
Storage	Store at 4C.

Product Description

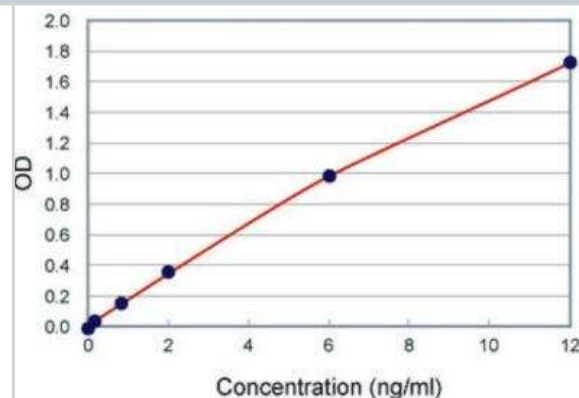
Description	Quality control test: Standard curve. GH (Human) High sensitivity ELISA Kit is a sandwich enzyme immunoassay for the quantitative measurement of GH.
Gene ID	2688
Gene Symbol	GH1
Species	Human
Kit Components	ANTIBODY COATED MICROWELLS, hGH CONJUGATE, hGH STANDARDS (12, 6, 2, 0.8, 0.2.0 ng/ml), SAMPLE DILUENT, WASH BUFFER (20X), SUBSTRATE A, SUBSTRATE B, STOP SOLUTION
Notes	This product is produced by and distributed for Abnova, a company based in Taiwan.
Standard Curve Range	0.1 to 12 ng/mL
Sensitivity	0.1 ng/mL
Assay Type	Sandwich ELISA
Suitable Sample Type	Serum
Sample Volume	50 uL

Product Application Details

Applications	ELISA, Quantification
Recommended Dilutions	ELISA, Quantification
Application Notes	Useful for quantification.

Images

ELISA: Human Growth Hormone ELISA Kit [KA0521] - The standard curve is for the purpose of illustration only and should not be used to calculate unknowns. A standard curve should be generated each time the assay is performed.



Publications

Frasier SD. Human pituitary growth hormone (hGH) therapy in growth hormone deficiency. Endocr Rev. 1983-01-01 [PMID: 6345147]

Smal J, Closset J, Hennen G, De Meyts P. The receptor binding properties of the 20K variant of human growth hormone explain its discrepant insulin-like and growth promoting activities. Biochem Biophys Res Commun. 1986-01-14 [PMID: 3004426]



Novus Biologicals USA

10730 E. Briarwood Avenue
Centennial, CO 80112
USA
Phone: 303.730.1950
Toll Free: 1.888.506.6887
Fax: 303.730.1966
nb-customerservice@bio-techne.com

Bio-Techne Canada

21 Canmotor Ave
Toronto, ON M8Z 4E6
Canada
Phone: 905.827.6400
Toll Free: 855.668.8722
Fax: 905.827.6402
canada.inquires@bio-techne.com

Bio-Techne Ltd

19 Barton Lane
Abingdon Science Park
Abingdon, OX14 3NB, United Kingdom
Phone: (44) (0) 1235 529449
Free Phone: 0800 37 34 15
Fax: (44) (0) 1235 533420
info.EMEA@bio-techne.com

General Contact Information

www.novusbio.com
Technical Support: nb-technical@bio-techne.com
Orders: nb-customerservice@bio-techne.com
General: novus@novusbio.com

Limitations

This product is for research use only and is not approved for use in humans or in clinical diagnosis. ELISA Kits are guaranteed for 6 months from date of receipt.

For more information on our 100% guarantee, please visit www.novusbio.com/guarantee

Earn gift cards/discounts by submitting a review: www.novusbio.com/reviews/submit/KA0521

Earn gift cards/discounts by submitting a publication using this product:

www.novusbio.com/publications

