

Product Datasheet

Human TFPI ELISA Kit (Colorimetric) KA0507

Unit Size: 1 Kit

Storage of components varies. See protocol for specific instructions.

www.novusbio.com



technical@novusbio.com

Publications: 3

Protocols, Publications, Related Products, Reviews, Research Tools and Images at:
www.novusbio.com/KA0507

Updated 6/27/2023 v.20.1

Earn rewards for product
reviews and publications.

Submit a publication at www.novusbio.com/publications

Submit a review at www.novusbio.com/reviews/destination/KA0507



KA0507**Human TFPI ELISA Kit (Colorimetric)**

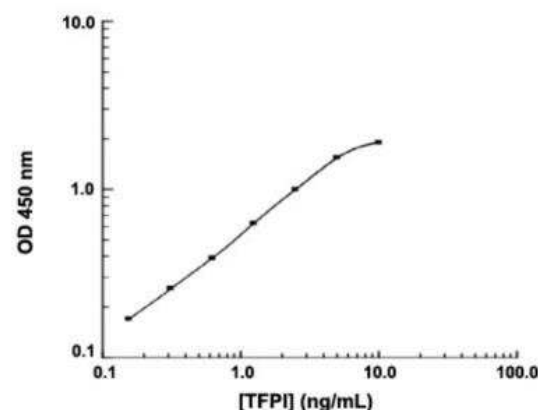
Product Information	
Unit Size	1 Kit
Concentration	Concentration is not relevant for this product. Please see the protocols for proper use of this product.
Storage	Storage of components varies. See protocol for specific instructions.

Product Description	
Description	Quality control test: Standard curve. TFPI (Human) ELISA Kit is a sandwich enzyme immunoassay for the quantitative measurement of human TFPI.
Gene ID	7035
Gene Symbol	TFPI
Species	Human
Kit Components	Antibody coated microwells, Human TFPI Standard, Biotinylated TFPI Antibody (100x), EIA Diluent Concentrate (10x), Wash Buffer Concentrate (20x), Streptavidin-Peroxidase Conjugate (SP Conjugate), Chromogen Substrate, Stop Solution
Notes	This product is produced by and distributed for Abnova, a company based in Taiwan.
Standard Curve Range	0.156 to 10 ng/mL
Sensitivity	81 pg/mL
Inter Assay	CV% < 7.3%
Intra Assay	CV% < 4.6%
Assay Type	Sandwich ELISA
Spiking Recovery	98.50%
Suitable Sample Type	Cell Culture Supernatant, CSF, Milk, Plasma, Serum
Sample Volume	50 uL

Product Application Details	
Applications	ELISA, Quantification
Recommended Dilutions	ELISA, Quantification
Application Notes	Useful for quantification.

Images

ELISA: Human TFPI ELISA Kit (Colorimetric) [KA0507] - The standard curve is for the purpose of illustration only and should not be used to calculate unknowns. A standard curve should be generated each time the assay is performed.



Publications

Broze GJ Jr. Tissue factor pathway inhibitor and the revised theory of coagulation. Annu Rev Med. 1995-01-01 [PMID: 7598447]

Novotny WF, Girard TJ, Miletich JP, Broze GJ Jr. Purification and characterization of the lipoprotein-associated coagulation inhibitor from human plasma. J Biol Chem. 1989-11-05 [PMID: 2553722]

Rapaport SI. The initiation of the tissue factor dependent pathway of blood coagulation. Adv Exp Med Biol. 1990-01-01 [PMID: 2102629]



Novus Biologicals USA

10730 E. Briarwood Avenue
Centennial, CO 80112
USA

Phone: 303.730.1950

Toll Free: 1.888.506.6887

Fax: 303.730.1966

nb-customerservice@bio-techne.com

Bio-Techne Canada

21 Canmotor Ave
Toronto, ON M8Z 4E6
Canada

Phone: 905.827.6400

Toll Free: 855.668.8722

Fax: 905.827.6402

canada.inquires@bio-techne.com

Bio-Techne Ltd

19 Barton Lane
Abingdon Science Park
Abingdon, OX14 3NB, United Kingdom

Phone: (44) (0) 1235 529449

Free Phone: 0800 37 34 15

Fax: (44) (0) 1235 533420

info.EMEA@bio-techne.com

General Contact Information

www.novusbio.com

Technical Support: nb-technical@bio-techne.com

Orders: nb-customerservice@bio-techne.com

General: novus@novusbio.com

Limitations

This product is for research use only and is not approved for use in humans or in clinical diagnosis. ELISA Kits are guaranteed for 6 months from date of receipt.

For more information on our 100% guarantee, please visit www.novusbio.com/guarantee

Earn gift cards/discounts by submitting a review: www.novusbio.com/reviews/submit/KA0507

Earn gift cards/discounts by submitting a publication using this product:
www.novusbio.com/publications



