

Product Datasheet

Human Endoglin/CD105 ELISA Kit (Colorimetric) KA0442

Unit Size: 1 Kit

Store at 4C short term. Aliquot and store at -20C long term. Avoid freeze-thaw cycles.

www.novusbio.com



technical@novusbio.com

Publications: 3

Protocols, Publications, Related Products, Reviews, Research Tools and Images at:
www.novusbio.com/KA0442

Updated 6/27/2023 v.20.1

Earn rewards for product
reviews and publications.

Submit a publication at www.novusbio.com/publications

Submit a review at www.novusbio.com/reviews/destination/KA0442



KA0442**Human Endoglin/CD105 ELISA Kit (Colorimetric)****Product Information**

Unit Size	1 Kit
Concentration	Concentration is not relevant for this product. Please see the protocols for proper use of this product.
Storage	Store at 4C short term. Aliquot and store at -20C long term. Avoid freeze-thaw cycles.

Product Description

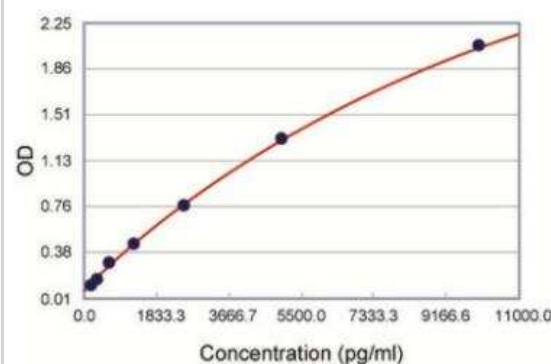
Description	Quality control test: Standard curve. ENG (Human) ELISA Kit is a sandwich enzyme immunoassay for the quantitative measurement of human ENG.
Gene ID	2022
Gene Symbol	ENG
Species	Human
Kit Components	Lyophilized recombinant human CD105 standard: 10ng/tube×2., One 96-well plate precoated with anti- human CD105 antibody., Sample diluent buffer: 30 ml, Biotinylated anti- human CD105 antibody: 130µl, dilution 1:100., Antibody diluent buffer: 12ml., Avidin-Biotin-Peroxidase Complex (ABC): 130µl, dilution 1:100., ABC diluent buffer: 12ml., TMB color developing agent: 10ml., TMB stop solution: 10ml.
Notes	This product is produced by and distributed for Abnova, a company based in Taiwan.
Standard Curve Range	156 to 10000 pg/mL
Sensitivity	<15 pg/mL
Assay Type	Sandwich ELISA
Suitable Sample Type	Body Fluid, Cell Culture Supernatant, Plasma, Serum, Tissue Lysate
Sample Volume	100 uL

Product Application Details

Applications	ELISA, Quantification
Recommended Dilutions	ELISA, Quantification
Application Notes	Useful for quantification.

Images

ELISA: Human Endoglin/CD105 ELISA Kit [KA0442] - These standard curves are provided for demonstration only. A standard curve should be generated for each set of samples assayed.



Publications

Rius C, Smith JD, Almendro N et al. Cloning of the promoter region of human endoglin, the target gene for hereditary hemorrhagic telangiectasia type 1. Blood. 1998-12-15 [PMID: 9845534]

Lebrin F, Goumans MJ, Jonker L et al. Endoglin promotes endothelial cell proliferation and TGF-beta/ALK1 signal transduction. EMBO J. 2004-10-13 [PMID: 15385967]

Grisanti S, Canbek S, Kaiserling E et al. Expression of endoglin in choroidal neovascularization. Exp Eye Res. 2004-02-01 [PMID: 14729353]



Novus Biologicals USA

10730 E. Briarwood Avenue
Centennial, CO 80112
USA

Phone: 303.730.1950

Toll Free: 1.888.506.6887

Fax: 303.730.1966

nb-customerservice@bio-techne.com

Bio-Techne Canada

21 Canmotor Ave
Toronto, ON M8Z 4E6
Canada

Phone: 905.827.6400

Toll Free: 855.668.8722

Fax: 905.827.6402

canada.inquires@bio-techne.com

Bio-Techne Ltd

19 Barton Lane
Abingdon Science Park
Abingdon, OX14 3NB, United Kingdom

Phone: (44) (0) 1235 529449

Free Phone: 0800 37 34 15

Fax: (44) (0) 1235 533420

info.EMEA@bio-techne.com

General Contact Information

www.novusbio.com

Technical Support: nb-technical@bio-techne.com

Orders: nb-customerservice@bio-techne.com

General: novus@novusbio.com

Limitations

This product is for research use only and is not approved for use in humans or in clinical diagnosis. ELISA Kits are guaranteed for 6 months from date of receipt.

For more information on our 100% guarantee, please visit www.novusbio.com/guarantee

Earn gift cards/discounts by submitting a review: www.novusbio.com/reviews/submit/KA0442

Earn gift cards/discounts by submitting a publication using this product:
www.novusbio.com/publications



