

Product Datasheet

WDR36 Antibody (1D6) - Azide and BSA Free H00134430-M01

Unit Size: 0.1 mg

Aliquot and store at -20C or -80C. Avoid freeze-thaw cycles.

www.novusbio.com



technical@novusbio.com

Publications: 3

Protocols, Publications, Related Products, Reviews, Research Tools and Images at:
www.novusbio.com/H00134430-M01

Updated 2/21/2025 v.20.1

Earn rewards for product
reviews and publications.

Submit a publication at www.novusbio.com/publications

Submit a review at www.novusbio.com/reviews/destination/H00134430-M01



H00134430-M01

WDR36 Antibody (1D6) - Azide and BSA Free

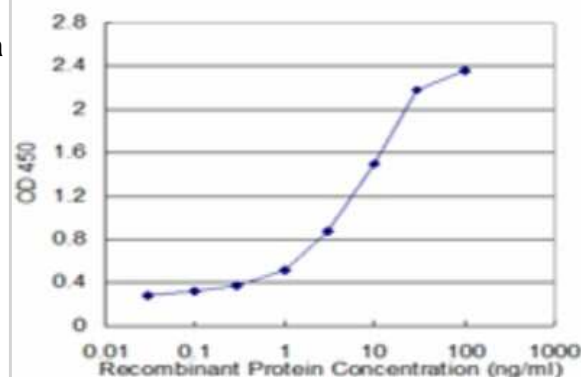
Product Information	
Unit Size	0.1 mg
Concentration	Concentrations vary lot to lot. See vial label for concentration. If unlisted please contact technical services.
Storage	Aliquot and store at -20C or -80C. Avoid freeze-thaw cycles.
Clonality	Monoclonal
Clone	1D6
Preservative	No Preservative
Isotype	IgG2a Kappa
Purity	IgG purified
Buffer	In 1x PBS, pH 7.4

Product Description	
Host	Mouse
Gene ID	134430
Gene Symbol	WDR36
Species	Human, Rat, Chicken, Monkey
Reactivity Notes	Human. Other species not tested.
Specificity/Sensitivity	WDR36 (1D6)
Immunogen	WDR36 (NP_644810, 853 a.a. ~ 951 a.a) partial recombinant protein with GST tag. MW of the GST tag alone is 26 KDa. SGIETELRSLSPDCGGSEVMQSF LKMIGMMLDRKRD FELAQAYLALFLKLHLK MLPSEPVLLEEITNLSSQVEENWTHLQSLFNQSMCILNYLKSALL
Notes	This product is produced by and distributed for Abnova, a company based in Taiwan.

Product Application Details	
Applications	Western Blot, ELISA, Immunocytochemistry/ Immunofluorescence, Sandwich ELISA
Recommended Dilutions	Western Blot 1:500, ELISA, Immunocytochemistry/ Immunofluorescence, Sandwich ELISA
Application Notes	Antibody Reactive against Recombinant Protein with GST tag on ELISA and Western Blot. GST tag alone is used as a negative control.

Images

Sandwich ELISA: WDR36 Antibody (1D6) [H00134430-M01] - Detection limit for recombinant GST tagged WDR36 is approximately 0.3ng/ml as a capture antibody.



Publications

Lin YP, Chen LR, Chen CF et al. Identification of early transcripts related to male development in chicken embryos. *Theriogenology* 2010-08-20 [PMID: 20728927]

Cartier A, Parent A, Labrecque P et al. WDR36 acts as a scaffold protein tethering a G-protein-coupled receptor, G α_q and phospholipase C β in a signalling complex. *J Cell Sci.* 2011-10-01 [PMID: 21940795]

Footz TK, Johnson JL, Dubois S et al. Glaucoma-associated WDR36 variants encode functional defects in a yeast model system. *Hum Mol Genet* 18(7):1276-87. 2009-04-01 [PMID: 19150991]





Novus Biologicals USA

10730 E. Briarwood Avenue
Centennial, CO 80112
USA
Phone: 303.730.1950
Toll Free: 1.888.506.6887
Fax: 303.730.1966
nb-customerservice@bio-techne.com

Bio-Techne Canada

21 Canmotor Ave
Toronto, ON M8Z 4E6
Canada
Phone: 905.827.6400
Toll Free: 855.668.8722
Fax: 905.827.6402
canada.inquires@bio-techne.com

Bio-Techne Ltd

19 Barton Lane
Abingdon Science Park
Abingdon, OX14 3NB, United Kingdom
Phone: (44) (0) 1235 529449
Free Phone: 0800 37 34 15
Fax: (44) (0) 1235 533420
info.EMEA@bio-techne.com

General Contact Information

www.novusbio.com
Technical Support: nb-technical@bio-techne.com
Orders: nb-customerservice@bio-techne.com
General: novus@novusbio.com

Products Related to H00134430-M01

HAF007	Goat anti-Mouse IgG Secondary Antibody [HRP]
NB720-B	Rabbit anti-Mouse IgG (H+L) Secondary Antibody [Biotin]
NBP1-96981-0.5mg	Mouse IgG2a Kappa Isotype Control (M2AK)
NBP1-83362PEP	WDR36 Recombinant Protein Antigen

Limitations

This product is for research use only and is not approved for use in humans or in clinical diagnosis. Primary Antibodies are guaranteed for 1 year from date of receipt.

For more information on our 100% guarantee, please visit www.novusbio.com/guarantee

Earn gift cards/discounts by submitting a review: www.novusbio.com/reviews/submit/H00134430-M01

Earn gift cards/discounts by submitting a publication using this product:
www.novusbio.com/publications

