

Product Datasheet

TOE1 Antibody (1D4) H00114034-M03

Unit Size: 0.05 mg

Aliquot and store at -20C or -80C. Avoid freeze-thaw cycles.

www.novusbio.com



technical@novusbio.com

Protocols, Publications, Related Products, Reviews, Research Tools and Images at:
www.novusbio.com/H00114034-M03

Updated 5/13/2021 v.20.1

Earn rewards for product
reviews and publications.

Submit a publication at www.novusbio.com/publications

Submit a review at www.novusbio.com/reviews/destination/H00114034-M03



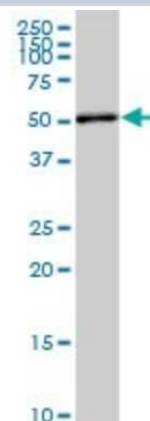
H00114034-M03

TOE1 Antibody (1D4)

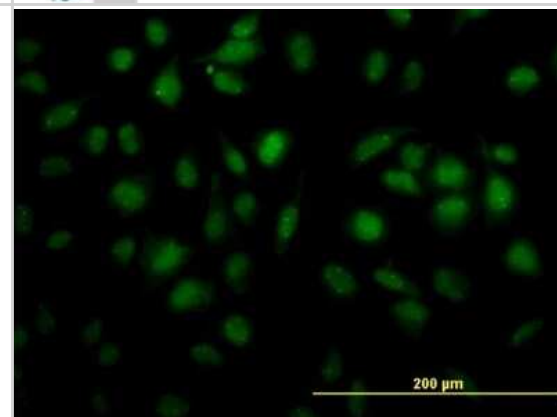
Product Information	
Unit Size	0.05 mg
Concentration	This product is unpurified. The exact concentration of antibody is not quantifiable.
Storage	Aliquot and store at -20C or -80C. Avoid freeze-thaw cycles.
Clonality	Monoclonal
Clone	1D4
Preservative	No Preservative
Isotype	IgG1 Kappa
Purity	Ascites
Buffer	In 1x PBS, pH 7.4
Product Description	
Host	Mouse
Gene ID	114034
Gene Symbol	TOE1
Species	Human
Specificity/Sensitivity	TOE1 - target of EGR1, member 1 (nuclear) (1D4)
Immunogen	TOE1 (AAH09364, 1 a.a. ~ 510 a.a) full-length recombinant protein with GST tag. MW of the GST tag alone is 26 KDa. MAADSDDGAVSAPAASDGGVSKSTTSGEELVVQVPVVDVQSNNFKEMWPSL LLAIKTANFVAVDTELSGLGDRKSLNQCIEERYKAVCHAARTRSILSLGLACFK RQPDKGEHSYLAQVFNLTLCCMEEYVIEPKSVQFLIQHGFNFNQQYAQQGIPYHK GNDKGDESQSQSVRTLFLLELIRARRPLVLHNLIDLVLFLYQNFYAHLPESLGTFT ADLCEMFPAGIYDTKYAAEFHARFVASYLEYAFRKCERENGKQRAAGSPHLTL EFCNYPSSMRDHIDYRCCLPPATHRPHPTSICDNFSAYGWCPLGPQCPQSHDI DLIIDTDEAAAEDKRRRRRRREKRKRALLNLPQTQTSGEAKDGPCKQVCGDSI KPEETEQAEEVADETRNLPHSKQGNKNDLEMGIKAAARPEIADRATSEVPGSQAS PNPVPGDGLHRAGFDAFMTGYVMAYVEVSQGPQPCSSGPWLPECHNKVYLS GKAVPLTVAKSQFSRSSKAHNQKMKLTWGSS
Notes	This product is produced by and distributed for Abnova, a company based in Taiwan.
Product Application Details	
Applications	Western Blot, ELISA, Immunocytochemistry/Immunofluorescence
Recommended Dilutions	Western Blot 1:500, ELISA, Immunocytochemistry/Immunofluorescence
Application Notes	Antibody reactive against transfected lysate and recombinant protein for Western Blot. Has also been used for immunofluorescence and ELISA.

Images

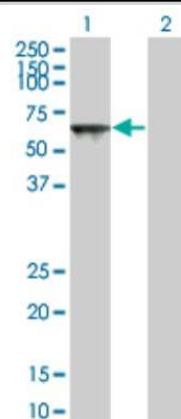
Western Blot: TOE1 Antibody (1D4) [H00114034-M03] - Analysis of TOE1 expression in human pancreas.



Immunocytochemistry/Immunofluorescence: TOE1 Antibody (1D4) [H00114034-M03] - Analysis of monoclonal antibody to TOE1 on HeLa cell. Antibody concentration 25 ug/ml



Western Blot: TOE1 Antibody (1D4) [H00114034-M03] - Analysis of TOE1 expression in transfected 293T cell line by TOE1 monoclonal antibody (M03), clone 1D4. Lane 1: TOE1 transfected lysate (56.548 KDa). Lane 2: Non-transfected lysate.





Novus Biologicals USA

10730 E. Briarwood Avenue
Centennial, CO 80112
USA

Phone: 303.730.1950
Toll Free: 1.888.506.6887
Fax: 303.730.1966
novus@novusbio.com

Bio-Techne Canada

21 Canmotor Ave
Toronto, ON M8Z 4E6
Canada

Phone: 905.827.6400
Toll Free: 855.668.8722
Fax: 905.827.6402
canada.inquires@bio-techne.com

Bio-Techne Ltd

19 Barton Lane
Abingdon Science Park
Abingdon, OX14 3NB, United Kingdom

Phone: (44) (0) 1235 529449
Free Phone: 0800 37 34 15
Fax: (44) (0) 1235 533420
info.EMEA@bio-techne.com

General Contact Information

www.novusbio.com
Technical Support: technical@novusbio.com
Orders: orders@novusbio.com
General: novus@novusbio.com

Limitations

This product is for research use only and is not approved for use in humans or in clinical diagnosis. Primary Antibodies are guaranteed for 1 year from date of receipt.

For more information on our 100% guarantee, please visit www.novusbio.com/guarantee

Earn gift cards/discounts by submitting a review: www.novusbio.com/reviews/submit/H00114034-M03

Earn gift cards/discounts by submitting a publication using this product:
www.novusbio.com/publications

