

Product Datasheet

MYLK2 Antibody (2G1) - Azide and BSA Free H00085366-M01

Unit Size: 0.1 mg

Aliquot and store at -20C or -80C. Avoid freeze-thaw cycles.

www.novusbio.com



technical@novusbio.com

Reviews: 1

Protocols, Publications, Related Products, Reviews, Research Tools and Images at:
www.novusbio.com/H00085366-M01

Updated 2/21/2025 v.20.1

**Earn rewards for product
reviews and publications.**

Submit a publication at www.novusbio.com/publications

Submit a review at www.novusbio.com/reviews/destination/H00085366-M01



H00085366-M01

MYLK2 Antibody (2G1) - Azide and BSA Free

Product Information	
Unit Size	0.1 mg
Concentration	Concentrations vary lot to lot. See vial label for concentration. If unlisted please contact technical services.
Storage	Aliquot and store at -20C or -80C. Avoid freeze-thaw cycles.
Clonality	Monoclonal
Clone	2G1
Preservative	No Preservative
Isotype	IgG1 Kappa
Purity	IgG purified
Buffer	In 1x PBS, pH 7.4
Product Description	
Host	Mouse
Gene ID	85366
Gene Symbol	MYLK2
Species	Human, Mouse
Reactivity Notes	Human. Other species not tested.
Specificity/Sensitivity	MYLK2 - myosin light chain kinase 2, skeletal muscle
Immunogen	MYLK2 (NP_149109, 161 a.a. ~ 260 a.a) partial recombinant protein with GST tag. MW of the GST tag alone is 26 KDa. KLLAKKPPSEASELTFEGVPMTHSPTDPRPAKAEKGKNILAESQKEVGKTPG QAGQAKMQGDTSRGIEFQAVPSEKSEVGQALCLTAREEDCFQILDDC
Notes	This product is produced by and distributed for Abnova, a company based in Taiwan.
Product Application Details	
Applications	Western Blot, ELISA, Knockdown Validated
Recommended Dilutions	Western Blot, ELISA, Knockdown Validated
Application Notes	Antibody reactive against recombinant protein with GST tag on ELISA and Western Blot. GST tag alone is used as a negative control. It has also been used for RNAi validation.

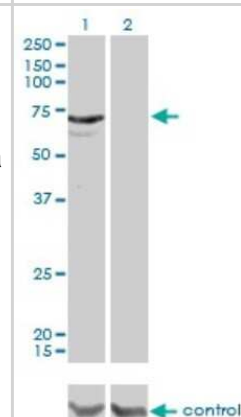


Images

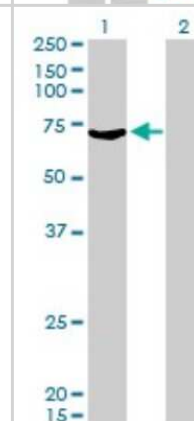
Western Blot: MYLK2 Antibody (2G1) [H00085366-M01] - The antibody was tested in mouse skeletal muscle and shows a band below 75 kDa. This image was submitted via customer Review. *{Mouse WB}*



Western Blot: MYLK2 Antibody (2G1) [H00085366-M01] - Analysis of MYLK2 over-expressed 293 cell line, cotransfected with MYLK2 Validated Chimera RNAi (Cat # H00085366-R01V) (Lane 2) or non-transfected control (Lane 1). Blot probed with MYLK2 monoclonal antibody (M01), clone 2G1 (Cat # H00085366-M01). GAPDH (36.1 kDa) used as specificity and loading control.



Western Blot: MYLK2 Antibody (2G1) [H00085366-M01] - Analysis of MYLK2 expression in transfected 293T cell line by MYLK2 monoclonal antibody (M01), clone 2G1. Lane 1: MYLK2 transfected lysate (64.7 kDa). Lane 2: Non-transfected lysate.



**Novus Biologicals USA**

10730 E. Briarwood Avenue
Centennial, CO 80112
USA
Phone: 303.730.1950
Toll Free: 1.888.506.6887
Fax: 303.730.1966
nb-customerservice@bio-techne.com

Bio-Techne Canada

21 Canmotor Ave
Toronto, ON M8Z 4E6
Canada
Phone: 905.827.6400
Toll Free: 855.668.8722
Fax: 905.827.6402
canada.inquires@bio-techne.com

Bio-Techne Ltd

19 Barton Lane
Abingdon Science Park
Abingdon, OX14 3NB, United Kingdom
Phone: (44) (0) 1235 529449
Free Phone: 0800 37 34 15
Fax: (44) (0) 1235 533420
info.EMEA@bio-techne.com

General Contact Information

www.novusbio.com
Technical Support: nb-technical@bio-techne.com
Orders: nb-customerservice@bio-techne.com
General: novus@novusbio.com

Products Related to H00085366-M01

HAF007	Goat anti-Mouse IgG Secondary Antibody [HRP]
NB720-B	Rabbit anti-Mouse IgG (H+L) Secondary Antibody [Biotin]
NBP1-43319-0.5mg	Mouse IgG1 Kappa Isotype Control (P3.6.2.8.1)
NBP2-32497PEP	MYLK2 Recombinant Protein Antigen

Limitations

This product is for research use only and is not approved for use in humans or in clinical diagnosis. Primary Antibodies are guaranteed for 1 year from date of receipt.

For more information on our 100% guarantee, please visit www.novusbio.com/guarantee

Earn gift cards/discounts by submitting a review: www.novusbio.com/reviews/submit/H00085366-M01

Earn gift cards/discounts by submitting a publication using this product:
www.novusbio.com/publications

