

# Product Datasheet

## **BIN3 Antibody (1H8) H00055909-M02A**

Unit Size: 0.2 ml

Aliquot and store at -20C or -80C. Avoid freeze-thaw cycles.

[www.novusbio.com](http://www.novusbio.com)



[technical@novusbio.com](mailto:technical@novusbio.com)

Protocols, Publications, Related Products, Reviews, Research Tools and Images at:  
[www.novusbio.com/H00055909-M02A](http://www.novusbio.com/H00055909-M02A)

Updated 5/13/2021 v.20.1

**Earn rewards for product  
reviews and publications.**

Submit a publication at [www.novusbio.com/publications](http://www.novusbio.com/publications)

Submit a review at [www.novusbio.com/reviews/destination/H00055909-M02A](http://www.novusbio.com/reviews/destination/H00055909-M02A)



**H00055909-M02A**

BIN3 Antibody (1H8)

**Product Information**

<b>Unit Size</b>	0.2 ml
<b>Concentration</b>	This product is unpurified. The exact concentration of antibody is not quantifiable.
<b>Storage</b>	Aliquot and store at -20C or -80C. Avoid freeze-thaw cycles.
<b>Clonality</b>	Monoclonal
<b>Clone</b>	1H8
<b>Preservative</b>	No Preservative
<b>Isotype</b>	IgG2a Kappa
<b>Purity</b>	Unpurified
<b>Buffer</b>	Ascites

**Product Description**

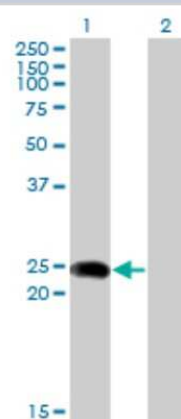
<b>Host</b>	Mouse
<b>Gene ID</b>	55909
<b>Gene Symbol</b>	BIN3
<b>Species</b>	Human
<b>Specificity/Sensitivity</b>	BIN3 - bridging integrator 3 (1H8)
<b>Immunogen</b>	BIN3 (AAH01223, 1 a.a. ~ 199 a.a) full-length recombinant protein with GST tag. MW of the GST tag alone is 26 KDa. MSKSAVKISLDLLSNPLCEQDQDLLNMVTALDTAMKRMDAFNQEKVNQIQKTVI EPLKKFGSVFPSLNMAVKRREQALQDYRRQLQAKVEKYEEKEKTGPVLAKLHQA REELRPVREDFEAKNRQLLEEMPRFYGSRLDYFQPSFESLIRAQVVYYSEMHK IFGDLSHQLDQPGHSDEQRERENEAKLSELRLSIVADD
<b>Notes</b>	This product is produced by and distributed for Abnova, a company based in Taiwan.

**Product Application Details**

<b>Applications</b>	Western Blot, ELISA
<b>Recommended Dilutions</b>	Western Blot 1:500, ELISA
<b>Application Notes</b>	Antibody Reactive Against Recombinant Protein with GST tag on ELISA and Western Blot. GST tag alone is used as a negative control.

**Images**

Western Blot: BIN3 Antibody (1H8) [H00055909-M02A] - Analysis of BIN3 expression in transfected 293T cell line by BIN3 monoclonal antibody (M02A), clone 1H8. Lane 1: BIN3 transfected lysate (23.2 KDa). Lane 2: Non-transfected lysate.





### **Novus Biologicals USA**

10730 E. Briarwood Avenue  
Centennial, CO 80112  
USA  
Phone: 303.730.1950  
Toll Free: 1.888.506.6887  
Fax: 303.730.1966  
novus@novusbio.com

### **Bio-Techne Canada**

21 Canmotor Ave  
Toronto, ON M8Z 4E6  
Canada  
Phone: 905.827.6400  
Toll Free: 855.668.8722  
Fax: 905.827.6402  
canada.inquires@bio-techne.com

### **Bio-Techne Ltd**

19 Barton Lane  
Abingdon Science Park  
Abingdon, OX14 3NB, United Kingdom  
Phone: (44) (0) 1235 529449  
Free Phone: 0800 37 34 15  
Fax: (44) (0) 1235 533420  
info.EMEA@bio-techne.com

### **General Contact Information**

www.novusbio.com  
Technical Support: technical@novusbio.com  
Orders: orders@novusbio.com  
General: novus@novusbio.com

### **Limitations**

This product is for research use only and is not approved for use in humans or in clinical diagnosis. Primary Antibodies are guaranteed for 1 year from date of receipt.

For more information on our 100% guarantee, please visit [www.novusbio.com/guarantee](http://www.novusbio.com/guarantee)

Earn gift cards/discounts by submitting a review: [www.novusbio.com/reviews/submit/H00055909-M02A](http://www.novusbio.com/reviews/submit/H00055909-M02A)

Earn gift cards/discounts by submitting a publication using this product:  
[www.novusbio.com/publications](http://www.novusbio.com/publications)

