

Product Datasheet

RAB23 Antibody Pair H00051715-AP22

Unit Size: 1 Set

Aliquot and store at -20C or -80C. Avoid freeze-thaw cycles.

www.novusbio.com



technical@novusbio.com

Protocols, Publications, Related Products, Reviews, Research Tools and Images at:
www.novusbio.com/H00051715-AP22

Updated 10/27/2019 v.20.1

Earn rewards for product
reviews and publications.

Submit a publication at www.novusbio.com/publications

Submit a review at www.novusbio.com/reviews/destination/H00051715-AP22



H00051715-AP22**RAB23 Antibody Pair**

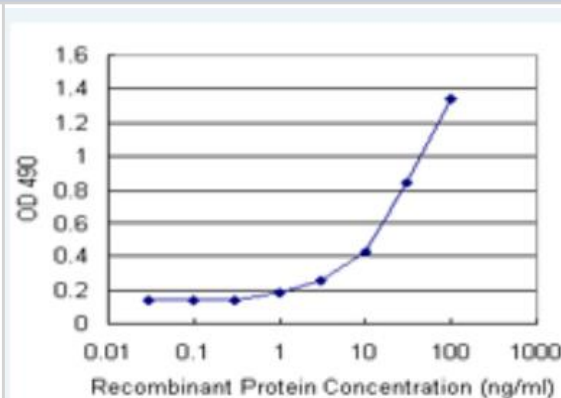
| Product Information | |
|----------------------------|---|
| Unit Size | 1 Set |
| Concentration | Concentration of individual antibodies may be found on the vial label. If unlisted please contact technical services. |
| Storage | Aliquot and store at -20C or -80C. Avoid freeze-thaw cycles. |
| Clonality | Monoclonal |
| Preservative | No Preservative |
| Purity | Immunogen affinity purified |
| Buffer | 1x PBS, pH 7.4 |

| Product Description | |
|-----------------------------|--|
| Description | This antibody pair set comes with matched antibody pair to detect and quantify protein level of human RAB23. Capture antibody: rabbit MaxPab affinity purified polyclonal anti-RAB23 (100 ug) Detection antibody: mouse purified polyclonal anti-RAB23 (20 ug) |
| Gene ID | 51715 |
| Gene Symbol | RAB23 |
| Species | Human |
| Notes | Quality control test: Standard curve using recombinant protein (H00051715-P01) as an analyte. This product is produced by and distributed for Abnova, a company based in Taiwan. |
| Standard Curve Range | 1 ng/ml to 100 ng/ml |
| Assay Type | Sandwich ELISA |

| Product Application Details | |
|------------------------------------|------------------------------------|
| Applications | Sandwich ELISA |
| Recommended Dilutions | Sandwich ELISA 1 ng/ml - 100 ng/ml |

Images

Sandwich ELISA: RAB23 Antibody Pair [H00051715-AP22] - Detection sensitivity ranging from 1 ng/ml to 100 ng/ml.





Novus Biologicals USA

10730 E. Briarwood Avenue
Centennial, CO 80112
USA

Phone: 303.730.1950
Toll Free: 1.888.506.6887
Fax: 303.730.1966
novus@novusbio.com

Novus Biologicals Canada

461 North Service Road West, Unit B37
Oakville, ON L6M 2V5
Canada

Phone: 905.827.6400
Toll Free: 855.668.8722
Fax: 905.827.6402
canada@novusbio.com

Novus Biologicals Europe

19 Barton Lane
Abingdon Science Park
Abingdon, OX14 3NB, United Kingdom

Phone: (44) (0) 1235 529449
Free Phone: 0800 37 34 15
Fax: (44) (0) 1235 533420
info@bio-techne.com

General Contact Information

www.novusbio.com
Technical Support: technical@novusbio.com
Orders: orders@novusbio.com
General: novus@novusbio.com

Limitations

This product is for research use only and is not approved for use in humans or in clinical diagnosis. Antibody Pairs are guaranteed for 6 months from date of receipt.

For more information on our 100% guarantee, please visit www.novusbio.com/guarantee

Earn gift cards/discounts by submitting a review: www.novusbio.com/reviews/submit/H00051715-AP22

Earn gift cards/discounts by submitting a publication using this product:
www.novusbio.com/publications

