

# Product Datasheet

## LEF1 Antibody (1A8) H00051176-M06

Unit Size: 0.1 mg

Aliquot and store at -20C or -80C. Avoid freeze-thaw cycles.

[www.novusbio.com](http://www.novusbio.com)



[technical@novusbio.com](mailto:technical@novusbio.com)

Protocols, Publications, Related Products, Reviews, Research Tools and Images at:  
[www.novusbio.com/H00051176-M06](http://www.novusbio.com/H00051176-M06)

Updated 7/16/2023 v.20.1

Earn rewards for product  
reviews and publications.

Submit a publication at [www.novusbio.com/publications](http://www.novusbio.com/publications)

Submit a review at [www.novusbio.com/reviews/destination/H00051176-M06](http://www.novusbio.com/reviews/destination/H00051176-M06)



**H00051176-M06**

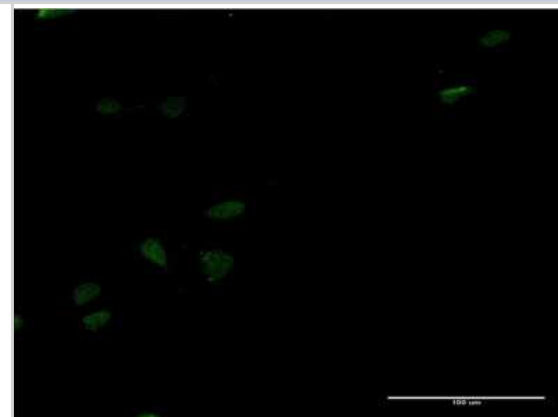
LEF1 Antibody (1A8)

Product Information	
Unit Size	0.1 mg
Concentration	Concentrations vary lot to lot. See vial label for concentration. If unlisted please contact technical services.
Storage	Aliquot and store at -20C or -80C. Avoid freeze-thaw cycles.
Clonality	Monoclonal
Clone	1A8
Preservative	No Preservative
Isotype	IgG2a Kappa
Purity	IgG purified
Buffer	In 1x PBS, pH 7.4
Product Description	
Host	Mouse
Gene ID	51176
Gene Symbol	LEF1
Species	Human
Reactivity Notes	Human. Other species not tested.
Specificity/Sensitivity	LEF1 (1A8)
Immunogen	LEF1 (NP_057353, 33 a.a. ~ 138 a.a) full-length recombinant protein with GST tag. MW of the GST tag alone is 26 KDa. QKEKIFAEISHPEEEGLADIKSSLVNESEIIPASNGHEVARQAQTSQEPYHDKA REHPDDGKHPDGGGLYNKGPSYSSYSGYIMMPNMNNDPYMSNGSLSPPIPT
Notes	This product is produced by and distributed for Abnova, a company based in Taiwan.
Product Application Details	
Applications	Western Blot, ELISA, Immunocytochemistry/Immunofluorescence
Recommended Dilutions	Western Blot 1:500, ELISA, Immunocytochemistry/Immunofluorescence
Application Notes	Antibody Reactive against Recombinant Protein with GST tag on ELISA and Western Blot. GST tag alone is used as a negative control.

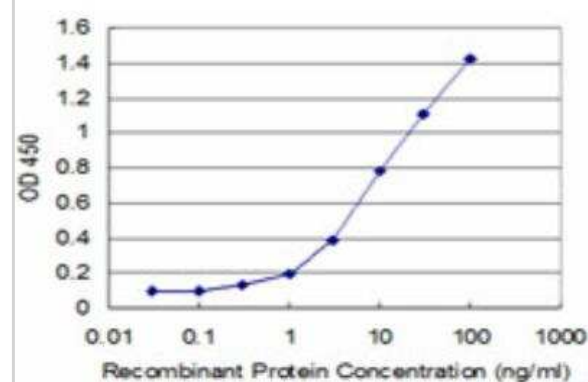


## Images

Immunocytochemistry/Immunofluorescence: LEF1 Antibody (1A8) [H00051176-M06] - Analysis of monoclonal antibody to LEF1 on HeLa cell. Antibody concentration 10 ug/ml



ELISA: LEF1 Antibody (1A8) [H00051176-M06] - Detection limit for recombinant GST tagged LEF1 is approximately 1 ng/ml as a capture antibody.





### **Novus Biologicals USA**

10730 E. Briarwood Avenue  
Centennial, CO 80112  
USA  
Phone: 303.730.1950  
Toll Free: 1.888.506.6887  
Fax: 303.730.1966  
novus@novusbio.com

### **Bio-Techne Canada**

21 Canmotor Ave  
Toronto, ON M8Z 4E6  
Canada  
Phone: 905.827.6400  
Toll Free: 855.668.8722  
Fax: 905.827.6402  
canada.inquires@bio-techne.com

### **Bio-Techne Ltd**

19 Barton Lane  
Abingdon Science Park  
Abingdon, OX14 3NB, United Kingdom  
Phone: (44) (0) 1235 529449  
Free Phone: 0800 37 34 15  
Fax: (44) (0) 1235 533420  
info.EMEA@bio-techne.com

### **General Contact Information**

www.novusbio.com  
Technical Support: technical@novusbio.com  
Orders: orders@novusbio.com  
General: novus@novusbio.com

### **Limitations**

This product is for research use only and is not approved for use in humans or in clinical diagnosis. Primary Antibodies are guaranteed for 1 year from date of receipt.

For more information on our 100% guarantee, please visit [www.novusbio.com/guarantee](http://www.novusbio.com/guarantee)

Earn gift cards/discounts by submitting a review: [www.novusbio.com/reviews/submit/H00051176-M06](http://www.novusbio.com/reviews/submit/H00051176-M06)

Earn gift cards/discounts by submitting a publication using this product:  
[www.novusbio.com/publications](http://www.novusbio.com/publications)

