

Product Datasheet

Fast skeletal myosin light chain 2 Antibody (3H3) - Azide and BSA Free H00029895-M05

Unit Size: 0.1 mg

Aliquot and store at -20C or -80C. Avoid freeze-thaw cycles.

www.novusbio.com



technical@novusbio.com

Protocols, Publications, Related Products, Reviews, Research Tools and Images at:
www.novusbio.com/H00029895-M05

Updated 2/21/2025 v.20.1

Earn rewards for product
reviews and publications.

Submit a publication at www.novusbio.com/publications

Submit a review at www.novusbio.com/reviews/destination/H00029895-M05



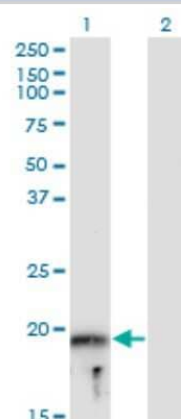
H00029895-M05

Fast skeletal myosin light chain 2 Antibody (3H3) - Azide and BSA Free

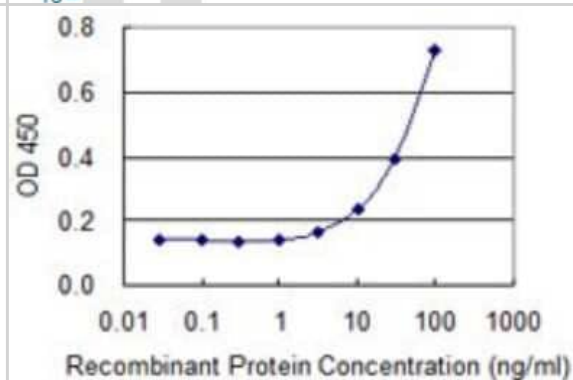
Product Information	
Unit Size	0.1 mg
Concentration	Concentrations vary lot to lot. See vial label for concentration. If unlisted please contact technical services.
Storage	Aliquot and store at -20C or -80C. Avoid freeze-thaw cycles.
Clonality	Monoclonal
Clone	3H3
Preservative	No Preservative
Isotype	IgG2a Kappa
Purity	Protein A purified
Buffer	In 1x PBS, pH 7.4
Product Description	
Host	Mouse
Gene ID	29895
Gene Symbol	MYLPF
Species	Human
Specificity/Sensitivity	Reacts with fast skeletal myosin light chain 2.
Immunogen	MYLPF (AAH12571, 1 a.a. ~ 169 a.a) full-length recombinant protein with GST tag. MW of the GST tag alone is 26 KDa. MAPKRAKRRTVEGGSSSVFSMFDQTQIQEFKEAFTVIDQNRDGIIDKEDLRDTF AAMGRLNVKNEELDAMMKEASGPINFVFLTMFGEKLKGADPEDVITGAFKVL DPEGKGTIKKKFLEELLTTQCDRFSQEEIKNMWAAFPDVGGNVDYKNICYVIT HGDAKDQE
Notes	This product is produced by and distributed for Abnova, a company based in Taiwan.
Product Application Details	
Applications	Western Blot, ELISA, Sandwich ELISA
Recommended Dilutions	Western Blot, ELISA, Sandwich ELISA
Application Notes	This antibody is reactive against recombinant protein in ELISA.

Images

Western Blot: Fast skeletal myosin light chain 2 Antibody (3H3) [H00029895-M05] - Analysis of MYLPF expression in transfected 293T cell line by MYLPF monoclonal antibody (M05), clone 3H3. Lane 1: MYLPF transfected lysate (Predicted MW: 19 KDa). Lane 2: Non-transfected lysate.



Sandwich ELISA: Fast skeletal myosin light chain 2 Antibody (3H3) [H00029895-M05] - Detection limit for recombinant GST tagged MYLPF is 1 ng/ml as a capture antibody.



**Novus Biologicals USA**

10730 E. Briarwood Avenue
Centennial, CO 80112
USA
Phone: 303.730.1950
Toll Free: 1.888.506.6887
Fax: 303.730.1966
nb-customerservice@bio-techne.com

Bio-Techne Canada

21 Canmotor Ave
Toronto, ON M8Z 4E6
Canada
Phone: 905.827.6400
Toll Free: 855.668.8722
Fax: 905.827.6402
canada.inquires@bio-techne.com

Bio-Techne Ltd

19 Barton Lane
Abingdon Science Park
Abingdon, OX14 3NB, United Kingdom
Phone: (44) (0) 1235 529449
Free Phone: 0800 37 34 15
Fax: (44) (0) 1235 533420
info.EMEA@bio-techne.com

General Contact Information

www.novusbio.com
Technical Support: nb-technical@bio-techne.com
Orders: nb-customerservice@bio-techne.com
General: novus@novusbio.com

Products Related to H00029895-M05

HAF007	Goat anti-Mouse IgG Secondary Antibody [HRP]
NB720-B	Rabbit anti-Mouse IgG (H+L) Secondary Antibody [Biotin]
NBP1-96981-0.5mg	Mouse IgG2a Kappa Isotype Control (M2AK)
NBP1-72343-50ug	Recombinant Human Fast skeletal myosin light chain 2 His Protein

Limitations

This product is for research use only and is not approved for use in humans or in clinical diagnosis. Primary Antibodies are guaranteed for 1 year from date of receipt.

For more information on our 100% guarantee, please visit www.novusbio.com/guarantee

Earn gift cards/discounts by submitting a review: www.novusbio.com/reviews/submit/H00029895-M05

Earn gift cards/discounts by submitting a publication using this product:
www.novusbio.com/publications

